

Standard Detail Drawings

General

- G1 Private Right of Way
- G2 Non-residential/Business Private Ways Construction

Roading

- R1 Road Name Sign
- R2 Services Layout Berm Cross Section (urban)
- R3 Design Chart Flexible Pavements
- R4 Vehicle Crossing (urban) Footpath Adjacent to Kerb
- R5 Vehicle Crossing (urban) Footpath Away from Kerb
- R6 Vehicle Crossing (urban) High Speed Turnoff
- R7 Vehicle Crossing Commercial
- R8 Vehicle Crossing (urban) Drainage via Grass Berm
- R9 Vehicle Crossing (urban) Non-standard Berm Slope
- R11 Intersection Sight Distance
- R13 Cul-de-sac Head Dimensions
- R14 Cul-de-sac Head Alternatives
- R16 Typical Dimensions Kerb and Channel
- R17 Typical Catchpit Details
- R19 Recess Catchpit
- R21 Wheelchair Ramp Kerb Crossing
- R29 Standard Rural Property Entrance – Residential
- R31 Private Heavy Vehicle Access
- R32 Sand for Use in Replacement of Undercuts in Road Works

Stormwater

- SW1 Stormwater Catchment Boundaries
- SW2 Design Rainfall DDF Curves
- SW3 Onehunga-Manukau Harbour Datums & Tides
- SW4 Cast in Situ Reinforced Concrete Drainage Structures
- SW5 Precast Manhole Flanged Base up to 4.5m Deep
- SW6 Stormwater Manhole Details Cast In-Situ Base
- SW7 Precast Manhole Cast In-Situ Base for Pipes >600mm
- SW8 Manhole Throat Details
- SW9 PE Pipe Manhole Connections
- SW10 Stormwater Catchment Boundaries
- SW11 Catchpit 1 of 2
- SW11 Catchpit 2 of 2
- SW13 RAMP Riser for Stormwater House Connections
- SW14 Anchor Block Details
- SW15 Pipe Bedding
- SW16 Inlet and Outlet Structures
- SW17 Build Over Influence Zone and Clearances to Manholes
- SW18 Foundation/Pipe Clearances for Building Close to Public Drains
- SW19 Minimum Freeboard Requirements for Building Adjacent to Floodplains
- SW20 Groundwater Recharge Pit for Peat Areas Plan
- SW21 Groundwater Recharge Pit for Peat Areas Cross Section
- SW22 Recharge Pit Feature Dimensions V Impervious Area

Waste Water

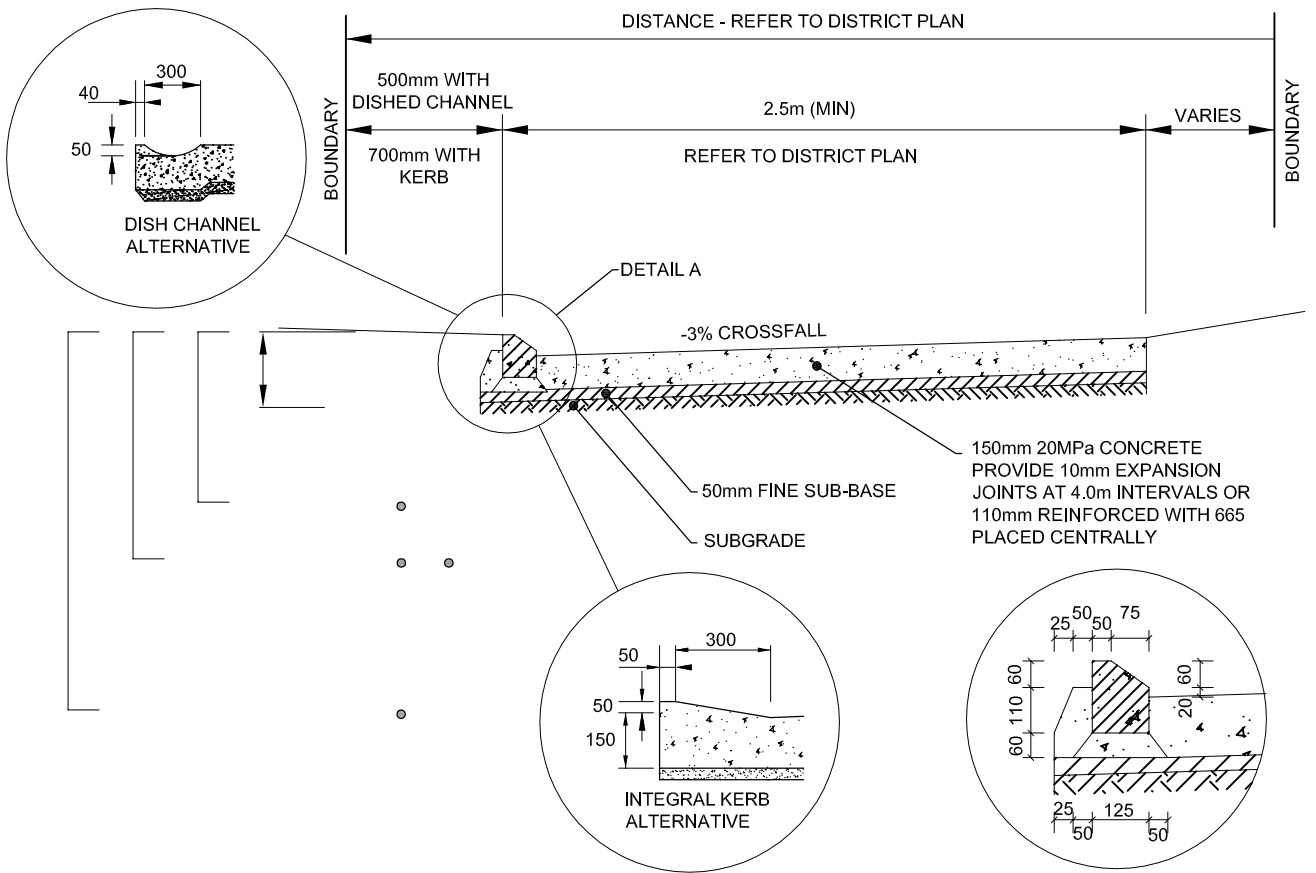
Contact United Water (U.W.I.)

Water

Contact United Water (U.W.I.)

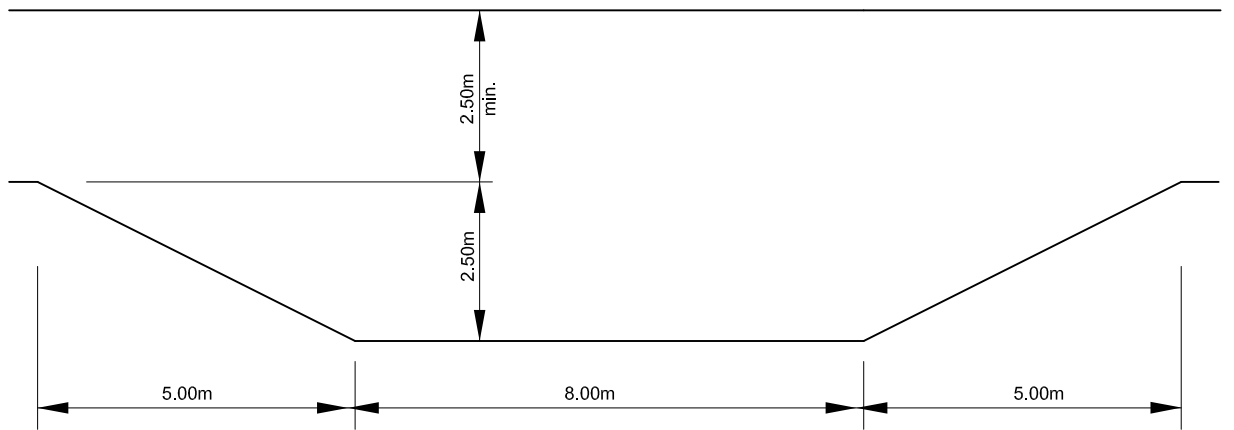
Parks and Reserves

- P1 Pedestrian Accessway Details
- P3 Standard Park Barriers
- P4 Berm Cross-Section for Tree Landscaping
- P5 Street Tree Placement



CROSS SECTION

DETAIL A



PASSING BAY

NOTES:

1. CARRIAGEWAY WIDTHS SHALL BE TO DISTRICT PLAN REQUIREMENTS.
2. CONCRETE CONSTRUCTION SHALL BE AS SPECIFIED IN NZS 3109 AND NZS 3114
3. ALL DIMENSIONS ARE IN mm UNLESS OTHERWISE SPECIFIED.

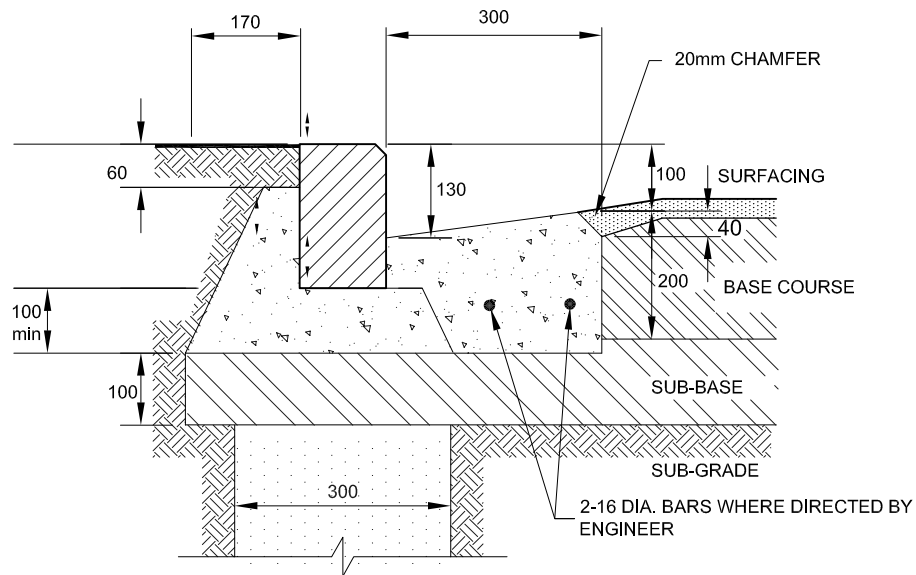
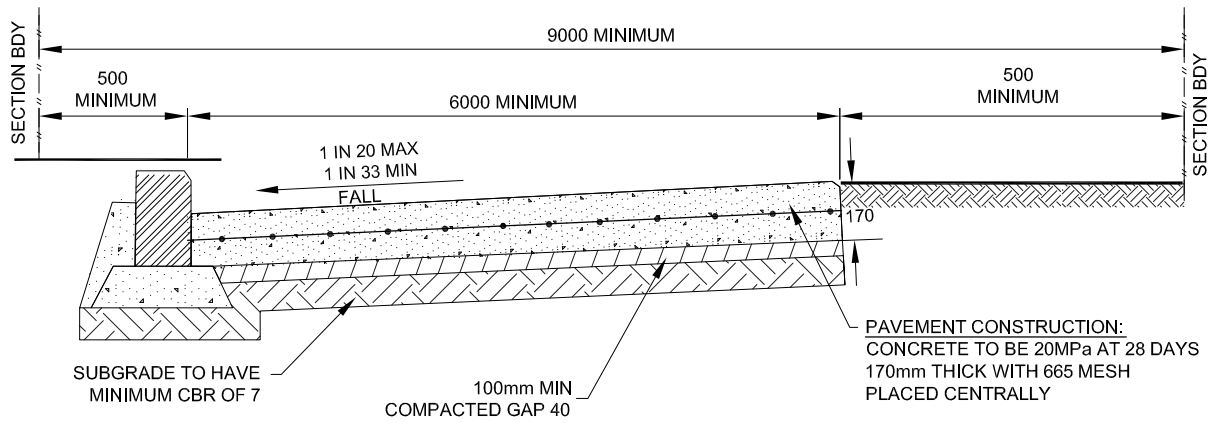


PAPAKURA
DISTRICT COUNCIL

DATE ISSUED: JUNE 2009

DWG NO: G 1

PRIVATE RIGHT OF WAYS



PRECAST KERB

NOTE:

1. ALTERNATIVE PAVEMENT CONSTRUCTION WILL BE PERMITTED SUBJECT TO SPECIFIC DESIGN AND APPROVAL.
2. MAXIMUM GRADE 1 IN 8.
3. TURNING MOVEMENTS, OF AN 8m TRUCK TO BE ACCOMMODATED.
4. BERM TO BE MINIMUM 500mm WIDTH.



PAPAKURA
DISTRICT COUNCIL

DATE ISSUED:

JUNE 2009

DWG NO:

G 2

**NON-RESIDENTIAL/ BUSINESS
PRIVATE WAYS CONSTRUCTION**