

2014 Auckland Region Manual Cycle Monitor

- Regional Summary -





TABLE OF CONTENTS

1. INTRODUCTION	1
1.1 The Need For Reliable Cycle Trip Data	1
1.2 Cycle Monitoring Locations	2
2. REGIONAL SUMMARY OF RESULTS	7
2.1 Aggregated Total	7
2.2 Morning Peak	19
2.3 Evening Peak	31
2.4 Annual Average Daily Traffic (AADT) Estimates	44
2.5 Ferry Wharf Count Summary	51
2.6 School Bike Shed Count Summary	53
2.7 School Scooter Count Summary	70
APPENDIX ONE: METHODOLOGY	1
1. Choice of Sites	1
2. Monitoring Times	1
3. Conducting The Manual Counts	3
4. Data Analysis	5
5. Annual Average Daily Traffic (AADT) Analysis	5
6. School Bike Shed Counts	6
7. Reporting	7

APPENDICES

- Appendix One: Methodology
- Appendix Two: Annual Average Daily Traffic (AADT) Calculation



1. INTRODUCTION

1.1 The Need For Reliable Cycle Trip Data

Monitoring cycle movements and cycle traffic is important to Auckland Transport, to identify where investment may be needed to improve infrastructure for cycling. Cycle traffic data will also help Auckland Transport prioritise future funding through the Auckland Land Transport Programme¹.

This cycle monitoring gives precise cycle traffic information for a number of locations across the region, which can guide investment in infrastructure and other programmes. It also allows Auckland Transport to track progress against a quality baseline over the coming decade.

Manual Cycle Monitoring

Historically, manual cycle monitoring had been carried out in four of the seven Auckland region Territorial Authorities (TAs). However, each monitor had been undertaken using a different methodology² and conducted at different times of the year. This variability prevented the possibility of comparing the relative popularity of different sites across TA boundaries.

Through the Regional Cycle Monitoring Plan, it was proposed that these manual counts be regionally aligned to ensure better regional consistency. Ideally, cycle count monitoring would be carried out at the same time each year across the region, applying a standard methodology.

This report provides a regional summary of the results of manual cycle monitoring conducted at 85 pre-determined sites throughout the Auckland region. Site-by-site results and ward summaries for each of the twelve³ wards in the Auckland region have been provided in separate documents. Readers should refer to these documents for ward and site-level detail.

¹ Auckland Regional Transport Authority (2006) *Regional Cycle Monitoring Plan (Provisional Guidelines)*

² For example, Manukau and North Shore cities' monitors took place at the same morning and evening peak times, while Auckland city's differed by one hour for the evening peak, and Waitakere's differed for both peaks.

³ Note that there were no monitoring sites in the Rodney ward.



1.2 Cycle Monitoring Locations

Eighty-five sites were monitored across the Auckland region in 2014. Note that where sites lie on the border between two wards, they have been included in the reports for both wards. Site numbers (which correspond to the numbering in Figure 1.1) appear in brackets after the site name.

Albany

- Whangaparaoa Road (near Red Beach intersection), Red Beach (59)
- Whangaparaoa Road (near Hibiscus Coast Highway intersection), Silverdale (60)
- D'Oyly Reserve cycleway, Stanmore Bay (61)
- Gulf Harbour Drive/Laurie Southwick Parade, Gulf Harbour (63)
- Hibiscus Coast Highway/Jelas Road (82)
- Behind Auckland Council Building, Centreway Road, Orewa (84)
- Beach/Browns Bay Road, Browns Bay (45)
- Rosedale/East Coast Road, Rosedale (38)
- Upper Harbour/Albany Highway, Greenhithe (39)
- Oteha Valley Road/SH17/Albany Highway, Oteha (40)
- Rosedale/Bush Road, Albany (46)
- Oteha Valley/East Coast Road, Northcross (47)
- Squadron Drive/Buckley Avenue, Greenhithe (70)
- Luckens/Hobsonville Road, West Harbour (51)
- Sunnynook Road/East Coast Road, Sunnynook (89)

North Shore

- Lake Road by Takapuna Grammar, Takapuna (35)
- Hurstmere Road/Killarney Street, Takapuna (36)
- Taharoto/Northcote Road, Northcote (37)
- Wairau/Glenfield Road, Glenfield (41)
- Shakespeare/East Coast Road, Milford (42)
- Glenfield/Coronation Road, Hillcrest (43)
- Birkenhead Ave/Mokoia Road, Birkenhead (44)
- Sunnynook Road/East Coast Road, Sunnynook (89)



Waitakere

- Henderson Creek, Henderson (48)
- Triangle Road/Don Buck Road, Massey (49)
- Lincoln Road/Fairdene Ave, Henderson (50)
- Luckens/Hobsonville Road, West Harbour (51)
- Central Park Drive, Henderson (52)
- 326 Te Atatu Road, Te Atatu (53)
- Te Atatu Road/Elcoat Eve, Te Atatu (54)
- Swanson Road/Ranui Station Road/Armada Drive, Ranui (55)
- West Coast/Rosier Road, Glen Eden (57)
- North Western Cycleway (near Te Atatu off-ramp), Te Atatu (58)
- Te Atatu Road/Old Te Atatu Road, Te Atatu (72)
- Rathgar/Pomaria Road, Henderson (85)
- Triangle Road/Huruhuru Road, Henderson (87)

Waitemata and Gulf

- Victoria Street/Wellesley Street, CBD (1)
- Ponsonby/Karangahape/Newton/Great North Road, Newton (2)
- Symonds/Karangahape/Grafton Road, Grafton (8)
- Karangahape Road/Queen Street, CBD (9)
- Tamaki Drive/The Strand, Mechanics Bay (10)
- Auckland Ferry Terminal, CBD (22)
- Stanley Street/Grafton Road/Wellesley Street East, CBD (75)
- Ian McKinnon Drive/Newton Road, Eden Terrace (13)
- Jervis Road/Wallace Street/Kelmarna Ave, Herne Bay (16)
- Broadway/Khyber Pass, Newmarket (90)

Albert-Eden–Roskill

- Great North/Carrington/Point Chevalier Road, Point Chevalier (3)
- Dominion/Balmoral Road, Balmoral (5)
- North Western Cycleway/Great North Road, Waterview (6)
- North Western Cycleway/St Lukes Road, St Lukes (7)
- Manukau Road/Greenlane West, Epsom (12)
- Mount Albert/New North Road, Mt Albert (14)
- Keith Hay Park, Sandringham (88)
- Great South Road/Campbell Road/Main Highway, Ellerslie (21)
- Blockhouse Bay Road/Great North Road, Avondale (73)



- Richardson Road/Maioro Street, New Windsor (15)
- Broadway/Khyber Pass Road, Newmarket (90)
- Upper Dominion Road, Eden Terrace (92)

Whau

- 3 Rankin Ave, New Lynn (56)
- Blockhouse Bay Road/Great North Road, Avondale (73)
- Patiki/Rosebank Road, Avondale (4)
- Richardson Road/Maioro Street, New Windsor (15)

Orakei

- St Heliers Bay/West Tamaki Road, Glendowie (20)
- Remuera/Orakei Road, Remuera (11)
- Orakei Basin Boardwalk, Orakei (91)

Maungakiekie-Tamaki

- Ellerslie Panmure Highway/Lunn Ave, Panmure (19)
- Great South Road/Campbell Road/Main Highway, Ellerslie (21)
- Apirana Avenue/Pilkington Road/Tripoli Road, Glen Innes (74)
- Waikaraka Cycleway, Onehunga (76)
- Onehunga Harbour Road, Onehunga (17)
- Lagoon Drive/Church Crescent, Panmure (78)
- St Heliers Bay/West Tamaki Road, Glendowie (20)

Howick

- Bucklands Beach/Pakuranga Road, Howick (33)
- Te Irirangi/Ti Rakau Drive, Botany (34)
- Pakuranga Road/Ti Rakau Drive, Pakuranga (80)
- Harris/Smales Road, East Tamaki (79)
- Te Irirangi Drive/Ormiston Road, Flat Bush (81)



Manukau

- Great South/Bairds Road, Papatoetoe (23)
- Great South Road/Te Irirangi Drive/Cavendish Drive, Manukau (24)
- Massey/Buckland Road, Mangere (28)
- Te Irirangi Drive/Ormiston Road, Flat Bush (81)
- Tom Pearce/George Bolt Memorial Drive, Mangere (25)
- Great South/East Tamaki Road, Papatoetoe (30)
- Wyllie Avenue/Puhinui Road, Papatoetoe (31)
- McKenzie/Coronation/Walmsley Road, Mangere (32)
- Highbrook Drive, Highbrook (71)
- Great South Road/High Street/Atkinson Avenue, Otahuhu (18)

Manurewa-Papakura

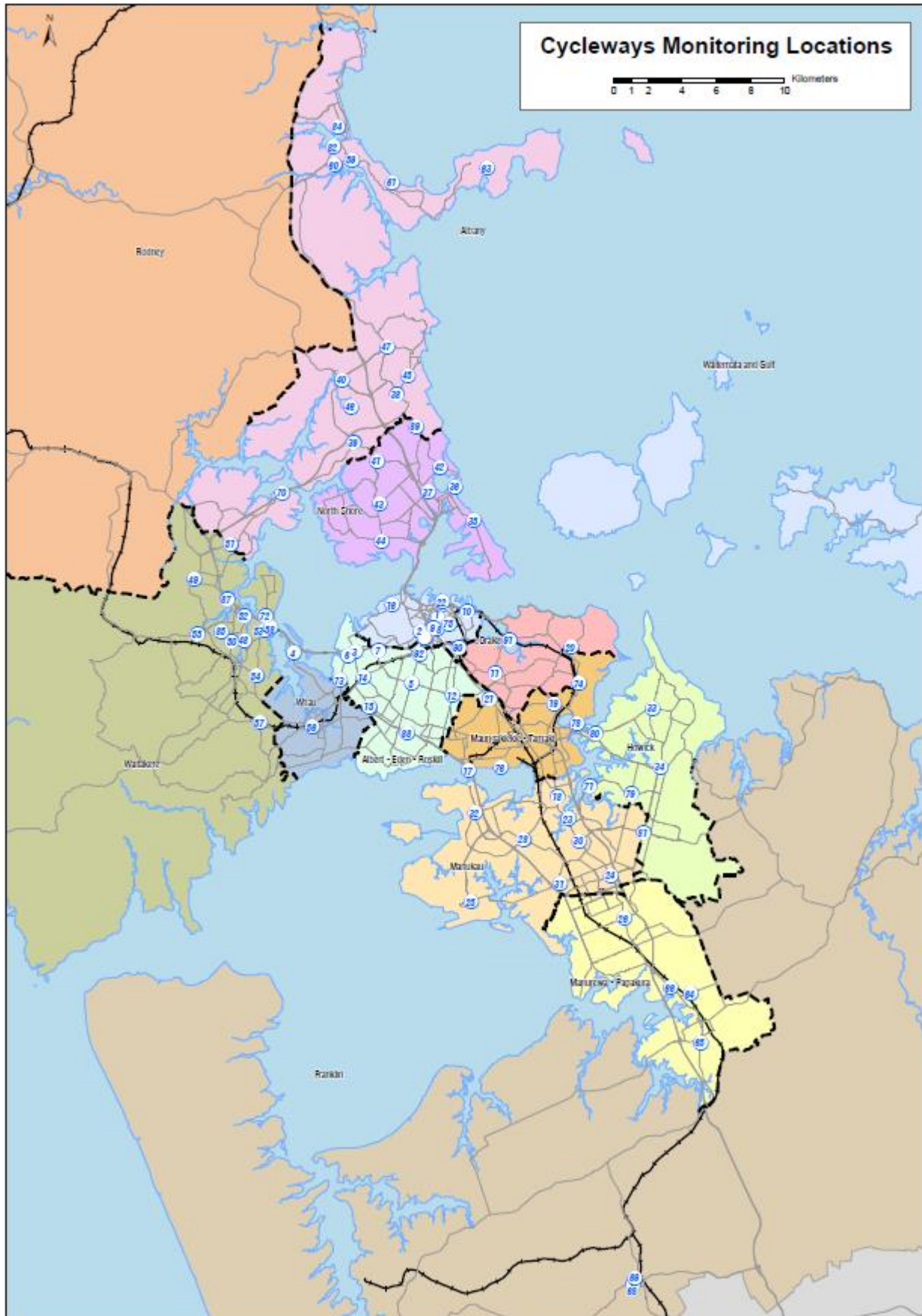
- Great South Road/Taka Street, Takanini (66)
- Porchester Road/Walters Road, Takanini (64)
- Great South Road/Rosehill Drive, Papakura (65)
- Great South/Browns/Orams Road, Manurewa (26)

Franklin

- Queen/Harris Street, Pukekohe (68)
- Edinburgh/Tobin Street, Pukekohe (69)

Note that there are no cycle monitoring sites in the Rodney ward.

Figure 1.1: 2014 Cycle Monitoring Locations in the Auckland Region





2. REGIONAL SUMMARY OF RESULTS

2.1 Aggregated Total

Total Movements

- Overall, a total of 12,877 cyclist movements⁴ were recorded across the 85 sites monitored in 2014. This figure represents a **13 per cent decrease** when compared with 2013 (14,864 movements).
- Across the 60 sites monitored since the manual cycle monitor began in 2007, cyclist movements have **increased by 19 per cent** compared to 2014.
- Of the sites monitored in both 2013 and 2014, the average number of cycle movements in the region across the morning and evening periods has decreased (151 per site in 2014, compared with 175 per site in 2013 - a decrease of 13 per cent). However, these figures mask variation between wards. For example, Albert-Eden-Roskill has experienced an increase in average total cycle movements (up 8 per cent), while Waitakere has experienced the most notable decline in average total cycle movements (down by 38 per cent) since 2013 (Figures 2.2).

⁴ It is important to note that this figure represents individual cyclist movements rather than total cyclist numbers. Due to the close proximity of sites to one another (particularly in the Auckland CBD), it is possible for the same cyclist to be counted at more than one site. It is also possible to 'double count' cyclists if they use the same intersection more than once during a shift. At the same time, there will be many cycle trips that will not be counted at all by this methodology, if a cyclist's route does not pass through a monitoring location. Because of these limitations, it cannot be said that 12,877 different cyclists were counted on the Auckland region's roads using these sites; the actual number of cyclists, and the number of cycle trips they take, may be higher or lower than the number of cycle movements counted through this methodology.



**Table 2.1: Total Cyclist Movements in the Auckland Region
2007-2014**

<i>Locations</i>	<i>2007</i>	<i>2008</i>	<i>2009</i>	<i>2010</i>	<i>2011</i>	<i>2012</i>	<i>2013</i>	<i>2014</i>	<i>Change 13-14</i>	<i>Change 07-14</i>
Total (60 sites since 2007)	8417	8783	8427	10659	10917	10275	11405	10004	-12%	19%
<i>Annual change</i>	4%	-4%	26%	2%	-6%	11%	-12%			
Total (67 sites since 2008)	-	9255	8965	11336	11517	10949	12130	10598	-13%	-
<i>Annual change</i>		-3%	26%	2%	-5%	11%	-13%			
Total (78 sites in 2009)	-	-	9969	12646	12970	12215	13587	11850	-13%	-
<i>Annual change</i>			27%	3%	-6%	11%	-13%			
Total (80 sites in 2010)	-	-	-	12836	13160	12439	13799	11929	-14%	-
<i>Annual change</i>				3%	-5%	11%	-14%			
Total (82 sites in 2011)	-	-	-	-	13406	12638	13991	12071	-14%	-
<i>Annual change</i>					-6%	11%	-14%			
Total (83 sites in 2012)	-	-	-	-	-	13215	14628	12594	-14%	-
<i>Annual change</i>						11%	-14%			
Total (85 sites since 2013)	-	-	-	-	-	-	14864	12877	-13%	-
<i>Annual change</i>							-13%			



Figure 2.1: Average and Range of Total Cyclist Movements by Ward in 2014 (All 85 Sites)

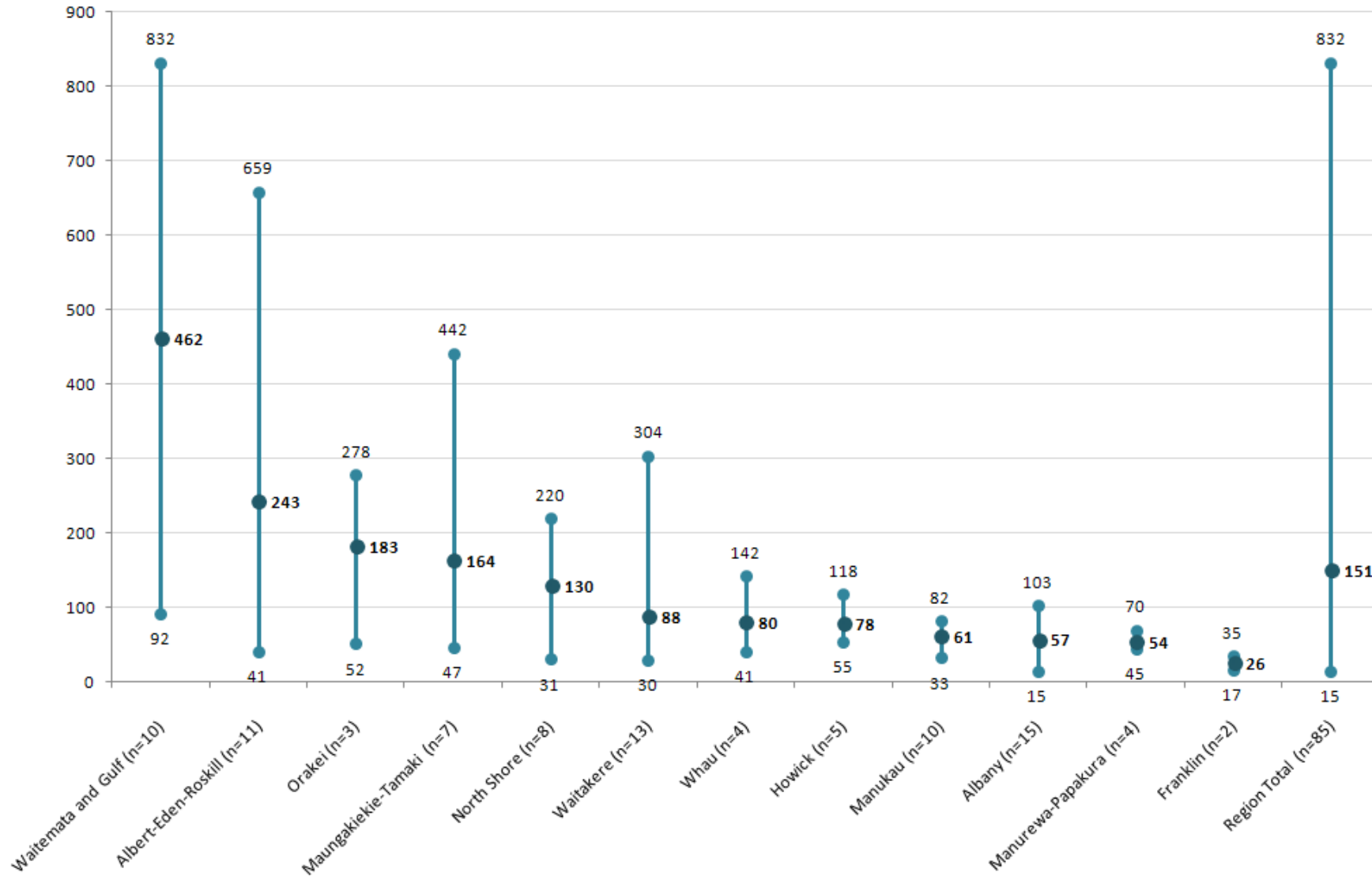
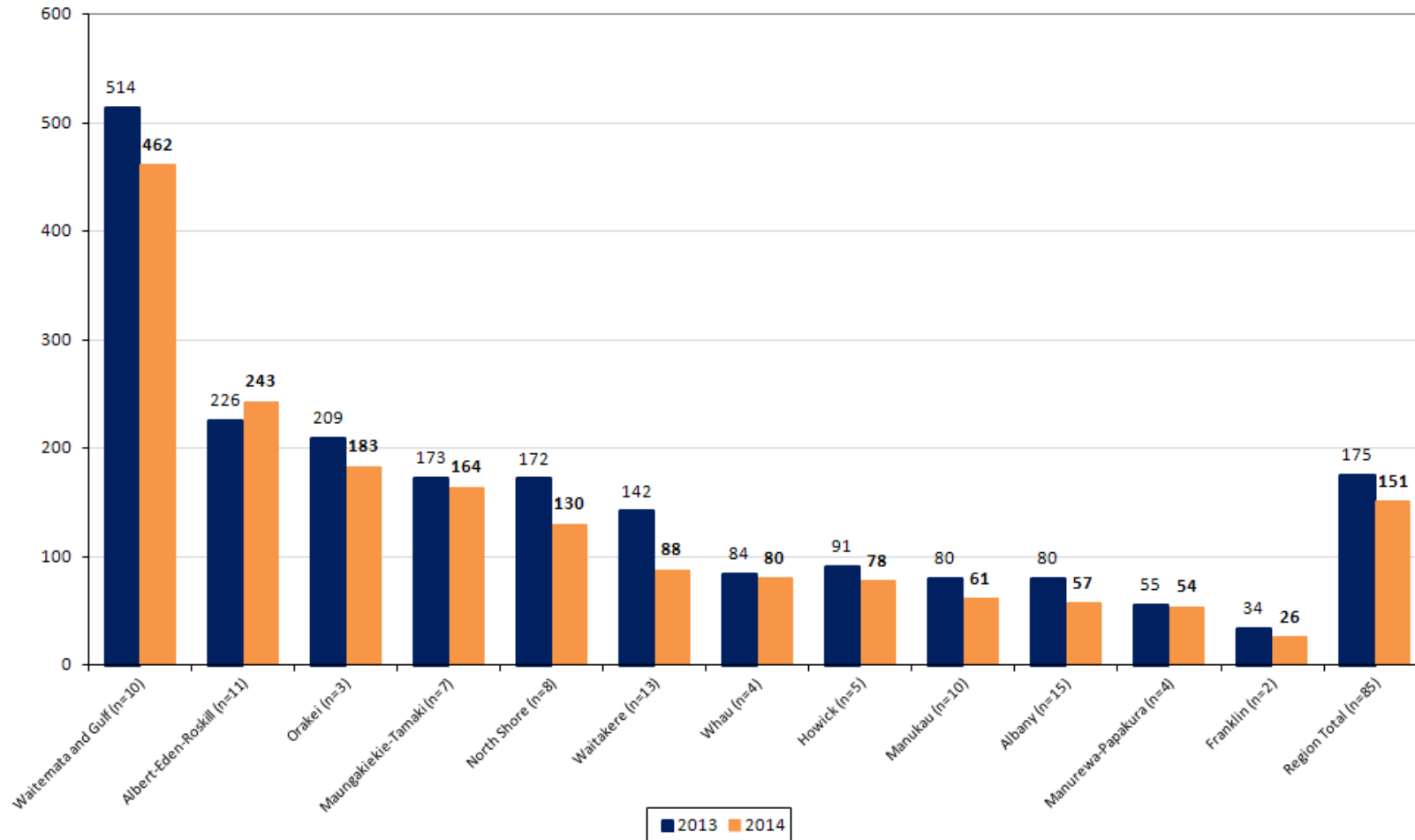


Figure 2.2: Average Cyclist Movements by Ward - 2013-2014 (n)



Note: To allow for accurate time series comparisons, in 2013, average site calculations for Albert-Eden-Roskill and Orakei wards excluded Upper Dominion Road and Orakei Basin Boardwalk, which were monitored for the first time in 2013. For direct comparisons with 2014 results, these sites have been included in the 2013 date presented here (that is, results for 2013 presented in this report may differ slightly from those presented in Figure 2.2 of the 2013 Regional Summary for Albert-Eden-Roskill and Orakei wards).



- Of the 85 sites monitored in Auckland this year, the busiest was the Symonds Street/Karangahape Road intersection in Waitemata and Gulf with a total of 832 movements (down from 902 movements last year).
- In contrast, Whangaparaoa Road, near Hibiscus Coast Highway intersection, Albany ward had the lightest cyclist traffic (15 movements, down from 19 movements last year).
- The majority of the sites (62 of the 85 sites monitored in 2013 and 2014; 73 per cent) have recorded smaller cycle volumes than last year. The most noticeable decreases were at:
 - Luckens/Hobsonville Road (Albany/Waitakere ward) – down from 104 to 41 movements (61 per cent);
 - Triangle/Huruhuru Road (Waitakere ward) – down from 153 to 66 movements (57 per cent);
 - Lincoln Road/Fairdene Avenue (Waitakere ward) – down from 68 to 30 movements (56 per cent);
 - Central Park Drive (Waitakere ward) – down from 273 to 125 movements (54 per cent); and
 - Triangle Road/Don Buck Road (Waitakere ward) – down from 87 to 40 movements (54 per cent).
- Twenty-two per cent of the sites (19 out of the 85 sites monitored in 2013 and 2014) have recorded increases in total cyclist numbers over the last 12 months. The most noticeable increases occurred at:
 - Orakei Basin Boardwalk (Orakei ward) – up from 32 to 52 movements (63 per cent); and
 - Great South/Browns/Orams Road (Manurewa-Papakura ward) – up from 49 to 70 movements (43 per cent).



**Table 2.2: Summary Of Total Cyclist Movements
2007-2014 (n) – 6:30am to 9:00am and 4:00pm to 7:00pm**

Site No.	Location	Area	2007	2008	2009	2010	2011	2012	2013	2014	Change 13-14	Change 07-14
8	Symonds Street/Karangahape Road	Waitemata and Gulf	639	621	528	597	690	732	902	832	-8%	30%
10	Tamaki Drive/The Strand	Waitemata and Gulf	900	786	603	936	1059	944	921	799	-13%	-11%
7	North Western Cycleway/St Lukes	Albert-Eden-Roskill	324	331	310	432	513	429	547	659	20%	103%
9	Karangahape Road/Queen Street	Waitemata and Gulf	507	424	459	582	554	573	654	613	-6%	21%
2	Ponsonby/Karangahape Road	Waitemata and Gulf	487	415	370	559	511	498	595	558	-6%	15%
6	North Western Cycleway/Great North Road	Albert-Eden-Roskill	232	369	286	485	486	405	519	542	4%	134%
90	Broadway/Khyber Pass	Waitemata and Gulf	-	-	-	-	-	577	637	523	-18%	-
13	Ian McKinnon/Newton Road	Waitemata and Gulf	-	-	291	374	560	503	582	496	-15%	-
17	Onehunga Harbour Road	Maungakiekie-Tamaki	249	220	180	257	310	323	426	442	4%	77%
22	Ferry Terminal	Waitemata and Gulf	380	316	248	395	391	389	417	355	-15%	-7%
58	North Western Cycleway/near Te Atatu Road off-ramp	Waitakere	232	272	355	388	345	425	454	304	-33%	31%
11	Remuera/Orakei Road	Orakei	195	189	187	244	280	213	348	278	-20%	43%
5	Dominion/Balmoral Road	Albert-Eden-Roskill	237	201	183	205	197	188	235	235	0%	-1%
92	Upper Dominion Road	Albert-Eden-Roskill	-	-	-	-	-	-	204	231	13%	-
3	Great North/Carrington Road	Albert-Eden-Roskill	235	231	193	314	232	206	228	227	- <1%	-3%
1	Victoria/Wellesley/Halsey Street	Waitemata and Gulf	160	136	124	162	225	192	176	224	27%	40%
35	Lake Road, by Takapuna Grammar	North Shore	192	297	295	327	316	321	266	220	-17%	15%
20	St Heliers Bay/West Tamaki Road	Maungakiekie-Tamaki/Orakei	208	167	108	170	224	135	248	219	-12%	5%
12	Manukau Road/Greenlane West	Albert-Eden-Roskill	225	205	176	257	227	205	199	217	9%	-4%
42	Shakespeare/East Coast Road	North Shore	137	250	310	305	286	238	266	194	-27%	42%
36	Hurstmere Road/Killarney Street	North Shore	121	252	318	302	304	262	271	192	-29%	59%



Site No.	Location	Area	2007	2008	2009	2010	2011	2012	2013	2014	Change 13-14	Change 07-14
37	Taharoto/Northcote Road	North Shore	162	270	202	229	307	218	234	170	-27%	5%
14	Mount Albert/New North Road	Albert-Eden-Roskill	156	164	142	209	201	170	170	169	-1%	8%
78	Lagoon Drive/Church Crescent	Maungakiekie-Tamaki	-	-	129	195	163	137	182	155	-15%	-
21	Great South Road/Campbell Road/Main Highway	Albert-Eden-Roskill/Maungakiekie-Tamaki	174	114	151	171	138	132	146	149	2%	-14%
73	Blockhouse Bay/Great North Road	Albert-Eden-Roskill/Whau	-	117	119	141	129	129	141	142	1%	-
16	Jervois Road/Wallace Street	Waitemata and Gulf	-	-	111	167	148	141	136	132	-3%	-
72	Te Atatu/Old Te Atatu Road/Tatau Way	Waitakere	-	111	134	207	141	193	192	126	-34%	-
52	Central Park Drive	Waitakere	127	157	212	200	212	246	273	125	-54%	-2%
53	326 Te Atatu Road, near Covil Avenue	Waitakere	87	107	138	127	127	135	153	124	-19%	43%
80	Pakuranga Road/Ti Rakau Drive	Howick	-	-	123	162	124	127	134	118	-12%	-
47	Oteha Valley/East Coast Road	Albany	59	114	138	168	129	137	106	103	-3%	75%
89	Sunnynook/East Coast Road	Albany/North Shore	-	-	-	-	174	155	149	97	-35%	-
75	Stanley Street/Grafton Road	Waitemata and Gulf	-	65	96	93	74	94	117	92	-21%	-
4	Patiki/Rosebank Road	Whau	82	79	72	90	121	95	105	91	-13%	11%
33	Bucklands Beach/Pakuranga Road	Howick	140	130	94	114	107	85	71	90	27%	-36%
48	Henderson Creek	Waitakere	46	30	73	84	66	116	86	87	1%	89%
38	Rosedale/East Coast Road	Albany	76	98	159	152	143	118	112	85	-24%	12%
32	McKenzie/Coronation/Walmsley Road	Manukau	70	57	52	87	93	48	90	82	-9%	17%
55	Swanson/Ranui Station Road/Armada Drive	Waitakere	62	86	103	102	132	115	116	81	-30%	31%
46	Rosedale/Bush Road	Albany	31	73	72	109	85	63	100	80	-20%	158%
41	Wairau/Glenfield Road	North Shore	64	73	80	91	93	105	69	79	14%	23%
39	Upper Harbour/Albany Highway	Albany	25	98	138	158	148	187	134	75	-44%	200%



Site No.	Location	Area	2007	2008	2009	2010	2011	2012	2013	2014	Change 13-14	Change 07-14
84	Behind Auckland Council Building, Orewa	Albany	-	-	86	95	138	89	89	75	-16%	-
76	Waikaraka Cycle Way	Maungakiekie-Tamaki	-	54	51	42	65	52	83	73	-12%	-
24	Great South Road/Te Irirangi Drive/Cavendish Drive	Manukau	73	51	41	72	94	78	119	72	-39%	-1%
30	Great South/East Tamaki Road	Manukau	73	51	63	65	89	86	96	72	-25%	-1%
45	Beach/Browns Bay Road	Albany	19	45	59	77	75	61	60	70	17%	268%
26	Great South/Browns/Orams Road	Manurewa-Papakura	60	55	39	58	70	44	49	70	43%	17%
87	Triangle/Huruhuru Road	Waitakere	-	-	-	137	121	177	153	66	-57%	-
19	Ellerslie Panmure Highway/Lunn Ave	Maungakiekie-Tamaki	118	94	82	100	77	79	94	66	-30%	-44%
70	Squadron Drive/Buckley Avenue*	Albany	-	35	68	94	83	110	106	65	-39%	-
79	Harris/Smales Road	Howick	-	-	60	62	75	44	57	64	12%	-
81	Te Irirangi Drive/Ormiston Road	Howick/Manukau	-	-	33	66	56	50	85	61	-28%	-
18	Great South Road/High Street/Atkinson/Park Avenue	Manukau	84	60	49	61	71	75	79	61	-23%	-27%
23	Great South/Bairds Road	Manukau	68	56	57	71	89	81	103	60	-42%	-12%
31	Wyllie Avenue/Puhinui Road	Manukau	38	33	35	57	75	47	95	60	-37%	58%
40	Oteha Valley Road/SH17/Albany Highway	Albany	19	48	72	91	82	128	85	60	-29%	216%
88	Keith Hay Park	Albert-Eden-Roskill	-	-	-	53	69	47	59	58	-2%	-
43	Glenfield/Coronation Road	North Shore	28	75	78	93	52	73	58	58	0%	107%
28	Massey/Buckland Road	Manukau	43	31	39	45	53	48	58	58	0%	35%
34	Te Irirangi Drive/Ti Rakau Drive	Howick	81	75	59	78	76	86	107	55	-49%	-32%
85	Rathgar/Pomaria Road	Waitakere	-	-	85	99	68	73	68	55	-19%	-
91	Orakei Basin Boardwalk	Orakei	-	-	-	-	-	-	32	52	63%	-
65	Great South Road/Rosehill Drive	Manurewa-Papakura	53	72	59	62	73	57	71	51	-28%	-4%
66	Great South Road/Taka Street	Manurewa-Papakura	58	58	36	43	60	49	55	51	-7%	-12%



Site No.	Location	Area	2007	2008	2009	2010	2011	2012	2013	2014	Change 13-14	Change 07-14
71	Highbrook Drive	Manukau	-	29	38	40	53	50	47	49	4%	-
56	3 Rankin Avenue	Whau	31	38	38	32	42	38	40	47	18%	52%
74	Apirana Avenue/Pilkington/Tripoli Road	Maungakiekie-Tamaki	-	61	32	60	55	46	39	47	21%	-
64	Porchester Road/Walters Road	Manurewa-Papakura	50	46	49	-	72	44	43	45	5%	-10%
51	Luckens/Hobsonville Road	Albany/Waitakere	32	41	77	95	52	112	104	41	-61%	28%
15	Richardson Road/Maioro Street	Albert-Eden-Roskill/Whau	-	-	21	39	37	53	48	41	-15%	-
49	Triangle Road/Don Buck Road	Waitakere	67	61	56	90	88	83	87	40	-54%	-40%
68	Queen/Harris Street	Franklin	101	83	95	57	67	44	47	35	-26%	-65%
54	Te Atatu Road/Elcoat Avenue	Waitakere	50	45	69	52	48	57	44	35	-20%	-30%
57	West Coast/Rosier Road	Waitakere	48	37	62	60	60	38	56	33	-41%	-31%
25	Tom Pearce/George Bolt Memorial Drive	Manukau	-	-	27	12	54	15	33	33	0%	-
44	Birkenhead Ave/Mokoia Road	North Shore	40	49	57	75	45	52	61	31	-49%	-23%
50	Lincoln Road/Fairdene Avenue	Waitakere	40	55	43	56	54	67	68	30	-56%	-25%
63	Gulf Harbour Drive/Laurie Southwick Parade	Albany	56	44	22	37	39	33	40	29	-28%	-48%
61	D'Oyly Reserve cycleway	Albany	24	103	9	44	58	35	27	24	-11%	0%
82	Hibiscus Coast Highway/Jelas Road	Albany	-	-	38	39	30	34	43	22	-49%	-
59	Whangaparaoa Road, near Red Beach Intersection	Albany	29	31	26	29	26	28	25	18	-28%	-38%
69	Edinburgh/Tobin Street	Franklin	35	40	34	28	28	28	21	17	-19%	-51%
60	Whangaparaoa Road, near Hibiscus Coast Highway intersection	Albany	28	20	12	23	22	20	19	15	-21%	-46%
	Total (60 sites since 2007)^		8417	8783	8427	10659	10917	10275	11405	10004	-12%	19%
	Total (67 sites since 2008)^		-	9255	8965	11336	11517	10949	12130	10598	-13%	-
	Total (78 sites in 2009)		-	-	9969	12646	12970	12215	13587	11850	-13%	-



Site No.	Location	Area	2007	2008	2009	2010	2011	2012	2013	2014	Change 13-14	Change 07-14
	Total (80 sites in 2010)		-	-	-	12836	13160	12439	13799	11929	-14%	-
	Total (82 sites in 2011)		-	-	-	-	13406	12638	13991	12071	-14%	-
	Total (83 sites in 2012)		-	-	-	-	-	13215	14628	12594	-14%	-
	Total (85 sites since 2013)		-	-	-	-	-	-	14864	12877	-13%	-

^Note that the evening count for D'Oyly Reserve cycleway (site 61) in 2008 is considered as an outlier, so the total figures exclude this outlier for more accurate comparison.

**Note that the Squadron Drive/Buckley Avenue (site 70) is the relocated site from previous Upper Harbour Drive/Buckley Avenue, so previous results are not directly comparable.*



- Overall, 92 per cent of cyclists in the Auckland region were adults in 2014 (unchanged from 2013). Of the 12 wards monitored, the Waitemata and Gulf ward had the highest proportion of adult cyclists (99 per cent) whilst the Manurewa-Papakura ward had the greatest share of cyclists identified as school children (29 per cent).
- Almost all cyclists were wearing a helmet (92 per cent, unchanged from last year). The Orakei ward had the highest proportion of cyclists who are wearing a helmet (98 per cent) whilst the Manurewa-Papakura ward had the greatest share of cyclists who did not wearing helmets (30 per cent).
- Eighty-one per cent of all cyclists observed in the Auckland region throughout the monitoring period were male and 17 per cent were female (both shares stable from last year). The Manuaku ward had the highest proportion of male cyclists (91 per cent), while the North Shore ward had the greatest share of female cyclists (20 per cent).
- More than half of the cyclists were riding on the road (57 per cent, down slightly from 60 per cent last year). The other cyclists either rode on an off-road cycleway or on the footpath (22 per cent and 20 per cent respectively, stable from last year). Orakei ward continued to have the highest share of cyclists riding on the road (83 per cent, down slightly from 87 per cent last year), while Albert-Eden-Roskill ward had the greatest share of cyclists using an off-road cycleway (39 per cent, stable from 37 per cent in 2013). Franklin ward had the highest proportion of footpath riders (54 per cent, down from 60 per cent 12 months ago).



Table 2.3: Aggregate Totals of Cyclist Characteristics 2007-2014 (%)

	<i>Aggregate Total (2007)</i>	<i>Aggregate Total (2008)</i>	<i>Aggregate Total (2009)</i>	<i>Aggregate Total (2010)</i>	<i>Aggregate Total (2011)</i>	<i>Aggregate Total (2012)</i>	<i>Aggregate Total (2013)</i>	<i>Aggregate Total (2014)</i>
Cyclist Type								
Adult	89	87	88	89	90	90	92	92
School child	11	13	12	11	10	10	8	8
Helmet Wearing								
Helmet on head	90	90	91	91	91	91	92	92
No helmet	10	10	9	9	9	9	8	8
Gender								
Male	-	-	-	-	79	82	83	81
Female	-	-	-	-	16	15	15	17
Can't tell	-	-	-	-	5	3	2	2
Where Riding								
Road	68	72	61	62	61	61	60	57
Footpath	21	21	25	25	21	18	20	20
Off-road cycleway	10	7	14	13	18	21	20	22
Don't know	0	0	0	0	0	0	0	1
Base:	8417	9255	9969	12836	13406	13215	14864	12877



Table 2.4: Summary of Cyclist Characteristics by Ward in 2014

	<i>Albany</i>	<i>North Shore</i>	<i>Wai-takere</i>	<i>Waite-mata and Gulf</i>	<i>Albert/Eden/Roskill</i>	<i>Whau</i>	<i>Orakei</i>	<i>Maungakiekie-Tamaki</i>	<i>Howick</i>	<i>Manukau</i>	<i>Manurewa-Papakura</i>	<i>Franklin</i>
Cyclist Type												
Adult	79	80	83	99	94	96	94	93	84	92	71	73
School child	21	20	17	1	6	4	6	7	16	8	29	27
Helmet Wearing												
Helmet on head	93	95	88	94	95	89	98	94	88	80	70	81
No helmet	7	5	12	6	5	11	2	6	11	19	30	19
Can't tell	0	0	0	0	0	0	0	0	1	1	0	0
Gender												
Male	80	79	87	79	83	88	80	84	85	91	79	85
Female	19	20	12	19	16	12	19	15	10	8	19	9
Can't tell	1	1	1	2	1	0	1	1	5	1	2	6
Where Riding												
Road	63	73	25	73	45	63	83	70	65	58	52	44
Footpath	22	25	38	14	16	25	7	20	35	35	46	54
Off-road cycleway	15	2	37	12	39	12	10	10	0	7	2	0
Can't tell	0	0	0	1	0	0	0	0	0	0	0	2
Base:	859	1041	1147	4624	2670	321	549	1151	388	608	217	52

Note: Orange highlighting denotes the ward with the highest proportion of a particular characteristic when compared to the other wards. Also, base sizes add to more than total number of cycle movements as sites on ward boundaries have been included in both wards.



2.2 Morning Peak

Key Points

- A total of 6,150⁵ morning cyclist movements were recorded across the 85 sites monitored in 2014. This represents a **17 per cent decrease** from 2013 (7,452 movements).
- As shown in Figure 2.3, the average volume of morning cyclists across all 85 sites in the Auckland region is 72 cycle movements. Of the 12 wards, the average number of morning cyclists is highest in the Waitemata and Gulf ward (227 movements) and lowest in Franklin ward (10 movements).
- Of the sites monitored in 2013 and 2014, Figure 2.4 compares the average morning cycle volume of each ward over the last 12 months. All but two wards recorded lower averages, most noticeable at North Shore and Waitakere. Albert-Eden-Roskill had a slight increase this year, while Whau recorded no change in the average morning cycle volume.

⁵ It is important to note that this figure represents individual cyclist movements rather than total cyclist numbers. Due to the close proximity of sites to one another (particularly in Auckland City's CBD), it is possible for the same cyclist to be counted at more than one site. It is also possible to 'double count' cyclists if they use the same intersection more than once during a shift. At the same time, there will be many cycle trips that were not counted at all by this methodology, if a cyclist's route does not pass through a monitoring location. Because of these limitations, it cannot be said that 6,150 different cyclists were counted on the Auckland region's roads using these sites; the actual number of cyclists, and the number of cycle trips they take, may be higher or lower than the number of cycle movements counted through this methodology.



Figure 2.3: Average and Range of Morning Cyclist Movements by Ward in 2014 (All 85 Sites)

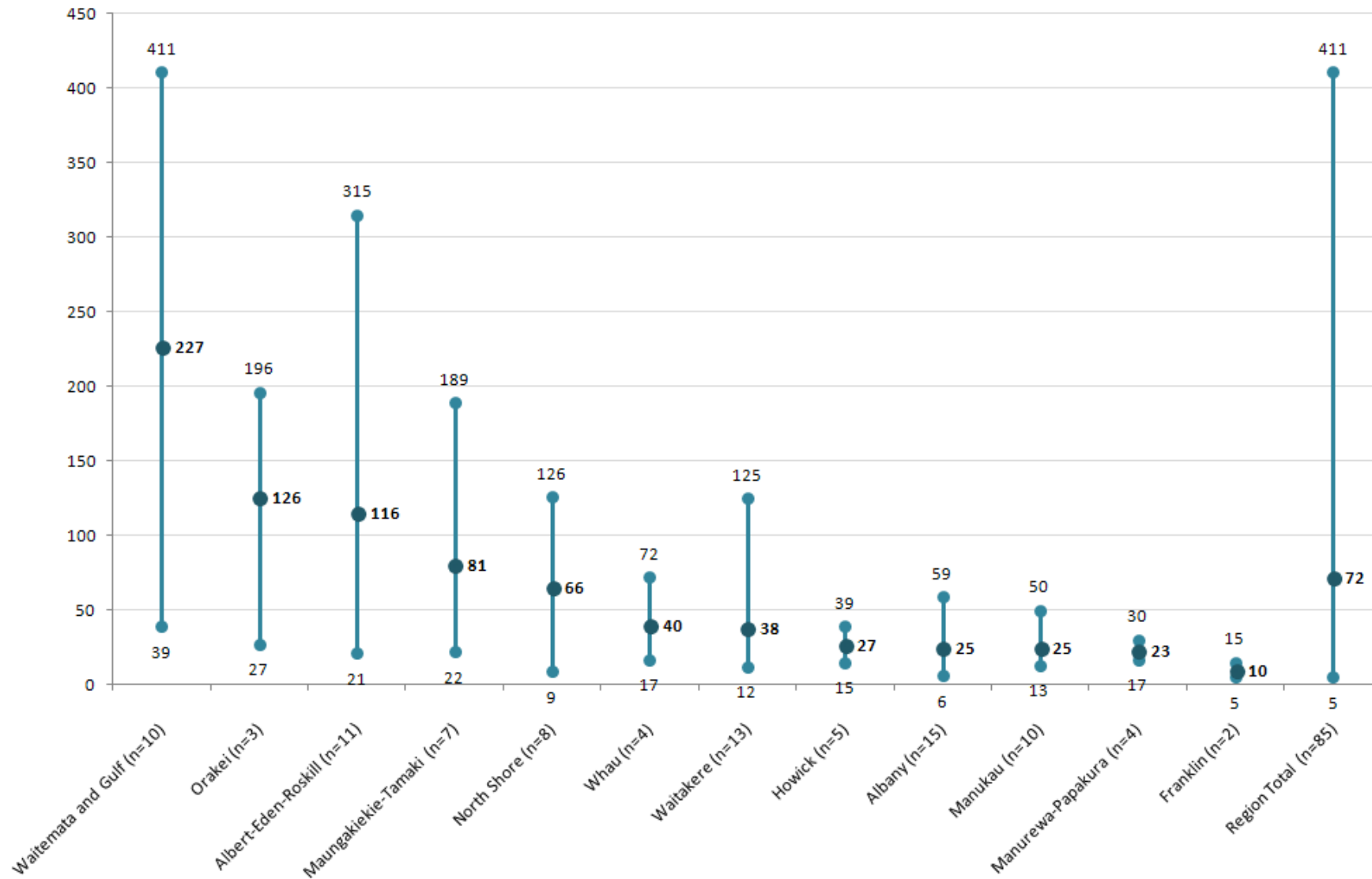
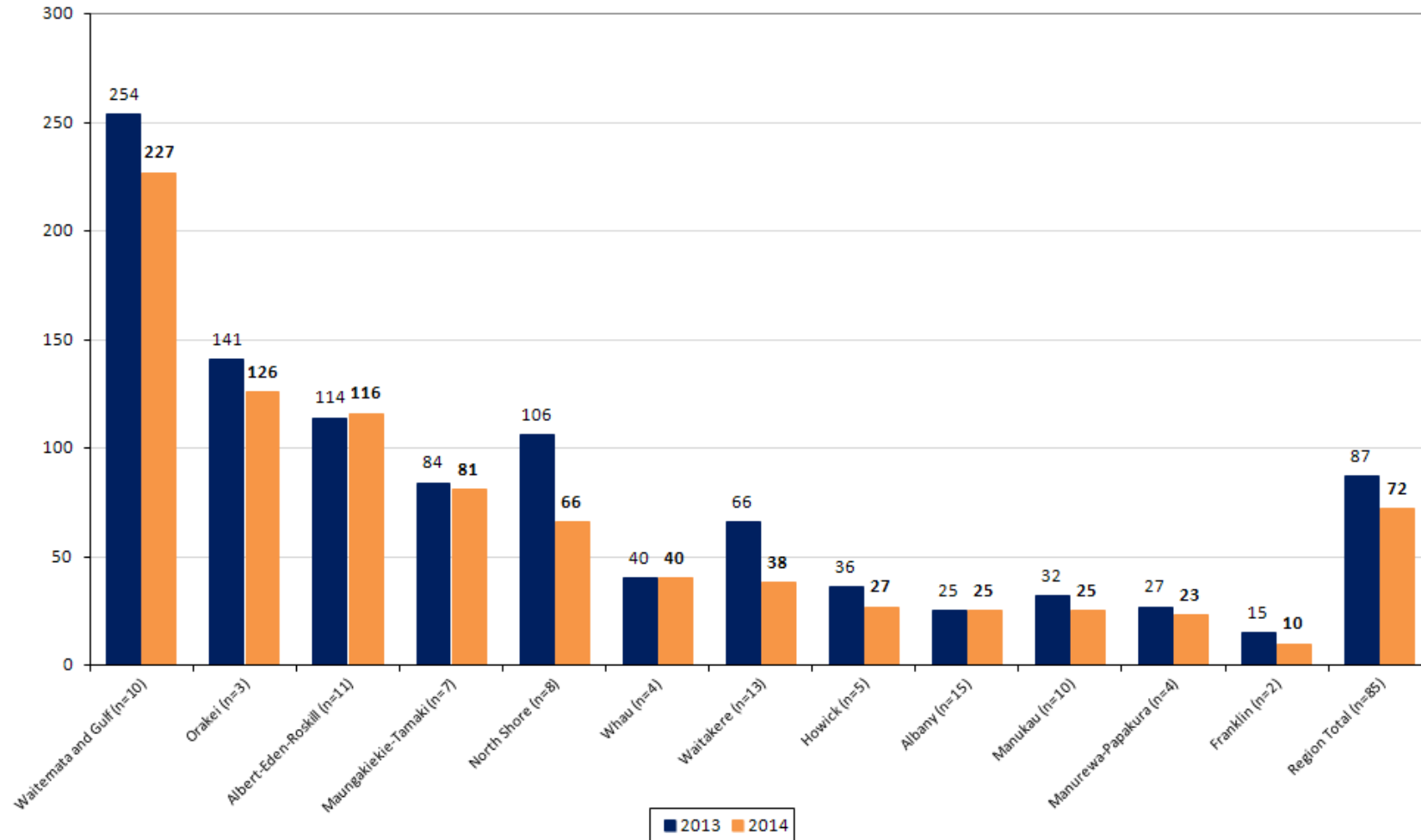


Figure 2.4: Average Morning Cyclist Movements by Ward - 2013-2014 (n)



Note: To allow for accurate time series comparisons, in 2013, average site calculations for Albert-Eden-Roskill and Orakei wards excluded Upper Dominion Road and Orakei Basin Boardwalk, which were monitored for the first time in 2013. For direct comparisons with 2014 results, these sites have been included in the 2013 date presented here (that is, results for 2013 presented in this report may differ slightly from those presented in Figure 2.4 of the 2013 Regional Summary for Albert-Eden-Roskill and Orakei wards).



- Consistent with previous years' results, the busiest site out of the 85 sites in the morning peak was the intersection of Tamaki Drive and The Strand from the Waitemata and Gulf ward (411 movements, down from 507 movements in 2013), while the lowest level of morning cyclist traffic was observed at the Edinburgh/Tobin Street in the Franklin ward (5 movements, down from 9 movements last year).
- Twenty-five per cent of the sites (21 out of the 85) have experienced higher morning peak cycle volumes than last year. The most notable increases occurred at:
 - Tom Pearce/George Bolt Memorial Drive (Manukau ward) – up from 4 to 13 movements (225 per cent);
 - Orakei Basin Boardwalk (Orakei ward) – up from 14 to 27 movements (93 per cent); and
 - Harris/Smales Road (Howick ward) – up from 27 to 33 movements (22 per cent).
- In contrast, the remaining 75 per cent of the sites (64 out of the 85) have recorded decreases in total morning cyclist numbers this year compared with 2013. The most noticeable decreases occurred at:
 - Triangle Road/Don Buck Road (Waitakere ward) – down from 46 to 12 movements (74 per cent);
 - Birkenhead Ave/Mokoia Road (North Shore ward) – down from 29 to 9 movements (69 per cent);
 - Triangle/Huruhuru Road (Waitakere ward) – down from 73 to 25 movements (66 per cent);
 - Luckens/Hobsonville Road (Albany and Waitakere wards) – down from 44 to 17 movements (61 per cent);
 - Squadron Drive/Buckley Avenue (Albany ward) – down from 46 to 19 movements (59 per cent); and
 - Central Park Drive (Waitakere ward) – down from 135 to 56 movements (59 per cent).



**Table 2.5: Summary Of Morning Cyclist Movements
2007-2014 (n) – 6:30am to 9:00am**

Site No.	Location	Area	2007	2008	2009	2010	2011	2012	2013	2014	Change 13-14	Change 07-14
10	Tamaki Drive/The Strand	Waitematā and Gulf	480	416	321	498	630	503	507	411	-19%	-14%
8	Symonds Street/Karangahape Road	Waitematā and Gulf	290	285	246	283	317	338	410	385	-6%	33%
9	Karangahape Road/Queen Street	Waitematā and Gulf	246	212	238	272	256	266	315	343	9%	39%
7	North Western Cycleway/St Lukes	Albert-Eden-Roskill	152	156	155	222	240	222	277	315	14%	107%
6	North Western Cycleway/ Great North Road	Albert-Eden-Roskill	98	156	145	244	204	201	258	261	1%	166%
2	Ponsonby/Karangahape Road	Waitematā and Gulf	226	199	176	242	222	204	253	257	2%	14%
90	Broadway/Khyber Pass	Waitematā and Gulf	-	-	-	-	-	292	322	255	-21%	-
13	Ian McKinnon/Newton Road	Waitematā and Gulf	-	-	139	190	236	219	303	230	-24%	-
11	Remuera/Orakei Road	Orakei	86	100	107	149	173	142	232	196	-16%	128%
17	Onehunga Harbour Road	Maungakiekie-Tamaki	93	88	74	98	139	171	178	189	6%	103%
22	Ferry Terminal	Waitematā and Gulf	195	158	137	198	205	189	205	177	-14%	-9%
20	St Heliers Bay/West Tamaki Road	Maungakiekie-Tamaki/Orakei	139	107	61	98	150	86	177	154	-13%	11%
35	Lake Road, by Takapuna Grammar	North Shore	127	200	166	186	220	175	159	126	-21%	-1%
58	North Western Cycleway/near Te Atatu Road off-ramp	Waitakere	102	121	157	179	155	187	218	125	-43%	23%
5	Dominion/Balmoral Road	Albert-Eden-Roskill	114	90	85	91	99	97	128	123	-4%	8%
92	Upper Dominion Road	Albert-Eden-Roskill	-	-	-	-	-	-	97	113	16%	-
1	Victoria/Wellesley/Halsey Street	Waitematā and Gulf	70	57	59	82	116	82	103	107	4%	53%
3	Great North/Carrington Road	Albert-Eden-Roskill	114	95	97	150	103	112	112	97	-13%	-15%
42	Shakespeare/East Coast Road	North Shore	82	127	177	146	181	145	172	97	-44%	18%
36	Hurstmere Road/Killarney Street	North Shore	76	134	186	180	191	154	176	97	-45%	28%
12	Manukau Road/Greenlane West	Albert-Eden-Roskill	103	92	84	130	120	110	99	92	-7%	-11%



Site No.	Location	Area	2007	2008	2009	2010	2011	2012	2013	2014	Change 13-14	Change 07-14
37	Taharoto/Northcote Road	North Shore	111	160	98	117	202	141	152	90	-41%	-19%
21	Great South Road/Campbell Road/Main Highway	Albert-Eden-Roskill/Maungakiekie-Tamaki	89	53	64	69	60	68	77	79	3%	-11%
73	Blockhouse Bay/Great North Road	Albert-Eden-Roskill/Whau	-	57	57	66	56	60	73	72	-1%	-
78	Lagoon Drive/Church Crescent	Maungakiekie-Tamaki	-	-	57	100	65	66	72	70	-3%	-
16	Jervois Road/Wallace Street	Waitematā and Gulf	-	-	60	88	73	62	70	67	-4%	-
53	326 Te Atatu Road, near Covil Avenue	Waitakere	44	52	79	65	73	75	76	63	-17%	43%
14	Mount Albert/New North Road	Albert-Eden-Roskill	75	68	59	91	97	94	70	62	-11%	-17%
84	Behind Auckland Council Building, Orewa	Albany	-	-	75	73	72	61	66	59	-11%	-
72	Te Atatu/Old Te Atatu Road/Tatau Way	Waitakere	-	56	66	105	63	103	88	58	-34%	-
47	Oteha Valley/East Coast Road	Albany	42	40	69	87	53	68	60	56	-7%	33%
52	Central Park Drive	Waitakere	61	68	91	94	100	112	135	56	-59%	-8%
32	McKenzie/Coronation/Walmsley Road	Manukau	28	21	22	38	32	19	48	50	4%	79%
4	Patiki/Rosebank Road	Whau	37	34	38	38	56	52	46	48	4%	30%
89	Sunnynook/East Coast Road	Albany/North Shore	-	-	-	-	81	95	96	45	-53%	-
88	Keith Hay Park	Albert-Eden-Roskill	-	-	-	28	29	28	45	43	-4%	-
75	Stanley Street/Grafton Road	Waitematā and Gulf	-	36	49	47	27	38	55	39	-29%	-
80	Pakuranga Road/Ti Rakau Drive	Howick	-	-	46	70	59	51	55	39	-29%	-
41	Wairau/Glenfield Road	North Shore	34	39	42	38	41	36	32	37	16%	9%
38	Rosedale/East Coast Road	Albany	54	52	105	93	73	67	65	37	-43%	-31%
79	Harris/Smales Road	Howick	-	-	35	25	35	20	27	33	22%	-
19	Ellerslie Panmure Highway/Lunn Ave	Maungakiekie-Tamaki	52	42	31	44	31	40	41	33	-20%	-37%
48	Henderson Creek	Waitakere	14	11	27	38	24	39	30	32	7%	129%



Site No.	Location	Area	2007	2008	2009	2010	2011	2012	2013	2014	Change 13-14	Change 07-14
33	Bucklands Beach/Pakuranga Road	Howick	68	53	51	45	43	40	26	31	19%	-54%
26	Great South/Browns/Orams Road	Manurewa-Papakura	25	32	21	21	29	24	26	30	15%	20%
85	Rathgar/Pomaria Road	Waitakere	-	-	32	53	33	38	36	30	-17%	-
30	Great South/East Tamaki Road	Manukau	36	24	33	25	44	40	49	30	-39%	-17%
65	Great South Road/Rosehill Drive	Manurewa-Papakura	29	42	22	29	30	30	33	29	-12%	0%
43	Glenfield/Coronation Road	North Shore	16	36	36	37	27	35	33	28	-15%	75%
55	Swanson/Ranui Station Road/Armada Drive	Waitakere	15	21	37	34	47	27	49	28	-43%	87%
91	Orakei Basin Boardwalk	Orakei	-	-	-	-	-	-	14	27	93%	-
45	Beach/Browns Bay Road	Albany	11	26	29	50	47	28	43	27	-37%	145%
39	Upper Harbour/Albany Highway	Albany	14	54	63	65	57	51	55	27	-51%	93%
28	Massey/Buckland Road	Manukau	12	11	19	16	18	14	24	26	8%	117%
24	Great South Road/Te Irirangi Drive/Cavendish Drive	Manukau	34	25	19	28	41	28	42	26	-38%	-24%
18	Great South Road/High Street/Atkinson/Park Avenue	Manukau	38	30	21	25	20	34	34	25	-26%	-34%
23	Great South/Bairds Road	Manukau	32	27	29	34	40	39	50	25	-50%	-22%
87	Triangle/Huruhuru Road	Waitakere	-	-	-	59	52	71	73	25	-66%	-
74	Apirana Avenue/Pilkington/Tripoli Road	Maungakiekie-Tamaki	-	22	12	30	14	19	20	22	10%	-
76	Waikaraka Cycle Way	Maungakiekie-Tamaki	-	13	18	7	29	28	29	22	-24%	-
46	Rosedale/Bush Road	Albany	15	36	26	48	29	22	43	22	-49%	47%
15	Richardson Road/Maioro Street	Albert-Eden-Roskill/Whau	-	-	8	14	15	29	25	21	-16%	-
71	Highbrook Drive	Manukau	-	13	20	27	23	21	24	20	-17%	-
40	Oteha Valley Road/SH17/Albany Highway	Albany	4	20	25	29	26	40	29	19	-34%	375%
34	Te Irirangi Drive/Ti Rakau Drive	Howick	36	36	30	30	37	30	41	19	-54%	-47%
70	Squadron Drive/Buckley Avenue*	Albany	-	17	23	37	34	28	46	19	-59%	-



Site No.	Location	Area	2007	2008	2009	2010	2011	2012	2013	2014	Change 13-14	Change 07-14
31	Wyllie Avenue/Puhinui Road	Manukau	18	8	12	23	13	8	17	18	6%	0%
50	Lincoln Road/Fairdene Avenue	Waitakere	13	19	21	21	26	34	31	18	-42%	38%
56	3 Rankin Avenue	Whau	16	17	21	12	16	20	15	17	13%	6%
66	Great South Road/Taka Street	Manurewa-Papakura	18	19	12	15	23	18	21	17	-19%	-6%
57	West Coast/Rosier Road	Waitakere	19	18	28	31	25	19	24	17	-29%	-11%
64	Porchester Road/Walters Road	Manurewa-Papakura	22	19	19	-	33	18	27	17	-37%	-23%
51	Luckens/Hobsonville Road	Albany/Waitakere	20	25	26	41	14	42	44	17	-61%	-15%
68	Queen/Harris Street	Franklin	44	31	27	18	14	11	20	15	-25%	-66%
82	Hibiscus Coast Highway/Jelas Road	Albany	-	-	15	24	19	20	28	15	-46%	-
81	Te Irirangi Drive/Ormiston Road	Howick/Manukau	-	-	13	25	24	18	31	15	-52%	-
63	Gulf Harbour Drive/Laurie Southwick Parade	Albany	17	14	5	14	12	13	24	14	-42%	-18%
25	Tom Pearce/George Bolt Memorial Drive	Manukau	-	-	6	5	15	3	4	13	225%	-
54	Te Atatu Road/Elcoat Avenue	Waitakere	26	27	37	30	30	34	20	12	-40%	-54%
49	Triangle Road/Don Buck Road	Waitakere	24	29	21	27	35	30	46	12	-74%	-50%
61	D'Oyly Reserve cycleway	Albany	14	19	5	31	13	14	13	10	-23%	-29%
44	Birkenhead Ave/Mokoia Road	North Shore	20	20	27	29	22	17	29	9	-69%	-55%
59	Whangaparaoa Road, near Red Beach Intersection	Albany	13	15	15	21	11	15	15	7	-53%	-46%
60	Whangaparaoa Road, near Hibiscus Coast Highway intersection	Albany	11	9	6	13	7	10	10	6	-40%	-45%
69	Edinburgh/Tobin Street	Franklin	17	16	15	17	11	7	9	5	-44%	-71%
	Total (60 sites since 2007)^		4109	4192	4135	5119	5370	4969	5726	4798	-16%	17%
	Total (67 sites since 2008)^		-	4406	4380	5438	5616	5266	6061	5050	-17%	-
	Total (78 sites in 2009)		-	-	4866	6105	6262	5853	6778	5642	-17%	-



Site No.	Location	Area	2007	2008	2009	2010	2011	2012	2013	2014	Change 13-14	Change 07-14
	Total (80 sites in 2010)		-	-	-	6192	6343	5952	6896	5693	-17%	-
	Total (82 sites in 2011)		-	-	-	-	6457	6065	7019	5755	-18%	-
	Total (83 sites in 2012)		-	-	-	-	-	6357	7341	6010	-18%	-
	Total (85 sites since 2013)		-	-	-	-	-	-	7452	6150	-17%	-

^Note that the evening count for D'Oyly Reserve cycleway (site 61) in 2008 is considered as an outlier, so the total figures exclude this outlier for more accurate comparison.

*Note that the Squadron Drive/Buckley Avenue (site 70) is the relocated site from previous Upper Harbour Drive/Buckley Avenue, so previous results are not directly comparable.



Total morning cyclist characteristics are shown in Table 2.6 below.

- Overall, 91 per cent of morning cyclists in the Auckland region were adults in 2014 (stable from 90 per cent last year). Of the 12 wards monitored, the Waitemata and Gulf ward again had the highest proportion of adults cyclists (99 per cent, unchanged from last year) whilst the Franklin ward had the greatest share of cyclists identified as school children (40 per cent).
- The majority of cyclists were wearing a helmet (94 per cent, stable from 95 per cent in 2013). Orakei ward had the highest proportion of cyclists who are wearing a helmet (99 per cent) whilst the Manukau ward had the greatest share of cyclists not wearing helmets (21 per cent).
- Eighty-two percent of all morning cyclists were identified as male (unchanged from 12 months ago). Manukau ward had the highest proportion of male cyclists (94 per cent), while North Shore, Waitemata and Gulf, Orakei and Manurewa-Papakura wards had the highest share of female cyclists (19 per cent each).
- In the morning, 59 per cent of all cyclists were riding on the road (stable from 61 per cent last year). Twenty per cent of cyclists were riding on the footpath and the remaining 21 per cent rode on an off-road cycleway. Orakei ward had the highest share of cyclists riding on the road (88 per cent), while Albert-Eden-Roskill ward (40 per cent) had the greatest share of cyclists using an off-road cycleway. Waitakere ward had the highest proportion of footpath riders (54 per cent).

Table 2.6: Aggregate Totals of Morning Cyclist Characteristics - 2007-2014 (%)

	<i>Aggregate Total (2007)</i>	<i>Aggregate Total (2008)</i>	<i>Aggregate Total (2009)</i>	<i>Aggregate Total (2010)</i>	<i>Aggregate Total (2011)</i>	<i>Aggregate Total (2012)</i>	<i>Aggregate Total (2013)</i>	<i>Aggregate Total (2014)</i>
Cyclist Type								
Adult	86	86	85	87	88	88	90	91
School child	14	14	15	13	12	12	10	9
Helmet Wearing								
Helmet on head	93	93	93	93	93	92	95	94
No helmet	7	7	7	7	7	8	5	6
Gender								
Male	-	-	-	-	77	80	82	82
Female	-	-	-	-	16	15	16	16
Can't tell	-	-	-	-	7	5	2	2
Where Riding								
Road	69	73	63	63	65	62	61	59
Footpath	21	20	23	23	19	17	20	20
Off-road cycleway	9	7	14	14	16	21	19	21
Base:	4109	4406	4866	6192	6457	6357	7452	6150



Table 2.7: Summary of Morning Cyclist Characteristics by Ward in 2014

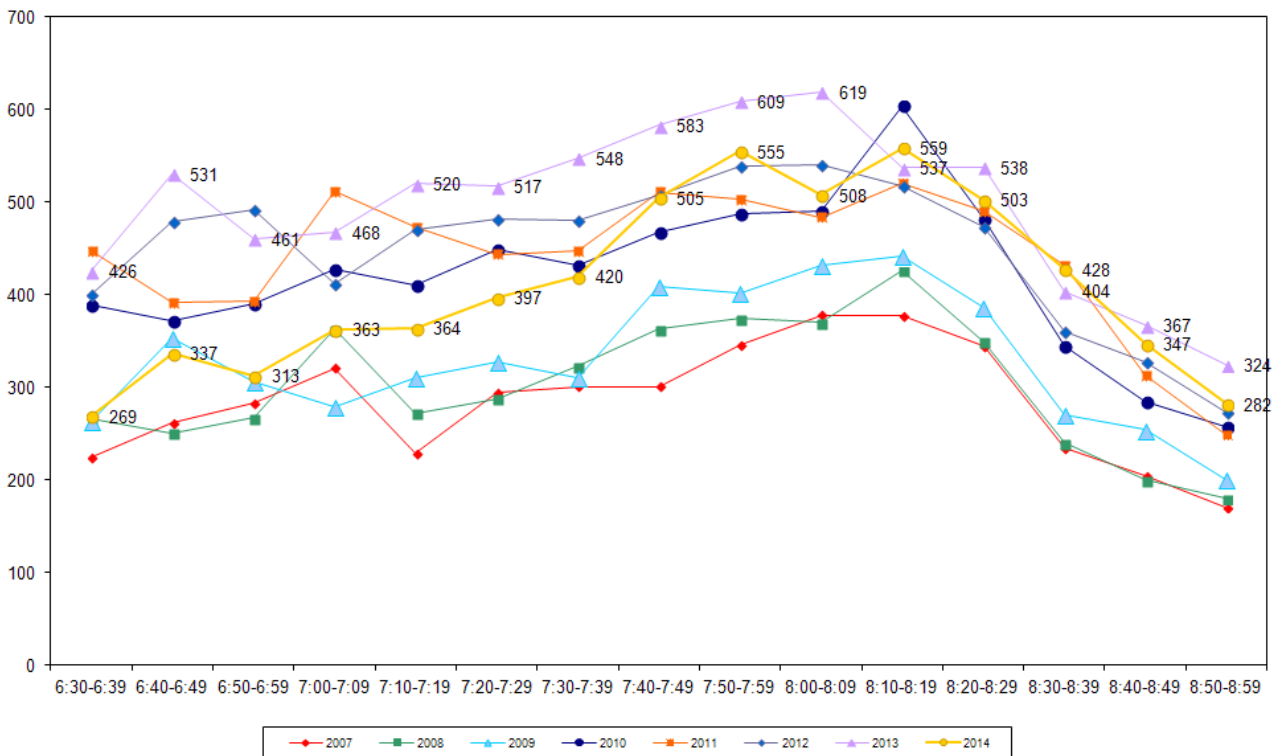
	<i>Albany</i>	<i>North Shore</i>	<i>Wai-takere</i>	<i>Waite-mata and Gulf</i>	<i>Albert/Eden/Roskill</i>	<i>Whau</i>	<i>Orakei</i>	<i>Maungakiekie-Tamaki</i>	<i>Howick</i>	<i>Manukau</i>	<i>Manurewa-Papakura</i>	<i>Franklin</i>
Cyclist Type												
Adult	70	76	77	99	92	96	96	92	87	92	70	60
School child	30	24	23	1	8	4	4	8	13	8	30	40
Helmet Wearing												
Helmet on head	93	97	90	94	97	88	99	95	88	79	87	95
No helmet	7	3	10	5	3	11	1	5	12	21	13	5
Can't tell	0	0	0	1	0	1	0	0	0	0	0	0
Gender												
Male	81	80	89	79	82	89	80	84	88	94	80	90
Female	18	19	10	19	17	11	19	15	8	4	19	10
Can't tell	1	1	1	2	1	0	1	1	4	2	1	0
Where Riding												
Road	55	72	23	74	45	63	88	76	57	57	58	60
Footpath	22	26	54	13	15	27	5	18	43	35	40	40
Off-road cycleway	23	2	23	12	40	10	7	6	0	8	2	0
Can't tell	0	0	0	1	0	0	0	0	0	0	0	0
Base:	380	529	493	2271	1278	158	377	569	137	248	93	20

Note: Orange highlighting denotes the ward with the highest proportion of a particular characteristic when compared to the other wards. Also, base sizes add to more than total number of cycle movements as sites on ward boundaries have been included in both wards.



- Figure 2.5 shows the overall pattern of total morning cyclist volumes recorded at the 85 sites monitored in the Auckland region. Morning cyclist numbers remained steady over the monitoring period, increasing to a peak of 559 movements between 8:10am and 8:19am. From there, cycle volumes declined until the end of the morning peak period. The trend was consistent with previous years.

**Figure 2.5: Total Cyclist Frequency – Morning Peak
2007-2014 (n)**





2.3 Evening Peak

Key Points

- A total of 6,727⁶ cyclist movements were recorded in the evening peak period across the 85 sites monitored in 2014. This represents a **9 per cent decrease** from 2013 (7,412 movements).
- As shown in Figures 2.6, in 2014 the average volume of evening cyclists across all 85 sites in the Auckland region is 79 cycle movements. Of the 12 wards, the average number of evening cyclists is highest in the Waitemata and Gulf ward (235 movements) and lowest in Franklin (16 movements).
- Of the sites monitored in 2013 and 2014, Figure 2.7 compares the average evening cycle volume of each ward over the last twelve months. All but two wards recorded lower averages compared to last year, the most considerable decrease being at Waitakere (down from 76 to 50). However, increases were observed at Manurewa-Papakura (up from 28 to 31) and most notably at Albert-Eden-Roskill (up from 112 to 127).

⁶ It is important to note that this figure represents individual cyclist movements rather than total cyclist numbers. Due to the close proximity of sites to one another (particularly in Auckland City's CBD), it is possible for the same cyclist to be counted at more than one site. It is also possible to 'double count' cyclists if they use the same intersection more than once during a shift. At the same time, there will be many cycle trips that were not counted at all by this methodology, if a cyclist's route does not pass through a monitoring location. Because of these limitations, it cannot be said that 6,727 different cyclists were counted on the Auckland region's roads using these sites; the actual number of cyclists, and the number of cycle trips they take, may be higher or lower than the number of cycle movements counted through this methodology.



Figure 2.6: Average and Range of Evening Cyclist Movements by Ward in 2014 (All 85 Sites)

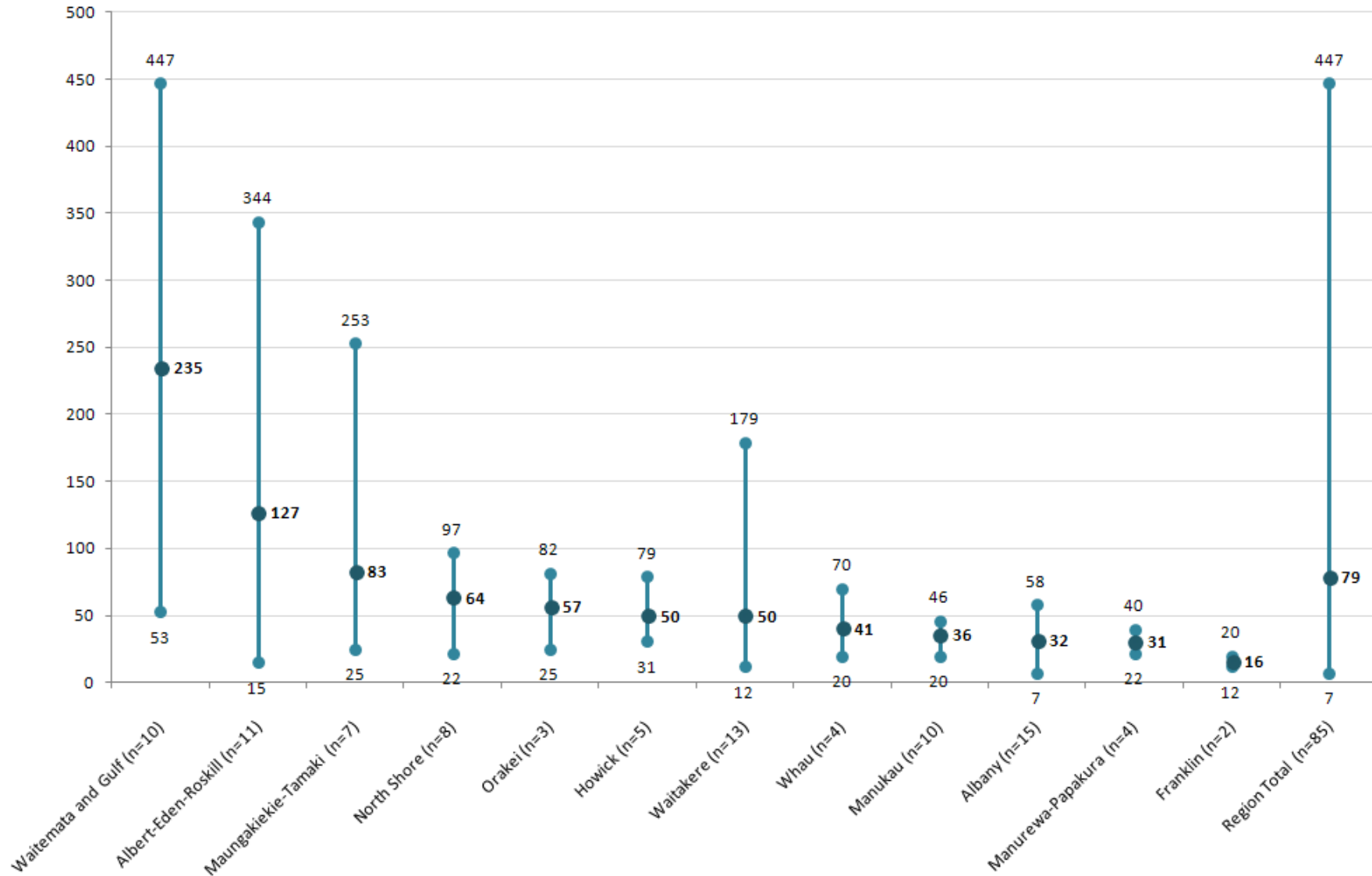
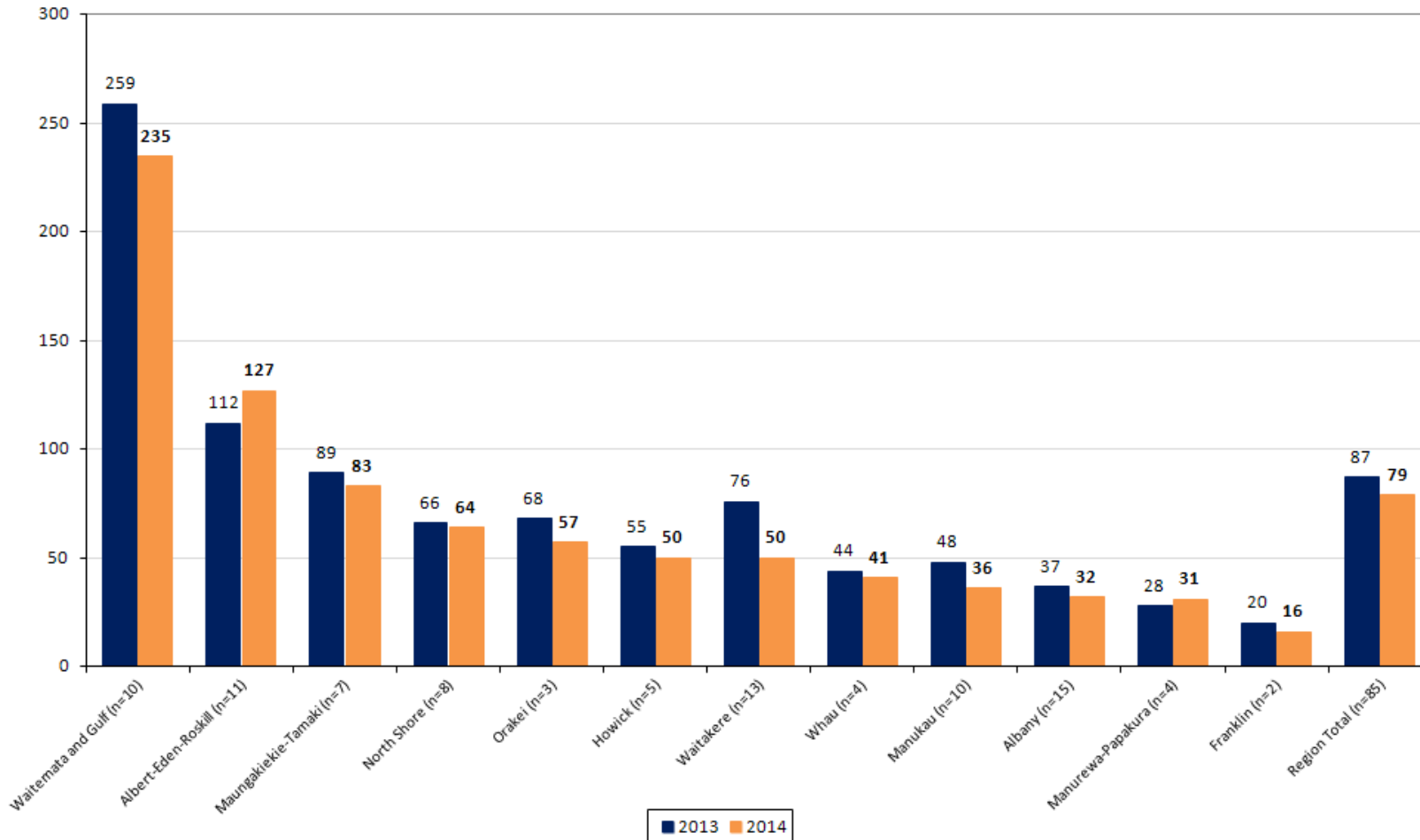


Figure 2.7: Average Evening Cyclist Movements by Ward 2013-2014 (n)



Note: To allow for accurate time series comparisons, in 2013, average site calculations for Albert-Eden-Roskill and Orakei wards excluded Upper Dominion Road and Orakei Basin Boardwalk, which were monitored for the first time in 2013. For direct comparisons with 2014 results, these sites have been included in the 2013 date presented here (that is, results for 2013 presented in this report may differ slightly from those presented in Figure 2.7 of the 2013 Regional Summary for Albert-Eden-Roskill and Orakei wards).

S.



- The busiest site of the 85 monitored in the evening period this year was the intersection of Symonds Street and Karangahape Road in Waitemātā and Gulf ward (447 movements, down from 492 movements in 2013). The lowest level of evening cyclist traffic was observed at the Hibiscus Coast Highway/Jelas Road intersection in Albany ward (7 movements, down from 15 movements last year).
- Thirty-three per cent (28 of all 85 sites monitored in 2013 and 2014) have experienced higher cycle volumes in the evening than last year. The most noticeable increases occurred at:
 - Beach/Browns Bay Road (Albany ward) – up from 17 to 43 movements (153 per cent);
 - Porchester Road/Walters Road (Manurewa-Papakura ward) - up from 16 to 28 movements (75 per cent)
 - Great South/Browns/Orams Road (Manurewa-Papakura ward) – up from 23 to 40 movements (74 per cent); and
 - Victoria/Wellesley/Halsey Street (Waitemātā and Gulf ward) – up from 73 to 117 movements (60 per cent).
- In contrast, 60 per cent of the sites (51 of all 85 sites monitored in 2013 and 2014) have recorded decreases in evening cyclist numbers. The most noticeable decreases occurred at:
 - Lincoln Road/Fairdene Avenue (Waitakere ward) - down from 37 to 12 movements (68 per cent)
 - Luckens/Hobsonville Road (Albany/Waitakere ward) – down from 60 to 24 movements (60 per cent)
 - Hibiscus Coast Highway/Jelas Road (Albany ward) – down from 15 to 7 movements (53 per cent)
 - Central Park Drive (Waitakere ward) – down from 138 to 69 movements (50 per cent); and
 - West Coast/Rosier Road (Waitakere ward) – down from 32 to 16 movements (50 per cent).
- Five sites registered no change in evening cycle volumes over the last 12 months.



**Table 2.8: Summary of Evening Cyclist Movements
2007-2014 (n) – 4:00pm to 7:00pm**

Site No.	Location	Area	2007	2008	2009	2010	2011	2012	2013	2014	Change 13-14	Change 07-14
8	Symonds Street/Karangahape Road	Waitematā and Gulf	349	336	282	314	373	394	492	447	-9%	28%
10	Tamaki Drive/The Strand	Waitematā and Gulf	420	370	282	438	429	441	414	388	-6%	-8%
7	North Western Cycleway/St Lukes	Albert-Eden-Roskill	172	175	155	210	273	207	270	344	27%	100%
2	Ponsonby/Karangahape Road	Waitematā and Gulf	261	216	194	317	289	294	342	301	-12%	15%
6	North Western Cycleway/Great North Road	Albert-Eden-Roskill	134	213	141	241	282	204	261	281	8%	110%
9	Karangahape Road/Queen Street	Waitematā and Gulf	261	212	221	310	298	307	339	270	-20%	3%
90	Broadway/Khyber Pass	Waitematā and Gulf	-	-	-	-	-	285	315	268	-15%	-
13	Ian McKinnon/Newton Road	Waitematā and Gulf	-	-	152	184	324	284	279	266	-5%	-
17	Onehunga Harbour Road	Maungakiekie-Tamaki	156	132	106	159	171	152	248	253	2%	62%
58	North Western Cycleway/near Te Atatu Road off-ramp	Waitakere	130	151	198	209	190	238	236	179	-24%	38%
22	Ferry Terminal	Waitematā and Gulf	185	158	111	197	186	200	212	178	-16%	-4%
3	Great North/Carrington Road	Albert-Eden-Roskill	121	136	96	164	129	94	116	130	12%	7%
12	Manukau Road/Greenlane West	Albert-Eden-Roskill	122	113	92	127	107	95	100	125	25%	2%
92	Upper Dominion Road	Albert-Eden-Roskill	-	-	-	-	-	-	107	118	10%	-
1	Victoria/Wellesley/Halsey Street	Waitematā and Gulf	90	79	65	80	109	110	73	117	60%	30%
5	Dominion/Balmoral Road	Albert-Eden-Roskill	123	111	98	114	98	91	107	112	5%	-9%
14	Mount Albert/New North Road	Albert-Eden-Roskill	81	96	83	118	104	76	100	107	7%	32%
42	Shakespeare/East Coast Road	North Shore	55	123	133	159	105	93	94	97	3%	76%
36	Hurstmere Road/Killarney Street	North Shore	45	118	132	122	113	108	95	95	0%	111%
35	Lake Road, by Takapuna Grammar	North Shore	65	97	129	141	96	146	107	94	-12%	45%
78	Lagoon Drive/Church Crescent	Maungakiekie-Tamaki	-	-	72	95	98	71	110	85	-23%	-



Site No.	Location	Area	2007	2008	2009	2010	2011	2012	2013	2014	Change 13-14	Change 07-14
11	Remuera/Orakei Road	Orakei	109	89	80	95	107	71	116	82	-29%	-25%
37	Taharoto/Northcote Road	North Shore	51	110	104	112	105	77	82	80	-2%	57%
80	Pakuranga Road/Ti Rakau Drive	Howick	-	-	77	92	65	76	79	79	0%	-
21	Great South Road/Campbell Road/Main Highway	Albert-Eden-Roskill/ Maungakiekie-Tamaki	85	61	87	102	78	64	69	70	1%	-18%
73	Blockhouse Bay/Great North Road	Albert-Eden- Roskill/Whau	-	60	62	75	73	69	68	70	3%	-
52	Central Park Drive	Waitakere	66	89	121	106	112	134	138	69	-50%	5%
72	Te Atatu/Old Te Atatu Road/Tatau Way	Waitakere	-	55	68	102	78	90	104	68	-35%	-
20	St Heliers Bay/West Tamaki Road	Maungakiekie- Tamaki/Orakei	69	60	47	72	74	49	71	65	-8%	-6%
16	Jervois Road/Wallace Street	Waitematā and Gulf	-	-	51	79	75	79	66	65	-2%	-
53	326 Te Atatu Road, near Covil Avenue	Waitakere	43	55	59	62	54	60	77	61	-21%	42%
33	Bucklands Beach/Pakuranga Road	Howick	72	77	43	69	64	45	45	59	31%	-18%
46	Rosedale/Bush Road	Albany	16	37	46	61	56	41	57	58	2%	263%
48	Henderson Creek	Waitakere	32	19	46	46	42	77	56	55	-2%	72%
-55	Swanson/Ranui Station Road/Armada Drive	Waitakere	47	65	66	68	85	88	67	53	-21%	13%
75	Stanley Street/Grafton Road	Waitematā and Gulf	-	29	47	46	47	56	62	53	-15%	-
89	Sunnynook/East Coast Road	Albany/North Shore	-	-	-	-	93	60	53	52	-2%	-
76	Waikaraka Cycle Way	Maungakiekie-Tamaki	-	41	33	35	36	24	54	51	-6%	-
39	Upper Harbour/Albany Highway	Albany	11	44	75	93	91	136	79	48	-39%	336%
38	Rosedale/East Coast Road	Albany	22	46	54	59	70	51	47	48	2%	118%
47	Oteha Valley/East Coast Road	Albany	17	74	69	81	76	69	46	47	2%	176%



Site No.	Location	Area	2007	2008	2009	2010	2011	2012	2013	2014	Change 13-14	Change 07-14
24	Great South Road/Te Irirangi Drive/Cavendish Drive	Manukau	39	26	22	44	53	50	77	46	-40%	18%
70	Squadron Drive/Buckley Avenue*	Albany	-	18	45	57	49	82	60	46	-23%	-
81	Te Irirangi Drive/Ormiston Road	Howick/Manukau	-	-	20	41	32	32	54	46	-15%	-
4	Patiki/Rosebank Road	Whau	45	45	34	52	65	43	59	43	-27%	-4%
45	Beach/Browns Bay Road	Albany	8	19	30	27	28	33	17	43	153%	438%
31	Wyllie Avenue/Puhinui Road	Manukau	20	25	23	34	62	39	78	42	-46%	110%
30	Great South/East Tamaki Road	Manukau	37	27	30	40	45	46	47	42	-11%	14%
41	Wairau/Glenfield Road	North Shore	30	34	38	53	52	69	37	42	14%	40%
87	Triangle/Huruhuru Road	Waitakere	-	-	-	78	69	106	80	41	-49%	-
40	Oteha Valley Road/SH17/Albany Highway	Albany	15	28	47	62	56	88	56	41	-27%	173%
26	Great South/Browns/Orams Road	Manurewa-Papakura	35	23	18	37	41	20	23	40	74%	14%
34	Te Irirangi Drive/Ti Rakau Drive	Howick	45	39	29	48	39	56	66	36	-45%	-20%
18	Great South Road/High Street/Atkinson/Park Avenue	Manukau	46	30	28	36	51	41	45	36	-20%	-22%
23	Great South/Bairds Road	Manukau	36	29	28	37	49	42	53	35	-34%	-3%
66	Great South Road/Taka Street	Manurewa-Papakura	40	39	24	28	37	31	34	34	0%	-15%
19	Ellerslie Panmure Highway/Lunn Ave	Maungakiekie-Tamaki	66	52	51	56	46	39	53	33	-38%	-50%
32	McKenzie/Coronation/Walmsley Road	Manukau	42	36	30	49	61	29	42	32	-24%	-24%
28	Massey/Buckland Road	Manukau	31	20	20	29	35	34	34	32	-6%	3%
79	Harris/Smales Road	Howick	-	-	25	37	40	24	30	31	3%	-
43	Glenfield/Coronation Road	North Shore	12	39	42	56	25	38	25	30	20%	150%
56	3 Rankin Avenue	Whau	15	21	17	20	26	18	25	30	20%	100%
71	Highbrook Drive	Manukau	-	16	18	13	30	29	23	29	26%	-
49	Triangle Road/Don Buck Road	Waitakere	43	32	35	63	53	53	41	28	-32%	-35%



Site No.	Location	Area	2007	2008	2009	2010	2011	2012	2013	2014	Change 13-14	Change 07-14
64	Porchester Road/Walters Road	Manurewa-Papakura	28	27	30	-	39	26	16	28	75%	0%
85	Rathgar/Pomaria Road	Waitakere	-	-	53	46	35	35	32	25	-22%	-
74	Apirana Avenue/Pilkington/Tripoli Road	Maungakiekie-Tamaki	-	39	20	30	41	27	19	25	32%	-
91	Orakei Basin Boardwalk	Orakei	-	-	-	-	-	-	18	25	39%	-
51	Luckens/Hobsonville Road	Albany/Waitakere	12	16	51	54	38	70	60	24	-60%	100%
54	Te Atatu Road/Elcoat Avenue	Waitakere	24	18	32	22	18	23	24	23	-4%	-4%
65	Great South Road/Rosehill Drive	Manurewa-Papakura	24	30	37	33	43	27	38	22	-42%	-8%
44	Birkenhead Ave/Mokoia Road	North Shore	20	29	30	46	23	35	32	22	-31%	10%
25	Tom Pearce/George Bolt Memorial Drive	Manukau	-	-	21	7	39	12	29	20	-31%	-
68	Queen/Harris Street	Franklin	57	52	68	39	53	33	27	20	-26%	-65%
15	Richardson Road/Maioro Street	Albert-Eden-Roskill/Whau	-	-	13	25	22	24	23	20	-13%	-
84	Behind Auckland Council Building, Orewa	Albany	-	-	11	22	66	28	23	16	-30%	-
57	West Coast/Rosier Road	Waitakere	29	19	34	29	35	19	32	16	-50%	-45%
63	Gulf Harbour Drive/Laurie Southwick Parade	Albany	39	30	17	23	27	20	16	15	-6%	-62%
88	Keith Hay Park	Albert-Eden-Roskill	-	-	-	25	40	19	14	15	7%	-
61	D'Oyly Reserve cycleway	Albany	10	84	4	13	45	21	14	14	0%	40%
50	Lincoln Road/Fairdene Avenue	Waitakere	27	36	22	35	28	33	37	12	-68%	-56%
69	Edinburgh/Tobin Street	Franklin	18	24	19	11	17	21	12	12	0%	-33%
59	Whangaparaoa Road, near Red Beach Intersection	Albany	16	16	11	8	15	13	10	11	10%	-31%
60	Whangaparaoa Road, near Hibiscus Coast Highway intersection	Albany	17	11	6	10	15	10	9	9	0%	-47%
82	Hibiscus Coast Highway/Jelas Road	Albany	-	-	23	15	11	14	15	7	-53%	-



Site No.	Location	Area	2007	2008	2009	2010	2011	2012	2013	2014	Change 13-14	Change 07-14
	Total (60 sites since 2007)^		4308	4591	4292	5540	5547	5306	5679	5206	-8%	21%
	Total (67 sites since 2008)^		-	4849	4585	5898	5901	5683	6069	5548	-9%	-
	Total (78 sites in 2009)		-	-	5103	6541	6708	6362	6809	6208	-9%	-
	Total (80 sites in 2010)		-	-	-	6644	6817	6487	6903	6236	-10%	-
	Total (82 sites in 2011)		-	-	-	-	6949	6573	6972	6316	-9%	-
	Total (83 sites in 2012)		-	-	-	-	-	6858	7287	6584	-10%	-
	Total (85 sites since 2013)		-	-	-	-	-	-	7412	6727	-9%	-

^Note that the evening count for D'Oyly Reserve cycleway (site 61) in 2008 is considered as an outlier, so the total figures exclude this outlier for more accurate comparison.

*Note that the Squadron Drive/Buckley Avenue (site 70) is the relocated site from previous Upper Harbour Drive/Buckley Avenue, so previous results are not directly comparable.



Evening cyclist characteristics are shown in Table 2.9 below.

- Overall, 93 per cent of evening cyclists in the Auckland region were adults in 2014 (unchanged from 2013). Of the 12 wards monitored, the Waitemata and Gulf ward had the highest proportion of adult cyclists (99 per cent) whilst Manurewa-Papakura ward had the greatest share of cyclists identified as school children (29 per cent).
- Almost all cyclists were wearing a helmet (91 per cent, stable from 90 per cent last year). Orakei ward had the highest proportion of cyclists who were wearing a helmet (96 per cent) whilst the Manurewa-Papakura ward had the greatest share of cyclists who were not wearing helmets (43 per cent).
- Eighty-one per cent of evening cyclists were male (down slightly from 84 per cent last year). Manukau ward has the highest share of male cyclists (89 per cent), while North Shore, Waitemata and Gulf and Orakei wards had the highest proportion of female cyclists (20 per cent each).
- In the evening, 56 per cent of all cyclists were riding on the road (down slightly from 59 per cent last year). Twenty per cent of cyclists were riding on the footpath (stable from 21 per cent in 2013). North Shore ward had the highest share of cyclists riding on the road (75 per cent), while Waitakere ward had the greatest share of cyclists using an off-road cycleway (48 per cent). Franklin ward had the highest proportion of footpath riders (63 per cent).



**Table 2.9: Aggregate Totals of Evening Cyclist Characteristics
2007-2014 (%)**

	<i>Aggregate Total (2007)</i>	<i>Aggregate Total (2008)</i>	<i>Aggregate Total (2009)</i>	<i>Aggregate Total (2010)</i>	<i>Aggregate Total (2011)</i>	<i>Aggregate Total (2012)</i>	<i>Aggregate Total (2013)</i>	<i>Aggregate Total (2014)</i>
Cyclist Type								
Adult	92	88	90	91	91	92	93	93
School child	8	12	10	9	9	8	7	7
Helmet Wearing								
Helmet on head	87	87	89	88	88	89	90	91
No helmet	13	13	11	12	12	11	10	9
Gender								
Male	-	-	-	-	82	83	84	81
Female	-	-	-	-	15	14	15	17
Can't tell	-	-	-	-	3	3	1	2
Where Riding								
Road	67	71	60	60	58	60	59	56
Footpath	22	21	26	27	22	19	21	20
Off-road cycleway	11	8	14	13	20	21	20	23
Don't know	0	0	0	0	0	0	0	1
Base:	4308	4849	5103	6644	6949	6858	7412	6727



Table 2.10: Summary of Evening Cyclist Characteristics by Ward in 2014

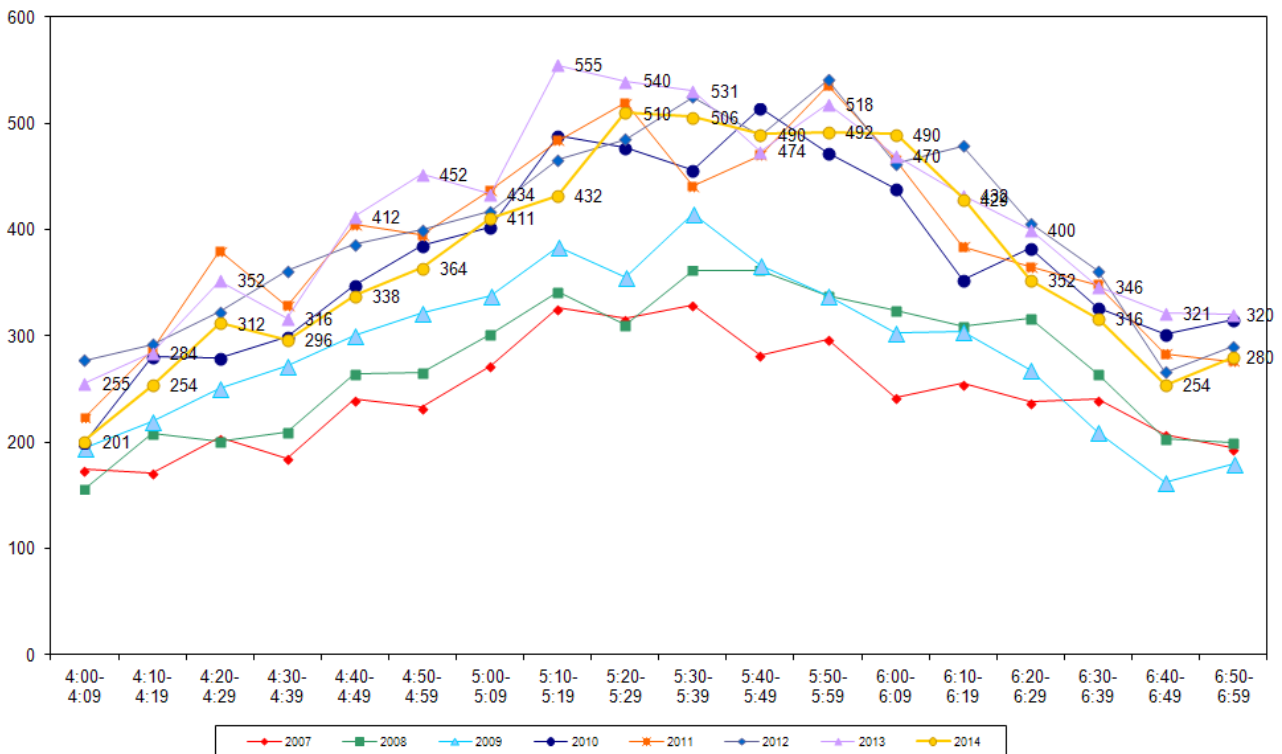
	<i>Albany</i>	<i>North Shore</i>	<i>Wai-takere</i>	<i>Waite-mata and Gulf</i>	<i>Albert/Eden/Roskill</i>	<i>Whau</i>	<i>Orakei</i>	<i>Maungakiekie-Tamaki</i>	<i>Howick</i>	<i>Manukau</i>	<i>Manurewa-Papakura</i>	<i>Franklin</i>
Cyclist Type												
Adult	86	85	87	99	95	96	89	94	83	93	71	81
School child	14	15	13	1	5	4	10	6	17	7	29	19
Can't tell	0	0	0	0	0	0	1	0	0	0	0	0
Helmet Wearing												
Helmet on head	93	93	87	93	94	90	96	94	89	81	57	72
No helmet	7	7	13	7	6	10	4	6	10	18	43	28
Can't tell	0	0	0	0	0	0	0	0	1	1	0	0
Gender												
Male	80	78	87	77	83	86	80	83	83	89	79	81
Female	19	20	13	20	16	13	20	16	11	10	19	10
Can't tell	1	2	0	3	1	1	0	1	6	1	2	9
Where Riding												
Road	69	75	26	71	44	63	74	61	69	59	48	34
Footpath	21	23	26	16	17	23	12	23	30	34	50	63
Off-road cycleway	10	2	48	12	39	14	14	16	0	6	2	0
Can't tell	0	0	0	1	0	0	0	0	1	1	0	3
Base:	479	512	654	2353	1392	163	172	582	251	360	124	32

Note: Orange highlighting denotes the ward with the highest proportion of a particular characteristic when compared to the other wards. Also, base sizes add to more than total number of cycle movements as sites on ward boundaries have been included in both wards.



- Figure 2.8 shows the overall pattern of total evening cyclist volumes recorded at the 85 sites monitored in the Auckland region. Evening cyclist numbers increased over the monitoring period to a peak of 510 cyclist movements between 5:20pm and 5:29pm, then declined until the end of the shift. This compared with the peak of 555 movements between 5:10pm and 5:19pm last year. The overall trend was consistent with previous years.

**Figure 2.8: Total Cyclist Frequency – Evening Peak
2007-2014 (n)**





2.4 Annual Average Daily Traffic (AADT) Estimates

Note: A full description of the Annual Daily Traffic tool, the calculation used, and the limitations of the estimates, are provided in Appendix Two. Readers are encouraged to review this section in conjunction with the data presented here.

- Table 2.11 provides the comparative AADT estimates for each site, based on the average of morning and evening peak AADT calculations.
- The highest AADT was at the Symonds Street/Karangahape Road intersection (1,205 daily trips, down from 1,305 daily trips last year) and the lowest was at the Whangaparaoa Road intersection near Hibiscus Coast Highway (22 daily trips).
- Twenty-four per cent of the sites monitored (20 out of 85) have recorded increases in total AADT estimates this year compared with last year. The most noticeable increases were at:
 - Orakei Basin Boardwalk (Orakei ward) – up from 46 to 76 daily trips (65 per cent); and
 - Great South/Browns/Orams Road (Manurewa-Papakura ward) – up from 71 to 101 daily trips (42 per cent).
- In contrast, AADT estimates at 63 out 85 sites are lower than last year. The most noticeable declines occurred at:
 - Luckens/Hobsonville Road (Albany ward) – down from 150 to 59 daily trips (61 per cent);
 - Triangle/Huruhuru Road (Waitakere ward) – down from 222 to 95 daily trips (57 per cent);
 - Triangle Road/Don Buck Road (Waitakere ward) – down from 127 to 57 daily trips (55 per cent);
 - Lincoln Road/Fairdene Avenue (Waitakere ward) – down from 98 to 44 daily trips (55 per cent); and
 - Central Park Drive (Waitakere ward) – down from 397 to 181 daily trips (54 per cent).



Table 2.11: AADT Estimates Based on Morning and Evening Cyclist Movements 2007-2014 (n)

Site No.	Locations	Area	AADT 2007	AADT 2008	AADT 2009	AADT 2010	AADT 2011	AADT 2012	AADT 2013	AADT 2014	Change 13-14	Change 07-14
8	Symonds Street/Karangahape Road	Waitematā and Gulf	924	899	765	865	999	1060	1305	1205	-8%	30%
10	Tamaki Drive/The Strand	Waitematā and Gulf	1313	1146	880	1365	1555	1377	1346	1163	-14%	-11%
7	North Western Cycleway/St Lukes	Albert-Eden-Roskill	469	480	451	629	743	625	796	956	20%	104%
9	Karangahape Road/Queen Street	Waitematā and Gulf	736	616	669	843	802	830	949	897	-6%	22%
2	Ponsonby/Karangahape Road	Waitematā and Gulf	705	602	536	807	738	717	858	808	-6%	15%
6	North Western Cycleway/Great North Road	Albert-Eden-Roskill	335	532	416	705	701	589	754	786	4%	135%
90	Broadway/Khyber Pass	Waitematā and Gulf	-	-	-	-	-	839	927	759	-18%	-
13	Ian McKinnon/Newton Road	Waitematā and Gulf	-	-	422	544	807	726	848	718	-15%	-
17	Onehunga Harbour Road	Maungakiekie-Tamaki	357	316	259	369	448	471	614	636	4%	78%
22	Ferry Terminal	Waitematā and Gulf	553	459	363	574	570	565	606	516	-15%	-7%
58	North Western Cycleway/near Te Atatu Road off-ramp	Waitakere	335	393	513	562	499	614	659	438	-34%	31%
11	Remuera/Orakei Road	Orakei	282	276	274	359	412	315	515	413	-20%	46%
5	Dominion/Balmoral Road	Albert-Eden-Roskill	344	291	265	296	286	274	343	342	<1%	<1%
92	Upper Dominion Road	Albert-Eden-Roskill	-	-	-	-	-	-	296	335	13%	-
3	Great North/Carrington Road	Albert-Eden-Roskill	341	333	281	455	335	301	331	327	-1%	-4%
1	Victoria/Wellesley/Halsey Street	Waitematā and Gulf	231	196	180	236	328	277	258	325	26%	41%
20	St Heliers Bay/West Tamaki Road	Maungakiekie-Tamaki/Orakei	308	246	158	249	331	199	369	325	-12%	6%
35	Lake Road, by Takapuna Grammar	North Shore	444	440	432	479	469	469	391	322	-18%	-27%
12	Manukau Road/Greenlane West	Albert-Eden-Roskill	326	296	255	374	331	299	289	313	8%	-4%
42	Shakespeare/East Coast Road	North Shore	314	364	454	442	422	350	393	282	-28%	-10%
36	Hurstmere Road/Killarney Street	North Shore	279	368	466	443	448	384	400	279	-30%	0%



Site No.	Locations	Area	AADT 2007	AADT 2008	AADT 2009	AADT 2010	AADT 2011	AADT 2012	AADT 2013	AADT 2014	Change 13-14	Change 07-14
37	Taharoto/Northcote Road	North Shore	375	396	293	333	454	322	346	248	-28%	-34%
14	Mount Albert/New North Road	Albert-Eden-Roskill	226	236	205	302	292	249	245	242	-1%	7%
78	Lagoon Drive/Church Crescent	Maungakiekie-Tamaki	-	-	186	284	234	199	262	224	-14%	-
21	Great South Road/Campbell Road/Main Highway	Albert-Eden-Roskill/Maungakiekie-Tamaki	253	165	218	246	199	192	213	217	2%	-14%
73	Blockhouse Bay/Great North Road	Albert-Eden-Roskill/Whau	-	170	173	204	186	187	205	207	1%	-
16	Jervois Road/Wallace Street	Waitematā and Gulf	-	-	162	243	215	204	198	192	-3%	-
72	Te Atatu/Old Te Atatu Road/Tatau Way	Waitakere	-	161	195	301	204	282	278	182	-34%	-
52	Central Park Drive	Waitakere	184	227	306	290	307	356	397	181	-54%	-2%
53	326 Te Atatu Road, near Covil Avenue	Waitakere	127	155	202	185	186	197	222	180	-19%	42%
80	Pakuranga Road/Ti Rakau Drive	Howick	-	-	176	234	180	183	193	168	-13%	-
47	Oteha Valley/East Coast Road	Albany	137	163	201	245	186	199	155	150	-3%	10%
89	Sunnynook/East Coast Road	Albany/North Shore	-	-	-	-	252	228	220	140	-36%	-
4	Patiki/Rosebank Road	Whau	119	114	105	130	175	139	152	133	-13%	11%
75	Stanley Street/Grafton Road	Waitematā and Gulf	-	95	140	135	106	135	170	133	-22%	-
33	Bucklands Beach/Pakuranga Road	Howick	203	187	137	164	154	123	102	129	26%	-37%
48	Henderson Creek	Waitakere	65	43	105	121	95	166	123	125	1%	92%
38	Rosedale/East Coast Road	Albany	176	143	235	224	208	173	164	123	-25%	-30%
32	McKenzie/Coronation/Walmsley Road	Manukau	101	82	75	126	133	69	131	121	-8%	19%
55	Swanson/Ranui Station Road/Armada Drive	Waitakere	88	122	148	146	189	162	167	116	-31%	32%
41	Wairau/Glenfield Road	North Shore	93	107	117	131	134	150	100	114	14%	23%



Site No.	Locations	Area	AADT 2007	AADT 2008	AADT 2009	AADT 2010	AADT 2011	AADT 2012	AADT 2013	AADT 2014	Change 13-14	Change 07-14
46	Rosedale/Bush Road	Albany	70	106	103	157	121	90	144	114	-21%	62%
84	Behind Auckland Council Building, Orewa	Albany	-	-	130	142	201	132	133	112	-16%	-
39	Upper Harbour/Albany Highway	Albany	57	143	200	228	213	265	193	107	-44%	88%
76	Waikaraka Cycle Way	Maungakiekie-Tamaki	-	76	73	59	94	76	119	104	-13%	-
30	Great South/East Tamaki Road	Manukau	106	74	92	93	129	125	140	104	-26%	-2%
24	Great South Road/Te Irirangi Drive/Cavendish Drive	Manukau	106	74	59	103	136	112	170	103	-39%	-3%
26	Great South/Browns/Orams Road	Manurewa-Papakura	86	81	57	83	101	64	71	101	42%	17%
45	Beach/Browns Bay Road	Albany	44	66	86	114	110	88	89	101	13%	128%
19	Ellerslie Panmure Highway/Lunn Ave	Maungakiekie-Tamaki	170	136	118	144	111	115	136	96	-29%	-44%
87	Triangle/Huruhuru Road	Waitakere	-	-	-	198	175	255	222	95	-57%	-
79	Harris/Smales Road	Howick	-	-	88	89	109	64	83	93	12%	-
70	Squadron Drive/Buckley Avenue*	Albany	-	51	97	135	120	156	153	92	-40%	-
18	Great South Road/High Street/Atkinson/Park Avenue	Manukau	121	87	71	88	101	108	114	88	-23%	-27%
88	Keith Hay Park	Albert-Eden-Roskill	-	-	-	77	99	69	88	86	-2%	-
23	Great South/Bairds Road	Manukau	99	81	83	103	129	118	150	86	-42%	-13%
40	Oteha Valley Road/SH17/Albany Highway	Albany	42	69	103	130	117	182	121	86	-29%	104%
81	Te Irirangi Drive/Ormiston Road	Howick/Manukau	-	-	47	95	81	72	122	86	-29%	-
31	Wyllie Avenue/Puhinui Road	Manukau	55	47	50	82	105	66	133	85	-36%	55%
28	Massey/Buckland Road	Manukau	61	44	57	64	76	68	84	84	0%	37%
43	Glenfield/Coronation Road	North Shore	64	109	113	134	76	106	85	84	-1%	32%
85	Rathgar/Pomaria Road	Waitakere	-	-	122	144	99	106	99	80	-19%	-
34	Te Irirangi Drive/Ti Rakau Drive	Howick	117	109	86	112	110	123	154	79	-49%	-33%
91	Orakei Basin Boardwalk	Orakei	-	-	-	-	-	-	46	76	65%	-



Site No.	Locations	Area	AADT 2007	AADT 2008	AADT 2009	AADT 2010	AADT 2011	AADT 2012	AADT 2013	AADT 2014	Change 13-14	Change 07-14
65	Great South Road/Rosehill Drive	Manurewa-Papakura	77	106	85	90	105	83	103	75	-27%	-3%
66	Great South Road/Taka Street	Manurewa-Papakura	83	83	51	62	86	70	79	73	-8%	-12%
71	Highbrook Drive	Manukau	-	42	55	59	77	72	68	71	4%	-
74	Apirana Avenue/Pilkington/Tripoli Road	Maungakiekie-Tamaki	-	87	46	87	78	66	57	68	19%	-
56	3 Rankin Avenue	Whau	45	55	56	46	60	55	57	67	18%	50%
64	Porchester Road/Walters Road	Manurewa-Papakura	72	66	70	-	104	63	63	65	2%	-10%
15	Richardson Road/Maioro Street	Albert-Eden- Roskill/Whau	-	-	30	56	53	77	70	60	-15%	-
51	Luckens/Hobsonville Road	Albany/Waitakere	47	60	110	137	74	161	150	59	-61%	26%
49	Triangle Road/Don Buck Road	Waitakere	96	88	80	128	127	119	127	57	-55%	-41%
54	Te Atatu Road/Elcoat Avenue	Waitakere	73	66	101	76	71	84	64	50	-22%	-31%
68	Queen/Harris Street	Franklin	146	119	135	81	94	62	68	50	-26%	-65%
57	West Coast/Rosier Road	Waitakere	69	54	90	87	86	55	81	48	-41%	-30%
25	Tom Pearce/George Bolt Memorial Drive	Manukau	-	-	38	17	77	21	46	47	3%	-
44	Birkenhead Ave/Mokoia Road	North Shore	58	71	83	108	65	74	88	44	-50%	-24%
50	Lincoln Road/Fairdene Avenue	Waitakere	57	79	62	80	78	97	98	44	-55%	-23%
63	Gulf Harbour Drive/Laurie Southwick Parade	Albany	80	63	31	53	56	47	59	42	-29%	-47%
61	D'Oyly Reserve cycleway	Albany	35	145	13	65	82	50	39	35	-11%	-1%
82	Hibiscus Coast Highway/Jelas Road	Albany	-	-	55	57	44	50	64	33	-49%	-
59	Whangaparaoa Road, near Red Beach Intersection	Albany	42	45	38	43	37	41	37	26	-30%	-38%
69	Edinburgh/Tobin Street	Franklin	51	58	49	41	40	40	30	24	-19%	-53%
60	Whangaparaoa Road, near Hibiscus Coast Highway intersection	Albany	40	29	17	34	31	29	28	22	-23%	-46%

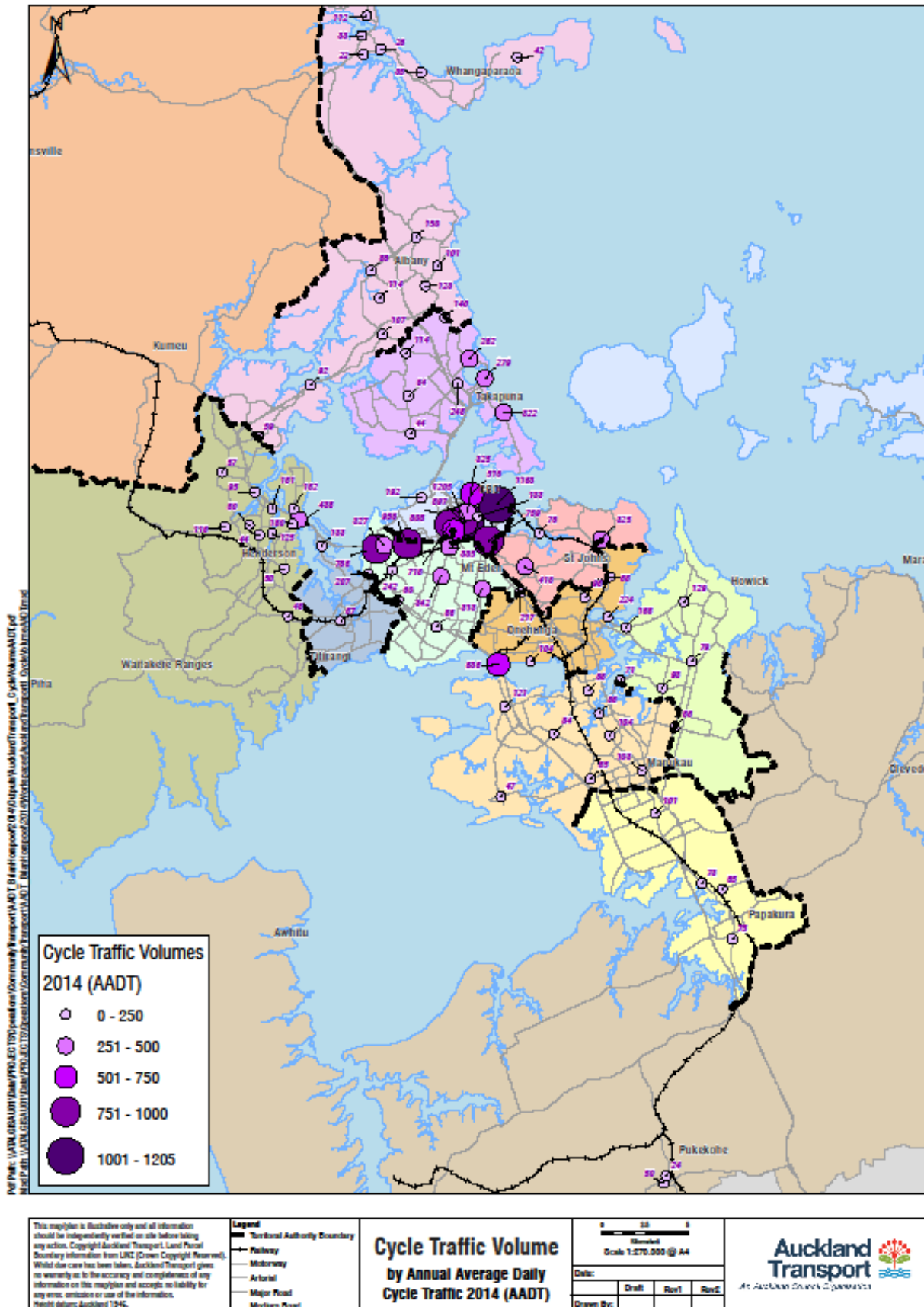


Site No.	Locations	Area	AADT 2007	AADT 2008	AADT 2009	AADT 2010	AADT 2011	AADT 2012	AADT 2013	AADT 2014	Change 13-14	Change 07-14
	Total (60 sites since 2007)^		12940	12740	12243	15461	15856	14910	16585	14510	-13%	12%
	Total (67 sites since 2008)^		-	13422	13022	16441	16721	15884	17635	15367	-13%	-
	Total (78 sites in 2009)		-	-	14478	18346	18821	17718	19753	17182	-13%	-
	Total (80 sites in 2010)		-	-	-	18621	19095	18042	20063	17298	-14%	-
	Total (82 sites in 2011)		-	-	-	-	19199	18333	20346	17503	-14%	-
	Total (83 sites in 2012)		-	-	-	-	-	19172	21273	18263	-14%	-
	Total (85 sites since 2013)		-	-	-	-	-	-	21615	18674	-14%	-

^Note that the evening count for D'Oyly Reserve cycleway (site 61) in 2008 is considered as an outlier, so the total figures exclude this outlier for more accurate comparison.

*Note that the Squadron Drive/Buckley Avenue (site 70) is the relocated site from previous Upper Harbour Drive/Buckley Avenue, so previous results are not directly comparable.

Figure 2.9: AADT Cycle Volumes in the Auckland Region – 2014





2.5 Ferry Wharf Count Summary

- Ferry wharf counts of stationary cycles were conducted prior to, and at the conclusion of, the morning and evening monitoring periods (on the same day as other sites in the ward).

Key Points

- In the morning, seven cycles were observed at the **Devonport Ferry Terminal** at 6.10am and 50 were observed at 9.10am, suggesting 43 rode to the ferry in the morning peak. This compares with 57 in 2013. In the afternoon, 62 cycles were recorded at the Devonport Ferry Terminal at 3.30pm and 13 were observed at 7.10pm, suggesting 49 ferry passengers cycled home after disembarking in the evening peak. This compares with 45 last year.
- At the **Downtown Ferry Terminal**, 18 cycles were observed at 6.10am and 17 cycles were observed at 9.10am in the morning peak. In the evening, 19 cycles were observed at 3:30pm and 23 at 7:30pm.
- At the **Bayswater Terminal**, one cycle was observed at 6.10am and 20 cycles were observed at 9.10am in the morning peak, suggesting 19 passengers cycled to the ferry. In the evening, 22 cycles were observed at 3:30pm and 15 at 7:30pm, suggesting 7 ferry passengers cycled home after disembarking in the evening peak.
- Six cycles were observed at **Matiatia Ferry Terminal** at the end of the morning peak, and 7 at **Pine Harbour**. One cycle was seen in the afternoon at each of the **Stanley Bay ferry wharf** and at the **Northcote Point ferry wharf**.
- No cycles were observed at the **Half Moon Bay, Gulf Harbour, Hobsonville** or **Birkenhead** ferry wharves.



Table 2.12: Stationery Cycle Counts at Ferry Wharves (n)

	<i>Devonport</i>				<i>Half Moon Bay</i>			
	<i>2011</i>	<i>2012</i>	<i>2013</i>	<i>2014</i>	<i>2011</i>	<i>2012</i>	<i>2013</i>	<i>2014</i>
Morning Peak								
6:10am	5	3	4	7	2	0	0	0
9:10am	47	43	61	50	0	0	2	0
Evening Peak								
3:30pm	79	26	57	62	1	0	0	0
7:10pm	11	4	12	13	0	0	0	0

	<i>Downtown</i>	<i>Bayswater</i>	<i>Stanley Bay</i>	<i>Northcote Point</i>	<i>Birkenhead</i>
	<i>2014</i>	<i>2014</i>	<i>2014</i>	<i>2014</i>	<i>2014</i>
Morning Peak					
6:10am	18	1	0	0	0
9:10am	17	20	0	0	0
Evening Peak					
3:30pm	19	22	1	1	0
7:10pm	23	15	0	0	0

	<i>Matiatia</i>	<i>Gulf Harbour</i>	<i>Hobsonville</i>		<i>Pine Harbour</i>			
	<i>2014</i>	<i>2014</i>	<i>2013</i>	<i>2014</i>	<i>2010</i>	<i>2011</i>	<i>2012</i>	<i>2014</i>
Morning Peak								
6:10am	-	0	1	0	-	-	-	-
9:10am	6	0	1	0	4	12	7	7
Evening Peak								
3:30pm	-	0	1	0	-	-	-	-
7:10pm	-	0	1	0	-	-	-	-



2.6 School Bike Shed Count Summary

Cycle Count Background Information

- A total of 302 full primary, intermediate, secondary and composite schools throughout the Auckland region were contacted by Gravitas. Of the 264 schools that responded to the survey (87 per cent⁷), most have no policies that restrict students cycling to school.⁸
- Most schools conducted their count on Tuesday the 4th of March, 2013.

Cycle Count Key Points

- Of those students from the surveyed schools eligible to cycle, on average two per cent are cycling to their schools. This result is unchanged since 2007.
- This year, 11 schools (4 per cent) reported at least 10 per cent of students cycling to school. This compares with 5 per cent in 2013. The following schools reported more than 20 per cent of students cycling to school:
 - Belmont Intermediate (North Shore ward) (34 per cent)
 - Okiwi School (Waitemata and Gulf ward) (29 per cent)
 - Hobsonville Point School (Albany ward) (24 per cent)
 - Silverdale Primary School (Albany ward) (24 per cent).
- Among secondary schools, Takapuna Grammar (North Shore ward) has the highest rate of students cycling to school (11 per cent).
- Of the 235 schools that participated in the count in both 2013 and 2014:
 - Fifty-nine schools (25 per cent) had increased their share of students cycling
 - Fifty-five schools (23 per cent) had decreased their share of students cycling
 - 121 schools (51 per cent) remain unchanged.
- The most notable increase is at Silverdale Primary School – up from 6 per cent from 2013 to 24 per cent in 2014 - and Te Kura Kaupapa Maori o Waiuku – up from 0 per cent in 2013 to 18 per cent in 2014.
- Of the 235 schools that participated in the count in both 2013 and 2014, 115 (49 per cent) had no students cycling to school. This compares with 38 per cent of these schools in 2013.
- Tables 2.14 and 2.15 illustrate the rates of cycling to school at different school levels in 2014 and in previous years. Rates of cycling to school continue to be highest among intermediate schools surveyed (4 per cent).

⁷ Compared with 90 per cent in 2013.

⁸ These exceptions are detailed in the ward level reports. Most relate to full primary schools restricting younger students from cycling.



**Table 2.14: Average Cycling Rates by School Level
2014 (n)**

<i>Year Levels</i>	<i>Number of Schools Responded (n)</i>	<i>Average School Roll Eligible To Cycle</i>	<i>Average Number of Cycles Counted</i>	<i>Average Cycling Rate per School</i>
Intermediate	36	486	20	4%
Full Primary	121	218	4	2%
Composite	31	400	2	1%
Intermediate/Secondary	25	879	12	1%
Secondary	51	1268	14	1%
Regional Total	264	541	8	2%

**Table 2.15: Summary Table of Average Cycling Rates by School Level
2007-2014**

<i>Year Levels</i>	<i>2007</i>	<i>2008</i>	<i>2009</i>	<i>2010</i>	<i>2011</i>	<i>2012</i>	<i>2013</i>	<i>2014</i>
Intermediate	5%	4%	4%	5%	4%	4%	4%	4%
Full Primary	-	-	-	-	2%	1%	2%	2%
Intermediate/Secondary	2%	2%	1%	2%	1%	1%	1%	1%
Composite	1%	1%	<1%	1%	1%	1%	1%	1%
Secondary	1%	1%	1%	1%	1%	1%	1%	1%
Regional Total	2%	2%	2%	2%	2%	2%	2%	2%



- Table 2.16 illustrates the rates of cycling to school within each of the Auckland wards. Rates of cycling to school are highest among schools in North Shore ward (4 per cent, unchanged from last year). Rates of cycling among North Shore Ward intermediate schools are particularly high (12 per cent of students cycling). By comparison, Manukau and Rodney wards (less than 1 per cent each) have the lowest rate of cycling – unchanged from 2013.

**Table 2.16: Summary Table of School Bike Count by Ward
2007-2014 (n)**

Ward	2014			Average Cycle Rate Per Ward							
	Number of Schools Responding (n)	Average School Roll Eligible To Cycle	Average Number of Cycles Counted	2007	2008	2009	2010	2011	2012	2013	2014
North Shore	17	827	32	3%	3%	3%	4%	4%	4%	4%	4%
Albany	17	667	16	2%	1%	1%	1%	1%	1%	2%	2%
Albert-Eden-Roskill	21	716	11	2%	1%	1%	21%	2%	2%	2%	2%
Franklin	24	295	5	1%	1%	1%	<1%	3%	2%	3%	2%
Orakei	15	531	9	1%	1%	2%	1%	2%	2%	2%	2%
Waitemata & Gulf	17	571	9	1%	1%	2%	2%	2%	2%	2%	2%
Howick	13	1088	14	1%	2%	3%	2%	1%	1%	1%	1%
Manurewa-Papakura	30	478	6	<1%	1%	<1%	1%	1%	1%	2%	1%
Maungakiekie-Tamaki	22	325	4	<1%	0%	<1%	0%	<1%	0%	1%	1%
Waitakere	22	491	7	1%	1%	1%	1%	1%	2%	2%	1%
Whau	12	642	6	1%	1%	1%	<1%	1%	2%	1%	1%
Manukau	33	576	2	0%	0%	<1%	<1%	<1%	<1%	<1%	<1%
Rodney	20	233	1	2%	1%	<1%	0%	1%	1%	1%	<1%
Regional Total	264	542	8	2%	2%	2%	2%	2%	2%	2%	2%



**Table 2.17: Summary Table of Average Cycling Rates by School Level and Ward
2014**

<i>Ward</i>	<i>School Type</i>					<i>All School Levels</i>
	<i>Composite</i>	<i>Full Primary</i>	<i>Intermediate</i>	<i>Intermediate/ Secondary</i>	<i>Secondary</i>	
North Shore	-	0%	12%	1%	3%	4%
Albany	<1%	7%	1%	5%	<1%	2%
Albert-Eden-Roskill	<1%	3%	6%	0%	1%	2%
Franklin	0%	3%	3%	0%	1%	2%
Orakei	1%	2%	6%	1%	1%	2%
Waitemata & Gulf	<1%	3%	5%	1%	2%	2%
Howick	0%	1%	5%	1%	1%	1%
Manurewa-Papakura	1%	3%	3%	-	1%	1%
Maungakiekie-Tamaki	1%	<1%	2%	-	2%	1%
Waitakere	1%	1%	2%	2%	1%	1%
Whau	4%	1%	2%	-	<1%	1%
Manukau	0%	<1%	1%	1%	<1%	<1%
Rodney	0	1%	-	<1%	0%	<1%
Regional Total	1%	2%	4%	1%	1%	2%

Note: A dash indicates no schools of this type responded to the survey for a Ward.

The following table ranks the 264 schools from the highest share of cyclists to the lowest.



Table 2.18: School Bike Count by School

School Name	Ward	School Type	School Roll Eligible To Cycle	No. of Cycles Counted	Cyclists as share of those eligible ⁹							
					2014	2013	2012	2011	2010	2009	2008	2007
Belmont Intermediate School	North Shore	Intermediate	541	171	32%	25%	31%	30%	33%	22%	26%	3%
Okiwi School	Waitemata and Gulf	Full Primary	35	10	29%	26%	-	-	-	-	-	-
Hobsonville Point Primary School	Albany	Full Primary	83	20	24%	31%	-	-	-	-	-	-
Silverdale Primary School	Albany	Full Primary	229	54	24%	6%	2%	8%	-	-	-	-
Te Kura Kaupapa Maori o Waiuku	Franklin	Full Primary	17	3	18%	0%	-	-				
Beachlands School	Franklin	Full Primary	245	42	17%	24%	6%	7%				
Kohia Terrace School	Albert-Eden-Roskill	Full Primary	108	17	16%	7%	2%	-	-	-	-	-
Stonefields School	Orakei	Full Primary	87	14	16%	10%	5%	-	-	-	-	-
Takapuna Grammar School	North Shore	Secondary	1650	175	11%	10%	9%	9%	8%	9%	6%	8%
Takapuna Normal Intermediate School	North Shore	Intermediate	600	67	11%	17%	8%	-	-	-	-	-
Auckland Normal Intermediate	Albert-Eden-Roskill	Intermediate	735	72	10%	3%	4%	7%	7%	6%	5%	7%
Pasadena Intermediate School	Albert-Eden-Roskill	Intermediate	253	23	9%	11%	12%	22%	26%	17%	12%	18%
Farm Cove Intermediate	Howick	Intermediate	613	56	9%	5%	5%	7%	7%	9%	6%	4%
Orewa College	Albany	Intermediate/Secondary	1560	120	8%	5%	2%	4%	7%	5%	5%	6%
Sandspit Road School	Franklin	Full Primary	338	25	7%	13%	5%	10%				
Conifer Grove School	Manurewa-Papakura	Full Primary	498	37	7%	6%	3%	4%	-	-	-	-
Tapora School	Rodney	Full Primary	29	2	7%	8%	0%	0%	-	-	-	-
Reremoana School	Manurewa-Papakura	Full Primary	357	23	6%	10%	5%	9%	-	-	-	-
Rosehill Intermediate School	Manurewa-Papakura	Intermediate	425	24	6%	7%	6%	6%	6%	6%	-	-

⁹ This share is calculated by averaging the number of cycles counted over the total number of students eligible to cycle. The figure obtained is rounded to zero decimal places.



School Name	Ward	School Type	School Roll Eligible To Cycle	No. of Cycles Counted	Cyclists as share of those eligible ⁹							
					2014	2013	2012	2011	2010	2009	2008	2007
Remuera Intermediate	Orakei	Intermediate	952	54	6%	6%	6%	6%	5%	7%	5%	9%
Waiheke Primary School	Waitemata and Gulf	Full Primary	206	12	6%	3%	-	-	-	-	-	-
Timatanga Community School	Albany	Full Primary	19	1	5%	0%	-	-	-	-	-	-
Waikowhai Intermediate School	Albert-Eden-Roskill	Intermediate	378	18	5%	4%	6%	5%	3%	4%	3%	3%
Pukehoke North School	Franklin	Full Primary	195	9	5%	3%	-	-				
Ponsonby Intermediate	Waitemata and Gulf	Intermediate	550	25	5%	5%	4%	5%	6%	5%	4%	6%
Waiheke High School	Waitemata and Gulf	Intermediate/Secondary	546	25	5%	4%	6%	4%	4%	3%	2%	3%
Mission Heights Junior College	Manukau	Composite	757	27	4%	0%	2%	1%	5%	3%	-	-
Papakura Normal Primary School	Manurewa-Papakura	Full Primary	630	25	4%	3%	3%	2%	-	-	-	-
Redhill Primary School	Manurewa-Papakura	Full Primary	85	3	4%	5%	<1%	<1%	-	-	-	-
Northcote Intermediate School	North Shore	Intermediate	235	9	4%	<1%	2%	3%	5%	2%	3%	2%
Wairau Intermediate School	North Shore	Intermediate	285	11	4%	4%	3%	4%	6%	5%	7%	4%
Mt Hobson Middle School	Orakei	Intermediate/Secondary	48	2	4%	7%	6%	-	-	-	-	-
Lincoln Heights School	Waitakere	Full Primary	125	5	4%	2%	0%	0%	-	-	-	-
Liston College	Waitakere	Intermediate/Secondary	819	32	4%	1%	3%	-	-	-	-	-
Waitakere School	Waitakere	Full Primary	150	6	4%	-	-	-	-	-	-	-
Auckland Grammar School	Waitemata and Gulf	Secondary	1600	62	4%	3%	3%	4%	4%	4%	3%	2%
Green Bay Primary	Whau	Full Primary	214	8	4%	5%	2%	3%	-	-	-	-
Immanuel Christian School	Whau	Composite	50	2	4%	0%	2%	0%	-	2%	1%	1%
Marina View School	Albany	Full Primary	281	7	3%	2%	-	-	-	-	-	-
Whenuapai School	Albany	Full Primary	260	8	3%	-	-	-	-	-	-	-
Balmoral School	Albert-Eden-Roskill	Full Primary	804	21	3%	3%	4%	4%	0%	-	-	-



School Name	Ward	School Type	School Roll Eligible To Cycle	No. of Cycles Counted	Cyclists as share of those eligible ⁹								
					2014	2013	2012	2011	2010	2009	2008	2007	
Pukekohe Intermediate	Franklin	Intermediate	635	17	3%	-	1%	2%					
Ramarama School	Franklin	Full Primary	40	1	3%	0%	1%	2%					
Waiau Pa School	Franklin	Full Primary	70	2	3%	0%	2%	-					
Pakuranga Intermediate School	Howick	Intermediate	312	8	3%	1%	3%	-	-	-	-	-	-
Papakura South School	Manurewa-Papakura	Full Primary	90	3	3%	-	0%	0%	-	-	-	-	-
Onehunga High School	Maungakiekie-Tamaki	Secondary	1200	37	3%	1%	-	-	1%	1%	-	-	-
Birkdale Intermediate School	North Shore	Intermediate	410	11	3%	5%	2%	2%	2%	1%	<1%	-	-
Westlake Boys' High School	North Shore	Secondary	2291	63	3%	3%	2%	4%	3%	2%	<1%	2%	2%
Henderson High School	Waitakere	Secondary	640	21	3%	1%	1%	-	-	-	-	-	-
Blockhouse Bay Intermediate	Whau	Intermediate	802	24	3%	3%	5%	3%	-	3%	4%	4%	4%
Wesley Intermediate School	Whau	Intermediate	134	4	3%	4%	1%	-	-	-	-	-	-
Albany Junior High School	Albany	Intermediate/Secondary	1045	20	2%	2%	5%	-	-	-	-	-	-
Stella Maris Primary School	Albany	Full Primary	280	6	2%	2%	0%	1%	-	-	-	-	-
Hebron Christian College	Albert-Eden-Roskill	Composite	230	5	2%	5%	1%	-	-	-	-	-	-
Kowhai Intermediate School	Albert-Eden-Roskill	Intermediate	400	9	2%	2%	3%	5%	5%	6%	6%	6%	6%
Te Kura Kaupapa o Nga Maungarongo	Albert-Eden-Roskill	Composite	280	5	2%	-	-	-	-	-	-	-	-
-Clevedon School	Franklin	Full Primary	341	5	2%	0%	1%	-					
View Road School	Franklin	Full Primary	136	2	2%	5%	5%	3%					
Waiuku College	Franklin	Secondary	950	17	2%	1%	<1%	-					
Botany Downs Secondary College	Howick	Secondary	1800	42	2%	2%	2%	-	-	-	-	-	-
Howick Intermediate School	Howick	Intermediate	376	6	2%	<1%	<1%	-	-	-	-	-	-
Papatoetoe Intermediate School	Manukau	Intermediate	727	14	2%	3%	2%	2%	2%	1%	-	-	-



School Name	Ward	School Type	School Roll Eligible To Cycle	No. of Cycles Counted	Cyclists as share of those eligible ⁹							
					2014	2013	2012	2011	2010	2009	2008	2007
ACG Strathallan	Manurewa-Papakura	Composite	891	17	2%	2%	1%	-	-	-	-	-
Drury School	Manurewa-Papakura	Full Primary	171	4	2%	1%	2%	4%	-	-	-	-
St Mary's Catholic School (Papakura)	Manurewa-Papakura	Full Primary	122	3	2%	1%	1%	2%	-	-	-	-
Ellerslie School	Maungakiekie-Tamaki	Full Primary	250	5	2%	1%	0%	1%	-	-	-	-
Somerville Intermediate	Maungakiekie-Tamaki	Intermediate	965	24	2%	-	-	-	-	-	-	-
Glenfield Intermediate School	North Shore	Intermediate	329	7	2%	1%	0%	1%	1%	3%	2%	4%
Rosmini College	North Shore	Intermediate/Secondary	1150	22	2%	3%	3%	5%	3%	3%	4%	3%
Churchill Park School	Orakei	Full Primary	146	3	2%	10%	6%	2%	-	-	-	-
Selwyn College	Orakei	Secondary	932	15	2%	3%	2%	2%	2%	2%	1%	-
St Heliers School	Orakei	Full Primary	728	13	2%	1%	2%	-	-	-	-	-
Waitoki School	Rodney	Full Primary	91	2	2%	5%	-	-	-	-	-	-
Saint Kentigern Primary School (Remuera)	Orakei	Full Primary	200	4	2%	1%	-	-	-	-	-	-
Bruce McLaren Intermediate	Waitakere	Intermediate	238	4	2%	2%	1%	<1%	3%	4%	2%	2%
Rutherford College	Waitakere	Secondary	1400	34	2%	3%	4%	-	-	-	-	-
Te Kura Kaupapa Māori o Hoani Waititi Marae	Waitakere	Composite	155	3	2%	0%	0%	2%	2%	0%	0%	-
Kadimah College	Waitemata and Gulf	Full Primary	170	4	2%	1%	2%	8%	-	-	-	-
St Joseph's School (Grey Lynn)	Waitemata and Gulf	Full Primary	90	2	2%	0%	-	0%	-	-	-	-
Avondale intermediate	Whau	Intermediate	299	7	2%	-	1%	-	-	-	-	-
Albany Senior High School	Albany	Secondary	727	4	1%	<1%	1%	1%	2%	-	-	-
Kristin School	Albany	Composite	1548	9	1%	<1%	<1%	<1%	<1%	1%	-	-



School Name	Ward	School Type	School Roll Eligible To Cycle	No. of Cycles Counted	Cyclists as share of those eligible ⁹							
					2014	2013	2012	2011	2010	2009	2008	2007
Murray's Bay Intermediate	Albany	Intermediate	931	10	1%	-	1%	2%	3%	2%	2%	5%
Lynfield College	Albert-Eden-Roskill	Secondary	1804	11	1%	<1%	<1%	<1%	<1%	1%	<1%	1%
Mount Albert Grammar School	Albert-Eden-Roskill	Secondary	2730	29	1%	1%	2%	-	-	-	-	-
Mt Roskill Intermediate School	Albert-Eden-Roskill	Intermediate	559	6	1%	2%	3%	2%	4%	-	2%	2%
Our Lady Sacred Heart School (Epsom)	Albert-Eden-Roskill	Full Primary	215	3	1%	3%	-	-	-	-	-	-
St Joseph's School (Pukekohe)	Franklin	Full Primary	279	3	1%	1%	0%	2%				
Elim Christian Character - Junior Campus	Howick	Full Primary	370	3	1%	-	1%	-	-	-	-	-
Elim Christian College - Senior Campus	Howick	Intermediate/Secondary	606	8	1%	2%	3%	-	-	-	-	-
Macleans College	Howick	Secondary	2560	16	1%	1%	1%	<1%	-	2%	1%	-
Pakuranga College	Howick	Secondary	2000	25	1%	-	-	-	2%	2%	3%	-
Sancta Maria College	Howick	Intermediate/Secondary	1000	7	1%	<1%	1%	1%	1%	1%	1%	2%
St Kentigern College	Howick	Intermediate/Secondary	1800	12	1%	0%	-	<1%	<1%	1%	-	-
Auckland Seventh Day Adventist High School	Manukau	Secondary	212	2	1%	0%	1%	<1%	-	-	-	-
Holy Cross School (Papatoetoe)	Manukau	Full Primary	230	2	1%	1%	0%	-	-	-	-	-
Kedgley Intermediate	Manukau	Intermediate	735	5	1%	1%	1%	1%	2%	2%	-	-
Papatoetoe High School	Manukau	Secondary	1600	15	1%	-	-	-	-	-	-	-
Sir Douglas Bader Intermediate School	Manukau	Intermediate	175	2	1%	1%	-	<1%	<1%	0%	<1%	0%
Greemeadows Intermediate School	Manurewa-Papakura	Intermediate	347	3	1%	2%	3%	4%	2%	0%	5%	3%
Papakura High School	Manurewa-Papakura	Secondary	900	5	1%	<1%	1%	<1%	1%	0%	<1%	<1%
Rosehill College	Manurewa-Papakura	Secondary	1775	25	1%	1%	2%	1%	1%	1%	1%	<1%



School Name	Ward	School Type	School Roll Eligible To Cycle	No. of Cycles Counted	Cyclists as share of those eligible ⁹								
					2014	2013	2012	2011	2010	2009	2008	2007	
Waimahia Intermediate (Weymouth Intermediate)	Manurewa-Papakura	Intermediate	270	4	1%	-	-	-	-	-	-	-	-
Royal Oak Intermediate	Maungakiekie-Tamaki	Intermediate	378	3	1%	1%	-	-	-	3%	2%	2%	
Stanhope Road Primary	Maungakiekie-Tamaki	Full Primary	210	2	1%	<1%	0%	<1%	-	-	-	-	
Tamaki College	Maungakiekie-Tamaki	Secondary	550	3	1%	0%	-	-	0%	0%	<1%	<1%	
Tamaki Primary School	Maungakiekie-Tamaki	Full Primary	230	2	1%	1%	-	-	-	-	-	-	
Te Kura Kaupapa Māori o Puau Te Moananui-a-Kiwa	Maungakiekie-Tamaki	Composite	143	2	1%	0%	-	0%	-	-	-	-	
Northcote College	North Shore	Secondary	1157	6	1%	1%	1%	<1%	<1%	0%	-	-	
Glendowie College	Orakei	Secondary	1099	11	1%	1%	1%	1%	1%	1%	-	-	
Michael Park School	Orakei	Composite	422	6	1%	-	-	-	-	-	-	-	
Orakei School	Orakei	Full Primary	176	1	1%	1%	-	-	-	-	-	-	
Sacred Heart College	Orakei	Intermediate/Secondary	1200	10	1%	1%	-	1%	-	1%	1%	-	
Parakai School	Rodney	Full Primary	145	2	1%	-	-	-	-	-	-	-	
Tomarata School	Rodney	Full Primary	155	2	1%	0%	0%	0%	-	-	-	-	
Taupaki School	Rodney	Full Primary	79	1	1%	4%	-	<1%	-	-	-	-	
Waimauku School	Rodney	Full Primary	620	6	1%	0%	0%	0%	-	-	-	-	
ACG Sunderland	Waitakere	Composite	262	3	1%	3%	2%	<1%	4%	2%	1%	-	
Colwill School	Waitakere	Full Primary	230	2	1%	1%	0%	<1%	-	-	-	-	
Glen Eden Intermediate School	Waitakere	Intermediate	1014	15	1%	3%	1%	1%	1%	3%	-	-	
Rangeview Intermediate	Waitakere	Intermediate	680	10	1%	4%	3%	-	-	-	-	-	
West Harbour School	Waitakere	Full Primary	190	2	1%	0%	-	-	-	-	-	-	



School Name	Ward	School Type	School Roll Eligible To Cycle	No. of Cycles Counted	Cyclists as share of those eligible ⁹							
					2014	2013	2012	2011	2010	2009	2008	2007
Avondale College	Whau	Secondary	2643	17	1%	1%	-	-	-	1%	1%	-
Green Bay High School	Whau	Secondary	1350	8	1%	1%	1%	1%	1%	1%	1%	1%
Pinehurst School	Albany	Composite	700	3	<1%	1%	1%	<1%	1%	0%	1%	1%
Rangitoto College	Albany	Secondary	3100	8	<1%	<1%	<1%	1%	1%	1%	<1%	1%
Diocesan School for Girls	Albert-Eden-Roskill	Composite	1322	6	<1%	<1%	<1%	<1%	<1%	0%	<1%	0%
Epsom Girls' Grammar School	Albert-Eden-Roskill	Secondary	2217	5	<1%	0%	<1%	0%	<1%	0%	<1%	-
Howick College	Howick	Secondary	1800	1	<1%	<1%	0%	-	-	-	-	-
Mangere College	Manukau	Secondary	756	2	<1%	<1%	<1%	1%	1%	1%	-	-
Otahuhu Intermediate School	Manukau	Intermediate	334	1	<1%	0%	2%	0%	0%	-	1%	1%
Southern Cross Campus	Manukau	Composite	740	2	<1%	<1%	-	-	0%	0%	0%	-
Alfriston School	Manurewa-Papakura	Full Primary	1500	5	<1%	0%	0%	-	-	-	-	-
James Cook High School	Manurewa-Papakura	Secondary	1260	5	<1%	<1%	<1%	-	-	-	-	-
One Tree Hill College	Maungakiekie-Tamaki	Secondary	997	2	<1%	1%	-	-	<1%	0%	-	-
Birkenhead College	North Shore	Secondary	740	1	<1%	<1%	<1%	<1%	1%	-	-	-
Carmel College	North Shore	Intermediate/Secondary	1045	2	<1%	<1%	<1%	<1%	0%	0%	<1%	0%
Glenfield College	North Shore	Secondary	700	2	<1%	1%	-	-	1%	1%	-	-
Westlake Girls' High School	North Shore	Secondary	2197	3	<1%	<1%	<1%	<1%	<1%	0%	<1%	<1%
Mahurangi College	Rodney	Intermediate/Secondary	1350	3	<1%	0%	<1%	-	-	-	-	-
Birdwood School	Waitakere	Full Primary	203	1	<1%	2%	0%	0%	-	-	-	-
Massey High School	Waitakere	Secondary	2200	7	<1%	1%	-	-	<1%	1%	1%	1%
ACG Parnell College	Waitemata and Gulf	Composite	830	3	<1%	<1%	-	1%	1%	-	0%	-
Auckland International College	Waitemata and Gulf	Secondary	299	1	<1%	1%	0%	0%	0%	0%	0%	-



School Name	Ward	School Type	School Roll Eligible To Cycle	No. of Cycles Counted	Cyclists as share of those eligible ⁹							
					2014	2013	2012	2011	2010	2009	2008	2007
Marist College	Waitemata and Gulf	Intermediate/Secondary	760	1	<1%	0%	<1%	0%	<1%	0%	-	-
Parnell District School	Waitemata and Gulf	Full Primary	485	2	<1%	2%	3%	1%	-	-	-	-
Kelston Boys' High School	Whau	Secondary	857	2	<1%	<1%	<1%	<1%	<1%	0%	1%	1%
City Impact Church School	Albany	Composite	169	0	0%	0%	0%	0%	-	-	-	-
Dairy Flat School	Albany	Full Primary	253	0	0%	0%	0%	0%	-	-	-	-
Te Kura Kaupapa Māori o Te Raki Paewhenua	Albany	Composite	90	0	0%	-	0%	0%	-	-	-	-
The Corelli International Academic School of the Arts	Albany	Composite	71	0	0%	0%	0%	-	-	-	-	-
Balmoral SDA School	Albert-Eden-Roskill	Full Primary	95	0	0%	0%	2%	2%	-	-	-	-
Christ the King Catholic School	Albert-Eden-Roskill	Full Primary	0	0	0%	0%	0%	0%	-	-	-	-
Dilworth School	Albert-Eden-Roskill	Full Primary	626	0	0%	-	0%	-	-	-	-	-
Ficino School	Albert-Eden-Roskill	Full Primary	107	0	0%	0%	0%	0%	-	-	-	-
Marcellin College	Albert-Eden-Roskill	Intermediate/Secondary	645	0	0%	0%	0%	<1%	0%	0%	1%	-
St Cuthbert's College	Albert-Eden-Roskill	Composite	1400	0	0%	4%	<1%	-	-	-	-	-
St Therese School (Three Kings)	Albert-Eden-Roskill	Full Primary	129	0	0%	0%	-	0%	-	-	-	-
Ararimu School	Franklin	Full Primary	128	0	0%	0%	0%	0%				
Ardmore School	Franklin	Full Primary	344	0	0%	0%	0%	0%				
Awhitu District School	Franklin	Full Primary	108	0	0%	5%	0%	2%				
Bombay School	Franklin	Full Primary	361	0	0%	0%	0%	0%				
Glenbrook School	Franklin	Full Primary	262	0	0%	0%	0%	0%				
Hunua School	Franklin	Full Primary	104	0	0%	0%	0%	-				



School Name	Ward	School Type	School Roll Eligible To Cycle	No. of Cycles Counted	Cyclists as share of those eligible ⁹							
					2014	2013	2012	2011	2010	2009	2008	2007
KingsGate School	Franklin	Full Primary	56	0	0%	0%	0%	0%				
Paerata School	Franklin	Full Primary	83	0	0%	0%	-	-				
Pukehoke High School	Franklin	Intermediate/Secondary	1600	0	0%	-	-	-				
Pukekohe Christian Shool	Franklin	Composite	162	0	0%	1%	<1%	-				
Waipipi School	Franklin	Full Primary	130	0	0%	0%	0%	-				
Wesley College	Franklin	Secondary	340	0	0%	-	-	-				
Westmount School	Franklin	Composite	159	0	0%	-	-	-				
Edgewater College	Howick	Secondary	780	0	0%	1%	1%	2%	2%	2%	2%	-
Tyndale Park Christian School	Howick	Composite	125	0	0%	0%	0%	0%	0%	0%	0%	0%
Al-Madinah School	Manukau	Composite	517	0	0%	0%	0%	0%	0%	0%	0%	-
Aorere College	Manukau	Secondary	1588	0	0%	0%	0%	0%	0%	0%	-	-
De La Salle College	Manukau	Intermediate/Secondary	1015	0	0%	<1%	-	-	-	<1%	<1%	0%
Ferguson Intermediate School	Manukau	Intermediate	484	0	0%	0%	0%	0%	-	-	0%	-
Kia Aroha College	Manukau	Intermediate/Secondary	267	0	0%	<1%	1%	0%	-	-	0%	-
King's College	Manukau	Secondary	950	0	0%	0%	0%	-	-	-	-	-
Koru School	Manukau	Full Primary	530	0	0%	0%	0%	-	-	-	-	-
Mangere Central School	Manukau	Full Primary	430	0	0%	0%	0%	-	-	-	-	-
McAuley High School	Manukau	Secondary	751	0	0%	0%	0%	0%	0%	0%	0%	0%
Otahuhu College	Manukau	Secondary	1285	0	0%	0%	0%	0%	-	0%	0%	0%
Pacific Christian School	Manukau	Full Primary	75	0	0%	0%	-	0%	-	-	-	-
Redoubt North School	Manukau	Full Primary	619	0	0%	0%	-	0%	-	-	-	-



School Name	Ward	School Type	School Roll Eligible To Cycle	No. of Cycles Counted	Cyclists as share of those eligible ⁹							
					2014	2013	2012	2011	2010	2009	2008	2007
Robertson Road School	Manukau	Full Primary	494	0	0%	0%	-	-	-	-	-	-
South Auckland SDA School	Manukau	Full Primary	296	0	0%	0%	0%	-	-	-	-	-
St Joseph's Otahuhu	Manukau	Full Primary	297	0	0%	0%	-	0%	-	-	-	-
St Joseph's School (Onehunga)	Manukau	Full Primary	228	0	0%	0%	-	0%	-	-	-	-
St Mary MacKillop Catholic School	Manukau	Full Primary	305	0	0%	0%	0%	0%	-	-	-	-
Tangaroa College	Manukau	Secondary	930	0	0%	<1%	-	0%	0%	-	0%	-
Te Kura Kaupapa Māori a Rohe o Mangere	Manukau	Composite	180	0	0%	1%	0%	1%	-	-	-	-
Te Kura Māori o Ngā Tapuwae	Manukau	Composite	272	0	0%	1%	2%	-	-	-	-	-
Viscount School	Manukau	Full Primary	670	0	0%	0%	-	-	-	-	-	-
Wiri Central School	Manukau	Full Primary	466	0	0%	0%	-	0%	-	-	-	-
Zayed College for Girls	Manukau	Intermediate/Secondary	103	0	0%	0%	0%	0%	-	-	-	-
Alfriston College	Manurewa-Papakura	Secondary	300	0	0%	1%	1%	1%	1%	1%	2%	-
Brookby School	Manurewa-Papakura	Full Primary	110	0	0%	0%	0%	-	-	-	-	-
Drury Christian School	Manurewa-Papakura	Composite	40	0	0%	0%	0%	-	-	-	-	-
Edmund Hillary School	Manurewa-Papakura	Full Primary	144	0	0%	0%	0%	0%	-	-	-	-
Karaka School	Manurewa-Papakura	Full Primary	223	0	0%	0%	0%	-	-	-	-	-
Mansell Senior School	Manurewa-Papakura	Intermediate	135	0	0%	0%	1%	0%	0%	-	-	-
Manukau Christian School	Manurewa-Papakura	Full Primary	30	0	0%	0%	0%	0%	0%	2%	0%	4%
Manurewa High School	Manurewa-Papakura	Secondary	1925	0	0%	<1%	0%	<1%	1%	0%	1%	2%
Orere School	Manurewa-Papakura	Full Primary	46	0	0%	0%	-	-	-	-	-	-
Paparimu School	Manurewa-Papakura	Full Primary	26	0	0%	5%	-	8%	-	-	-	-



School Name	Ward	School Type	School Roll Eligible To Cycle	No. of Cycles Counted	Cyclists as share of those eligible ⁹							
					2014	2013	2012	2011	2010	2009	2008	2007
Sir Edmund Hillary Collegiate	Manurewa-Papakura	Composite	1200	0	0%	-	0%	0%	-	-	-	-
St Anne's Catholic School	Manurewa-Papakura	Full Primary	560	0	0%	<1%	0%	0%	-	-	-	-
Te Hihi School	Manurewa-Papakura	Full Primary	195	0	0%	0%	-	0%	-	-	-	-
Te Kura Akonga O Manuwera	Manurewa-Papakura	Full Primary	68	0	0%	-	-	-	-	-	-	-
Te Wharekura O Manurewa	Manurewa-Papakura	Secondary	24	0	0%	-	-	-	-	-	-	-
Bailey Road School	Maungakiekie-Tamaki	Full Primary	0	0	0%	0%	0%	0%	-	-	-	-
Carey College	Maungakiekie-Tamaki	Composite	25	0	0%	0%	-	-	0%	0%	-	-
Destiny School	Maungakiekie-Tamaki	Full Primary	180	0	0%	0%	0%	0%	-	-	-	-
Glen Innes School	Maungakiekie-Tamaki	Full Primary	199	0	0%	1%	0%	-	-	-	-	-
Glenbrae School	Maungakiekie-Tamaki	Full Primary	88	0	0%	0%	0%	-	-	-	-	-
Golden Grove School	Maungakiekie-Tamaki	Full Primary	35	0	0%	0%	0%	0%	-	-	-	-
Panmure Bridge School	Maungakiekie-Tamaki	Full Primary	206	0	0%	0%	-	-	-	-	-	-
Panmure District School	Maungakiekie-Tamaki	Full Primary	132	0	0%	0%	0%	1%	-	-	-	-
Pt England School	Maungakiekie-Tamaki	Full Primary	610	0	0%	0%	0%	0%	-	-	-	-
Ruapotaka School	Maungakiekie-Tamaki	Full Primary	200	0	0%	0%	0%	-	-	-	-	-
St Patrick's School (Panmure)	Maungakiekie-Tamaki	Full Primary	0	0	0%	0%	0%	-	-	-	-	-
St Pius X School (Glen Innes)	Maungakiekie-Tamaki	Full Primary	140	0	0%	0%	0%	1%	-	-	-	-
Sylvia Park School	Maungakiekie-Tamaki	Full Primary	422	0	0%	0%	-	0%	-	-	-	-
Hato Petera College	North Shore	Secondary	116	0	0%	-	0%	-	-	-	-	-
Saint Mary's School	North Shore	Full Primary	400	0	0%	-	0%	0%	-	-	-	-
Westminster Christian School	North Shore	Full Primary	214	0	0%	0%	0%	0%	-	-	-	-
Baradene College of the Sacred Heart	Orakei	Intermediate/Secondary	1122	0	0%	0%	0%	0%	0%	0%	<1%	0%



School Name	Ward	School Type	School Roll Eligible To Cycle	No. of Cycles Counted	Cyclists as share of those eligible ⁹							
					2014	2013	2012	2011	2010	2009	2008	2007
Glen Taylor School	Orakei	Full Primary	240	0	0%	1%	0%	-	-	-	-	-
King's Preparatory School	Orakei	Full Primary	430	0	0%	0%	<1%	-	-	-	-	-
Saint Kentigern Girls' School	Orakei	Full Primary	176	0	0%	0%	0%	0%	0%	-	-	-
Ahuroa School	Rodney	Full Primary	77	0	0%	0%	0%	0%	-	-	-	-
Hare Krishna School	Rodney	Full Primary	96	0	0%	0%	0%	0%	-	-	-	-
Kaipara College	Rodney	Secondary	620	0	0%	0%	-	0%	0%	-	0%	<1%
Kaukapakapa School	Rodney	Full Primary	248	0	0%	0%	0%	0%	-	-	-	-
Living Way Learning Centre	Rodney	Composite	19	0	0%	0%	0%	5%	3%	9%	3%	24%
Mahurangi Christian School	Rodney	Full Primary	37	0	0%	0%	-	-	-	-	-	-
Pakiri School	Rodney	Full Primary	17	0	0%	-	-	-	-	-	-	-
Riverhead School	Rodney	Full Primary	289	0	0%	-	-	-	-	-	-	-
Rodney College	Rodney	Secondary	360	0	0%	0%	0%	0%	0%	0%	0%	2%
Tauhoa School	Rodney	Full Primary	46	0	0%	0%	0%	0%	-	-	-	-
Wainui School	Rodney	Full Primary	211	0	0%	0%	1%	0%	-	-	-	-
Waioneke School	Rodney	Full Primary	89	0	0%	0%	0%	0%	-	-	-	-
Woodhill School	Rodney	Full Primary	80	0	0%	0%	-	-	-	-	-	-
Don Buck Primary School	Waitakere	Full Primary	220	0	0%	0%	0%	0%	-	-	-	-
Holy Cross School (Henderson)	Waitakere	Full Primary	376	0	0%	<1%	0%	0%	-	-	-	-
Massey Primary School	Waitakere	Full Primary	400	0	0%	<1%	-	-	-	-	-	-
Ngā Kakano Christian Reo Rua Kura	Waitakere	Composite	91	0	0%	0%	6%	2%	-	6%	7%	7%
Royal Road School	Waitakere	Full Primary	269	0	0%	0%	0%	0%	-	-	-	-
St Dominic's College	Waitakere	Intermediate/Secondary	835	0	0%	0%	0%	0%	-	<1%	<1%	<1%



School Name	Ward	School Type	School Roll Eligible To Cycle	No. of Cycles Counted	Cyclists as share of those eligible ⁹							
					2014	2013	2012	2011	2010	2009	2008	2007
Titirangi Rudolf Steiner School	Waitakere	Full Primary	260	0	0%	0%	0%	0%	0%	0%	0%	0%
Waitakere Seventh Day Adventist School	Waitakere	Full Primary	35	0	0%	-	-	-	-	-	-	-
ACG Senior College	Waitemata and Gulf	Intermediate/Secondary	302	0	0%	0%	4%	0%	1%	-	0%	-
Auckland Girls' Grammar School	Waitemata and Gulf	Secondary	1400	0	0%	0%	<1%	<1%	0%	0%	0%	<1%
Kaitoke School (Claris)	Waitemata and Gulf	Full Primary	29	0	0%	8%	-	-	-	-	-	-
St Mary's College	Waitemata and Gulf	Intermediate/Secondary	944	0	0%	<1%	<1%	0%	0%	0%	-	-
St Paul's College	Waitemata and Gulf	Intermediate/Secondary	268	0	0%	0%	-	0%	-	0%	-	-
St Peter's College	Waitemata and Gulf	Intermediate/Secondary	1200	0	0%	-	-	-	-	-	-	-
Glenavon School	Whau	Full Primary	215	0	0%	0%	0%	0%	-	-	-	-
Kelston Girls' High School	Whau	Secondary	678	0	0%	0%	0%	0%	0%	0%	0%	0%
Kelston Intermediate	Whau	Intermediate	260	0	0%	-	1%	-	-	-	-	-
St Mary's School (Avondale)	Whau	Full Primary	200	0	0%	0%	-	0%	-	-	-	-



2.7 School Scooter Count Summary

- Based on feedback from schools participating in the 2013 bike shed count, it was decided to add a (non-motorised) scooter count to the 2014 survey.

Scooter Count Background Information

- A total of 302 full primary, intermediate, secondary and composite schools throughout the Auckland region were contacted by Gravitas. Of the 263 schools that responded to the survey (87 per cent), most have no policies that restrict students scootering to school.¹⁰
- Most schools conducted their count on Tuesday the 4th of March, 2013.

Scooter Count Key Points

- Of those students from the surveyed schools eligible to scooter, on average one per cent are scootering to their schools.
- This year, 8 schools (3 per cent) reported at least 10 per cent of students scootering to school. The following schools reported more than 20 per cent of students scootering to school:
 - Beachlands School (Franklin ward) (40 per cent)
 - Timatanga Community School (Albany ward) (21 per cent)
- Of the 263 surveyed schools, 179 (68 per cent) reported that no students had scootered to school on the designated count day.

¹⁰ These exceptions are detailed in the ward level reports. Most relate to full primary schools restricting younger students from scootering or having scooters banned from school.



Table 2.19 illustrates the rates of scootering to school at different school levels in 2014. Rates of scootering to school were the highest at intermediate schools (an average of 3 per cent). Intermediate/secondary and secondary schools reported the lowest number of students scootering to schools (an average of less than 1 per cent).

Table 2.19: Average Scootering Rates by School Level
2014 (n)

<i>Year Levels</i>	<i>Number of Schools Responded (n)</i>	<i>Average School Roll Eligible To Scooter</i>	<i>Average Number of Scooters Counted</i>	<i>Average Scootering Rate per School</i>
Intermediate	36	427	12	3%
Full Primary	121	255	5	2%
Composite	30	416	1	1%
Intermediate/Secondary	25	816	3	<1%
Secondary	51	1210	<1	<1%
Regional Total	263	536	4	1%



- Table 2.20 illustrates the rates of cycling to school within each of the Auckland wards. Rates of scootering to school are highest among schools in Franklin ward (4 per cent). Rates of cycling among Franklin Ward intermediate schools are particularly high (14 per cent of students scootering).

**Table 2.20: Summary Table of School Scooter Count by Ward
2007-2014 (n)**

<i>Ward</i>	<i>2014</i>			<i>Average Scooter Rate Per Ward</i>
	<i>Number of Schools Responding (n)</i>	<i>Average School Roll Eligible To Scooter</i>	<i>Average Number of Scooters Counted</i>	<i>2014</i>
Franklin	24	277	10	4%
Albert-Eden-Roskill	21	727	15	2%
Albany	17	655	5	1%
Manurewa-Papakura	30	484	3	1%
Orakei	15	564	6	1%
Waitakere	22	523	3	1%
Howick	13	934	4	<1%
Manukau	33	571	2	<1%
Maungakiekie-Tamaki	22	309	1	<1%
North Shore	17	827	3	<1%
Rodney	20	242	<1	<1%
Waitemata & Gulf	17	507	2	<1%
Whau	12	670	3	<1%
Regional Total	263	536	4	1%



**Table 2.21: Summary Table of Average Scootering Rates by School Level and Ward
2014**

<i>Ward</i>	<i>School Type</i>					<i>All School Levels</i>
	<i>Composite</i>	<i>Full Primary</i>	<i>Intermediate</i>	<i>Intermediate/ Secondary</i>	<i>Secondary</i>	
Franklin	0%	4%	14%	0%	0%	4%
Albert-Eden-Roskill	0%	10%	6%	0%	<1%	2%
Albany	<1%	2%	1%	2%	0%	1%
Manurewa-Papakura	0%	2%	1%	-	0%	1%
Orakei	1%	3%	2%	<1%	0%	1%
Waitakere	<1%	1%	3%	<1%	0%	1%
Howick	0%	5%	2%	<1%	0%	<1%
Manukau	0%	<1%	1%	2%	0%	<1%
Maungakiekie-Tamaki	1%	<1%	0%	-	0%	<1%
North Shore	-	0%	2%	0%	<1%	<1%
Rodney	0%	<1%	-	<1%	0%	<1%
Waitemata & Gulf	<1%	2%	0%	<1%	0%	<1%
Whau	0%	2%	1%	-	<1%	<1%
Regional Total	<1%	2%	3%	<1%	<1%	1%

Note: A dash indicates no schools of this type responded to the survey for a ward.



The following table ranks the 263 schools from the highest share of scooters to the lowest.

Table 2.22: School Scooter Count by School

<i>School Name</i>	<i>Ward</i>	<i>School Type</i>	<i>School Roll Eligible To Scooter</i>	<i>No. of Scooters Counted</i>	<i>Scooters as share of those eligible¹¹</i>
					<i>2014</i>
Beachlands School	Franklin	Full Primary	245	98	40%
Timatanga Community School	Albany	Full Primary	19	4	21%
Hobsonville Point Primary School	Albany	Full Primary	83	14	17%
Kohia Terrace School	Albert-Eden-Roskill	Full Primary	337	49	15%
Pukekohe Intermediate	Franklin	Intermediate	635	89	14%
Balmoral School	Albert-Eden-Roskill	Full Primary	804	106	13%
Kowhai Intermediate School	Albert-Eden-Roskill	Intermediate	400	49	12%
Mt Hobson Middle School	Orakei	Intermediate/Secondary	48	5	10%
Pasadena Intermediate	Albert-Eden-Roskill	Intermediate	253	23	9%
Pukehoke North School	Franklin	Full Primary	195	16	8%
Papakura South School	Manurewa-Papakura	Full Primary	90	7	8%
Auckland Normal Intermediate	Albert-Eden-Roskill	Intermediate	735	53	7%
St Joseph's School (Pukekohe)	Franklin	Full Primary	279	20	7%
Stonefields School	Orakei	Full Primary	323	21	7%
Te Kura Kaupapa Maori o Waiuku	Franklin	Full Primary	17	1	6%
Reremoana Primary School	Manurewa-Papakura	Full Primary	357	20	6%

¹¹ This share is calculated by averaging the number of scooters counted over the total number of students eligible to scooter. The figure obtained is rounded to zero decimal places.



School Name	Ward	School Type	School Roll Eligible To Scooter	No. of Scooters Counted	Scooters as share of those eligible ¹¹
					2014
Northcote Intermediate School	North Shore	Intermediate	235	15	6%
Bruce McLaren Intermediate	Waitakere	Intermediate	238	14	6%
Waikowhai Intermediate School	Albert-Eden-Roskill	Intermediate	378	20	5%
Elim Christian Character - Junior Campus	Howick	Full Primary	370	18	5%
Mission Heights Junior College	Manukau	Intermediate/Secondary	757	40	5%
Papakura Normal School	Manurewa-Papakura	Full Primary	630	30	5%
Orakei School	Orakei	Full Primary	176	8	5%
Glenavon School	Whau	Full Primary	215	10	5%
View Road School	Franklin	Full Primary	136	5	4%
Conifer Grove School	Manurewa-Papakura	Full Primary	498	19	4%
Saint Heliers School	Orakei	Full Primary	728	28	4%
Glen Eden Intermediate School	Waitakere	Intermediate	1014	40	4%
Lincoln Heights School	Waitakere	Full Primary	410	15	4%
Waiheke Primary School	Waitemata and Gulf	Full Primary	206	8	4%
Marina View School	Albany	Full Primary	644	20	3%
Our Lady Sacred Heart School (Epsom)	Albert-Eden-Roskill	Full Primary	215	7	3%
Ramarama School	Franklin	Full Primary	40	1	3%
Sandspit Road School	Franklin	Full Primary	338	10	3%
Howick Intermediate School	Howick	Intermediate	376	10	3%
Pakuranga Intermediate School	Howick	Intermediate	312	10	3%
Waimahia Intermediate (Weymouth)	Manurewa-Papakura	Intermediate	270	9	3%



School Name	Ward	School Type	School Roll Eligible To Scooter	No. of Scooters Counted	Scooters as share of those eligible ¹¹
					2014
Intermediate)					
Takapuna Normal Intermediate School	North Shore	Intermediate	285	8	3%
Churchill Park School	Orakei	Full Primary	413	12	3%
Orewa College	Albany	Intermediate/Secondary	1560	25	2%
Silverdale Primary School	Albany	Full Primary	483	12	2%
Paerata School	Franklin	Full Primary	83	2	2%
Otahuhu Intermediate School	Manukau	Intermediate	334	6	2%
Glenbrae Primary School	Maungakiekie-Tamaki	Full Primary	88	2	2%
Tamaki Primary School	Maungakiekie-Tamaki	Full Primary	230	4	2%
Te Kura Kaupapa Maori O Puau Te Moananui-a-kiwa	Maungakiekie-Tamaki	Composite	143	3	2%
Glenfield Intermediate	North Shore	Intermediate	329	7	2%
Remuera Intermediate School	Orakei	Intermediate	952	16	2%
Waitoki School	Rodney	Full Primary	91	2	2%
Parnell District School	Waitemata and Gulf	Full Primary	485	12	2%
Blockhouse Bay Intermediate	Whau	Intermediate	802	18	2%
Murray's Bay Intermediate	Albany	Intermediate	931	7	1%
Clevedon School	Franklin	Full Primary	341	2	1%
Farm Cove Intermediate	Howick	Intermediate	613	8	1%
Kedgley Intermediate	Manukau	Intermediate	735	5	1%
Mangere Central School	Manukau	Full Primary	430	3	1%
Belmont Intermediate School	North Shore	Intermediate	541	3	1%



School Name	Ward	School Type	School Roll Eligible To Scooter	No. of Scooters Counted	Scooters as share of those eligible ¹¹
					2014
Birkdale Intermediate	North Shore	Intermediate	410	5	1%
Westminster Christian School	North Shore	Full Primary	541	3	1%
Michael Park School	Orakei	Composite	422	5	1%
Saint Kentigern Primary School	Orakei	Full Primary	200	1	1%
Mahurangi College	Rodney	Intermediate/Secondary	1350	2	1%
Liston College	Waitakere	Intermediate/ Secondary	819	5	1%
Te Kura Kaupapa Maori o Hoani Waititi Marae	Waitakere	Composite	155	1	1%
Avondale intermediate	Whau	Intermediate	299	4	1%
Green Bay Primary	Whau	Full Primary	493	6	1%
Kristin School	Albany	Composite	1548	2	<1%
Pinehurst School	Albany	Composite	700	2	<1%
Lynfield College	Albert-Eden-Roskill	Secondary	1804	1	<1%
Elim Christian College - Senior Campus	Howick	Intermediate/Secondary	606	2	<1%
Papatoetoe Intermediate School	Manukau	Intermediate	727	1	<1%
Greenmeadows Intermediate School	Manurewa-Papakura	Intermediate	347	1	<1%
Sylvia Park School	Maungakiekie-Tamaki	Full Primary	422	2	<1%
Northcote College	North Shore	Secondary	1157	2	<1%
Takapuna Grammar School	North Shore	Secondary	1650	6	<1%
Sacred Heart College	Orakei	Intermediate/Secondary	1200	1	<1%
ACG Parnell College	Waitemata and Gulf	Composite	830	4	<1%
Marist College	Waitemata and Gulf	Intermediate/Secondary	760	1	<1%



School Name	Ward	School Type	School Roll Eligible To Scooter	No. of Scooters Counted	Scooters as share of those eligible ¹¹
					2014
St Mary's College	Waitemata and Gulf	Intermediate/Secondary	944	2	<1%
Green Bay High School	Whau	Secondary	1350	1	<1%
Albany Senior High School	Albany	Secondary	727	0	0%
City Impact Church School	Albany	Composite	169	0	0%
Dairy Flat School	Albany	Full Primary	253	0	0%
Rangitoto College	Albany	Secondary	3100	0	0%
Stella Maris Primary School	Albany	Full Primary	280	0	0%
The Corelli International Academic School of the Arts	Albany	Composite	71	0	0%
Whenuapai School	Albany	Full Primary	473	0	0%
Te Kura Kaupapa Māori o Te Raki Paewhenua	Albany	Composite	90	0	0%
Albany Junior High School	Albany	Intermediate/Secondary	0	0	0%
Balmoral Seventh Day Adventist School	Albert-Eden-Roskill	Full Primary	95	0	0%
Christ the King Catholic School	Albert-Eden-Roskill	Full Primary	0	0	0%
Dilworth School	Albert-Eden-Roskill	Composite	626	0	0%
Diocesan School for Girls	Albert-Eden-Roskill	Composite	1322	0	0%
Epsom Girls' Grammar	Albert-Eden-Roskill	Secondary	2217	0	0%
Ficino School	Albert-Eden-Roskill	Full Primary	107	0	0%
Hebron Christian College	Albert-Eden-Roskill	Composite	230	0	0%
Marcellin College	Albert-Eden-Roskill	Intermediate/Secondary	645	0	0%



School Name	Ward	School Type	School Roll Eligible To Scooter	No. of Scooters Counted	Scooters as share of those eligible ¹¹
					2014
Mount Albert Grammar School	Albert-Eden-Roskill	Secondary	2730	0	0%
Mt Roskill Intermediate School	Albert-Eden-Roskill	Intermediate	559	0	0%
St Cuthbert's College	Albert-Eden-Roskill	Composite	1400	0	0%
St Therese School	Albert-Eden-Roskill	Full Primary	129	0	0%
Te Kura Kaupapa o Nga Maungarongo	Albert-Eden-Roskill	Composite	280	0	0%
Ararimu School	Franklin	Full Primary	128	0	0%
Ardmore School	Franklin	Full Primary	344	0	0%
Awhitu District School	Franklin	Full Primary	108	0	0%
Bombay School	Franklin	Full Primary	361	0	0%
Glenbrook School	Franklin	Full Primary	262	0	0%
Hunua School	Franklin	Full Primary	104	0	0%
KingsGate School	Franklin	Full Primary	56	0	0%
Pukehoke High School	Franklin	Intermediate/Secondary	1600	0	0%
Pukekohe Christian Shool	Franklin	Composite	162	0	0%
Waiau Pa School	Franklin	Full Primary	70	0	0%
Waipipi School	Franklin	Full Primary	130	0	0%
Waiuku College	Franklin	Secondary	950	0	0%
Wesley College	Franklin	Secondary	340	0	0%
Westmount School	Franklin	Composite	159	0	0%
Botany Downs Secondary College	Howick	Secondary	1800	0	0%
Edgewater College	Howick	Secondary	780	0	0%
Howick College	Howick	Secondary	1800	0	0%



School Name	Ward	School Type	School Roll Eligible To Scooter	No. of Scooters Counted	Scooters as share of those eligible ¹¹
					2014
Macleans College	Howick	Secondary	2560	0	0%
Pakuranga College	Howick	Secondary	0	0	0%
Sancta Maria College	Howick	Intermediate/Secondary	1000	0	0%
Tyndale Park Christian School	Howick	Composite	125	0	0%
Al-Madinah School	Manukau	Composite	517	0	0%
Aorere College	Manukau	Secondary	1588	0	0%
Auckland Seventh Day Adventist High School	Manukau	Secondary	212	0	0%
De La Salle College	Manukau	Intermediate/Secondary	1015	0	0%
Ferguson Intermediate	Manukau	Intermediate	484	0	0%
Holy Cross School (Papatoetoe)	Manukau	Full Primary	230	0	0%
Kia Aroha College	Manukau	Intermediate/Secondary	267	0	0%
King's College	Manukau	Secondary	950	0	0%
Koru School	Manukau	Full Primary	530	0	0%
Mangere College	Manukau	Secondary	756	0	0%
McAuley High School	Manukau	Secondary	751	0	0%
Otahuhu College	Manukau	Secondary	1285	0	0%
Pacific Christian School	Manukau	Full Primary	75	0	0%
Papatoetoe High School	Manukau	Secondary	1600	0	0%
Redoubt North School	Manukau	Full Primary	619	0	0%
Robertson Road School	Manukau	Full Primary	494	0	0%
Sir Douglas Bader Intermediate School	Manukau	Intermediate	0	0	0%



School Name	Ward	School Type	School Roll Eligible To Scooter	No. of Scooters Counted	Scooters as share of those eligible ¹¹
					2014
South Auckland SDA School	Manukau	Full Primary	296	0	0%
Southern Cross Campus	Manukau	Secondary	740	0	0%
St Joseph's (Otahuhu)	Manukau	Full Primary	297	0	0%
St Joseph's School (Onehunga)	Manukau	Full Primary	228	0	0%
St Mary MacKillop Catholic School	Manukau	Full Primary	305	0	0%
Tangaroa College	Manukau	Secondary	930	0	0%
Te Kura Kaupapa Maori A Rohe O Mangere	Manukau	Composite	180	0	0%
Te Kura Maori o nga Tapuwae	Manukau	Composite	272	0	0%
Viscount School	Manukau	Full Primary	670	0	0%
Wiri Central School	Manukau	Full Primary	466	0	0%
Zayed College for Girls	Manukau	Intermediate/Secondary	103	0	0%
ACG Strathallan	Manurewa-Papakura	Composite	891	0	0%
Alfriston College	Manurewa-Papakura	Secondary	1500	0	0%
Alfriston School	Manurewa-Papakura	Full Primary	300	0	0%
Brookby School	Manurewa-Papakura	Full Primary	110	0	0%
Drury Christian School	Manurewa-Papakura	Composite	40	0	0%
Drury School	Manurewa-Papakura	Full Primary	402	0	0%
Edmund Hillary School	Manurewa-Papakura	Full Primary	144	0	0%
James Cook High School	Manurewa-Papakura	Secondary	1260	0	0%
Karaka School	Manurewa-Papakura	Full Primary	223	0	0%
Mansell Senior School	Manurewa-Papakura	Intermediate	135	0	0%



School Name	Ward	School Type	School Roll Eligible To Scooter	No. of Scooters Counted	Scooters as share of those eligible ¹¹
					2014
Manukau Christian School	Manurewa-Papakura	Full Primary	123	0	0%
Manurewa High School	Manurewa-Papakura	Secondary	1925	0	0%
Orere School	Manurewa-Papakura	Full Primary	46	0	0%
Papakura High School	Manurewa-Papakura	Secondary	900	0	0%
Paparimu School	Manurewa-Papakura	Full Primary	26	0	0%
Red Hill Primary School	Manurewa-Papakura	Full Primary	220	0	0%
Rosehill Intermediate School	Manurewa-Papakura	Intermediate	0	0	0%
Sir Edmund Hillary Collegiate	Manurewa-Papakura	Composite	1200	0	0%
St Anne's Catholic School	Manurewa-Papakura	Full Primary	560	0	0%
St Mary's Catholic School (Papakura)	Manurewa-Papakura	Full Primary	270	0	0%
Te Hihi School	Manurewa-Papakura	Full Primary	195	0	0%
Te Kura Akonga O Manuwera	Manurewa-Papakura	Full Primary	68	0	0%
Te Wharekura O Manurewa	Manurewa-Papakura	Secondary	24	0	0%
Bailey Road School	Maungakiekie-Tamaki	Full Primary	0	0	0%
Carey College	Maungakiekie-Tamaki	Composite	25	0	0%
Destiny School	Maungakiekie-Tamaki	Composite	180	0	0%
Ellerslie School	Maungakiekie-Tamaki	Full Primary	603	0	0%
Glen Innes School	Maungakiekie-Tamaki	Full Primary	199	0	0%
Golden Grove School	Maungakiekie-Tamaki	Full Primary	35	0	0%
One Tree Hill College	Maungakiekie-Tamaki	Secondary	997	0	0%
Onehunga High School	Maungakiekie-Tamaki	Secondary	1200	0	0%
Panmure Bridge School	Maungakiekie-Tamaki	Full Primary	206	0	0%



School Name	Ward	School Type	School Roll Eligible To Scooter	No. of Scooters Counted	Scooters as share of those eligible ¹¹
					2014
Panmure District School	Maungakiekie-Tamaki	Full Primary	132	0	0%
Pt England School	Maungakiekie-Tamaki	Full Primary	610	0	0%
Royal Oak Intermediate	Maungakiekie-Tamaki	Intermediate	378	0	0%
Ruapotaka School	Maungakiekie-Tamaki	Full Primary	200	0	0%
Somerville Intermediate	Maungakiekie-Tamaki	Intermediate	0	0	0%
St Patrick's School (Panmure)	Maungakiekie-Tamaki	Full Primary	0	0	0%
St Puis X School (Glen Innes)	Maungakiekie-Tamaki	Full Primary	140	0	0%
Stanhope Road School	Maungakiekie-Tamaki	Full Primary	450	0	0%
Tamaki College	Maungakiekie-Tamaki	Secondary	550	0	0%
Birkenhead College	North Shore	Secondary	740	0	0%
Carmel College	North Shore	Intermediate/Secondary	1045	0	0%
Glenfield College	North Shore	Secondary	700	0	0%
Hato Petera College	North Shore	Secondary	116	0	0%
Rosmini College	North Shore	Intermediate/Secondary	1150	0	0%
Saint Mary's Northcote	North Shore	Full Primary	400	0	0%
Wairau Intermediate School	North Shore	Intermediate	2291	0	0%
Westlake Boys' High School	North Shore	Secondary	2197	0	0%
Westlake Girls' High School	North Shore	Secondary	214	0	0%
Baradene College of the Sacred Heart	Orakei	Intermediate/Secondary	1122	0	0%
Glen Taylor School	Orakei	Full Primary	240	0	0%
Glendowie College	Orakei	Secondary	1099	0	0%
King's Preparatory School	Orakei	Full Primary	430	0	0%



School Name	Ward	School Type	School Roll Eligible To Scooter	No. of Scooters Counted	Scooters as share of those eligible ¹¹
					2014
Saint Kentigern Girls' School	Orakei	Full Primary	176	0	0%
Selwyn College	Orakei	Secondary	932	0	0%
Ahuroa School	Rodney	Full Primary	77	0	0%
Hare Krishna School	Rodney	Full Primary	96	0	0%
Kaipara College	Rodney	Secondary	620	0	0%
Kaukapakapa School	Rodney	Full Primary	248	0	0%
Living Way Learning Centre	Rodney	Composite	19	0	0%
Mahurangi Christian School	Rodney	Full Primary	37	0	0%
Pakiri School	Rodney	Full Primary	17	0	0%
Parakai School	Rodney	Full Primary	145	0	0%
Riverhead School	Rodney	Full Primary	289	0	0%
Rodney College	Rodney	Secondary	360	0	0%
Tapora School	Rodney	Full Primary	29	0	0%
Tauhoa School	Rodney	Full Primary	46	0	0%
Taupaki School	Rodney	Full Primary	264	0	0%
Tomarata School	Rodney	Full Primary	155	0	0%
Waimauku School	Rodney	Full Primary	620	0	0%
Wainui School	Rodney	Full Primary	211	0	0%
Waioneke School	Rodney	Full Primary	89	0	0%
Woodhill School	Rodney	Full Primary	80	0	0%
ACG Sunderland	Waitakere	Composite	262	0	0%
Birdwood School	Waitakere	Full Primary	203	0	0%



School Name	Ward	School Type	School Roll Eligible To Scooter	No. of Scooters Counted	Scooters as share of those eligible ¹¹
					2014
Colwill School	Waitakere	Full Primary	230	0	0%
Don Buck School	Waitakere	Full Primary	220	0	0%
Henderson High School	Waitakere	Secondary	640	0	0%
Holy Cross School (Henderson)	Waitakere	Full Primary	376	0	0%
Massey High School	Waitakere	Secondary	2200	0	0%
Massey Primary School	Waitakere	Full Primary	400	0	0%
Nga Kakano Christian Reo Rua Kura	Waitakere	Composite	91	0	0%
Rangeview Intermediate School	Waitakere	Intermediate	680	0	0%
Royal Road School	Waitakere	Full Primary	269	0	0%
Rutherford College	Waitakere	Secondary	1400	0	0%
St. Dominic's College	Waitakere	Intermediate/ Secondary	835	0	0%
Titirangi Rudolf Steiner School	Waitakere	Composite	260	0	0%
Waitakere School	Waitakere	Full Primary	445	0	0%
Waitakere Seventh Day Adventist School	Waitakere	Full Primary	35	0	0%
West Harbour School	Waitakere	Full Primary	333	0	0%
ACG Senior College	Waitemata and Gulf	Intermediate/Secondary	302	0	0%
Auckland Girls' Grammer School	Waitemata and Gulf	Secondary	1400	0	0%
Auckland Grammar School	Waitemata and Gulf	Secondary	1600	0	0%
Auckland International College	Waitemata and Gulf	Secondary	299	0	0%
Kadimah College	Waitemata and Gulf	Full Primary	170	0	0%
Kaitoke School (Claris)	Waitemata and Gulf	Full Primary	29	0	0%



<i>School Name</i>	<i>Ward</i>	<i>School Type</i>	<i>School Roll Eligible To Scooter</i>	<i>No. of Scooters Counted</i>	<i>Scooters as share of those eligible¹¹</i>
					<i>2014</i>
Okiwi School	Waitemata and Gulf	Full Primary	35	0	0%
St Joseph's School (Grey Lynn)	Waitemata and Gulf	Full Primary	90	0	0%
St Paul's College	Waitemata and Gulf	Intermediate/Secondary	268	0	0%
St Peter's College	Waitemata and Gulf	Intermediate/Secondary	1200	0	0%
Avondale College	Whau	Secondary	2643	0	0%
Immanuel Christian School	Whau	Composite	111	0	0%
Kelston Boys' High School	Whau	Secondary	857	0	0%
Kelston Girls' High School	Whau	Secondary	678	0	0%
Kelston Intermediate	Whau	Intermediate	260	0	0%
St Mary's School (Avondale)	Whau	Full Primary	200	0	0%
Wesley Intermediate School	Whau	Intermediate	134	0	0%



gravitas

APPENDICES

Appendix One: Methodology

Appendix Two: Annual Average Daily Traffic (AADT) Calculation



APPENDIX ONE: METHODOLOGY

Manual cycle counts have been conducted using a standardised methodology across all sites. This methodology is outlined below.

1. Choice of Sites

Decisions as to which sites were chosen for cycle counts were guided by the planned developments for the Regional Cycle Network.

Manual counts were undertaken at 85 different sites throughout the region. Sites were distributed by ward as follows:

- Albany 15 sites
- Albert-Eden–Roskill 11 sites
- Franklin 2 sites
- Howick 5 sites
- Manukau 10 sites
- Manurewa-Papakura 4 sites
- Maungakiekie-Tamaki 7 sites
- North Shore 8 sites
- Orakei 3 sites
- Waitakere 13 sites
- Waitemata and Gulf 10 sites
- Whau 4 sites

(Note: Eight sites lie on the border of two wards. These sites have been included in both ward reports).

2. Monitoring Times

Time Of Day

Manual counts in the morning peak were conducted between 6:30 and 9:00 am, with manual counts in the evening peak conducted between 4:00pm and 7:00pm.

Day Of Week

Previous experience conducting cycle and other traffic manual counts has found that these counts are best undertaken on either a Tuesday, Wednesday or Thursday as travel patterns on Mondays and Fridays tend to be more variable.



Time Of Year

To ensure consistency throughout the region, standard monitoring days were selected and agreed upon by Auckland Transport. In selecting the days, consideration was given to:

- the timing of school and tertiary holidays/the commencement of term time for tertiary institutions;
- the timing of statutory holidays (particularly Easter);
- the timing of Bikewise Month; and
- daylight saving times.

It was agreed that manual counts would commence on Tuesday the 4th of March and be conducted on the first three fine days of the 4th, 5th, 6th, 7th, 12th or 13th of March.

Counts were conducted on the following days:

- Tuesday 4th March Albany, North Shore, Waitakere
- Wednesday 5th March Howick, Franklin, Manukau, Waitemata & Gulf
- Thursday 6th March Whau, Albert-Eden-Roskill, Orakei, Manurewa-Papakura, Maungakiekie-Tamaki

Note: Counts in the morning and evening peaks took place on the same day for each site.

Weather and Daylight Conditions

To reduce the impact of weather conditions on cycle numbers, manual counts were conducted on predominantly fine days. In addition, if it rained during the morning peak, monitoring in the evening peak on that same day was also postponed, irrespective of the weather (as it can be assumed that cyclists' travel behaviour in the evening peak will have been influenced by decisions they made earlier in the day – for example, the decision to leave their bike at home and use public transport instead). Care was taken to ensure that all manual counts were conducted prior to the conclusion of daylight saving.

The weather on the three count days in 2014 was as follows:

Tuesday 4th March

- Sunrise: 7:09am; Sunset: 7:56pm.
- Highest temperature: 20.0 degrees Celsius.
- Mostly fine weather with a few sites experiencing light drizzle in the morning and cloud in the evening.

Wednesday 5th March

- Sunrise: 7:10am; Sunset: 7:55pm.



- Highest temperature: 20.0 degrees Celsius.
- Cloudy and windy with occasional light drizzle in the morning shifts. Mostly fine weather with clear sky in the evening, although a few sites experienced light winds.

Thursday 6th March

- Sunrise: 7:11am; Sunset: 7:54pm.
- Highest temperature: 22.0 degrees Celsius.
- Mostly fine weather in the morning and evening shifts.

3. Conducting The Manual Counts

Scoping Visit

Gravitas visited each of the sites prior to the first monitoring shift. This scoping visit was used to map the roading network and to identify and map the range of directions that cyclists could travel through the site. This visit was also used to identify any particular features (such as designated cycle ways) or potential hazards that surveyors needed to be aware of when monitoring at the site. As part of the scoping visit, a recommended observation point was identified and mapped (this point chosen on the basis of offering the best trade-off between visibility and safety). The maps prepared for each site have been included in this report – just prior to the count results for each site.

As part of the scoping visit, a small number of sites were identified as requiring two or more surveyors to accurately capture all cycle movements (due predominantly to the complexity of the roading/cycleway network at the site or poor visibility at the intersection). Two surveyors were used at:

- Great South Road/Campbell Road/Main Highway, Greenlane (Site 21; Maungakiekie-Tamaki/Albert-Eden-Roskill wards).
- Beach Road/Browns Bay Road, Mairangi Bay (Site 45; Albany ward).
- Onehunga Harbour Road (Site 17, Maungakiekie-Tamaki ward).

Three surveyors were used at the ferry terminal site (Site 22; Waitemata and Gulf ward).



Briefing Session

Prior to their monitoring shift, all surveyors participated in a briefing session. The session covered:

- the overall aims of the Regional Cycle Monitoring Plan and how the manual monitoring fits with this Plan;
- the aims and purpose of the cycle monitoring and the process to be used;
- review of all materials supplied – how to interpret and use the maps, how to accurately record data on count sheets etc;
- health and safety issues; and
- general administration – shift times, collection and return of materials etc.

This session was interactive, with surveyors being encouraged to ask questions and seek further explanation on issues they were unsure about. Surveyors were also provided with a copy of the briefing notes for reference during their shifts. During the briefing session, all surveyors were also required to conduct a “practice count” for 20 minutes at the Ponsonby Road/Karangahape Road site.

Conducting The Manual Counts

Each site was assigned to a surveyor, who was issued with a map that showed the range of movements a cyclist could make through that site. In addition to the map, surveyors were issued with a clipboard, a safety vest and a letter identifying them as a member of a Gravitas research team¹².

During their shift the surveyor collected data on:

- The total number of cyclists¹³ passing through the intersection;
- The direction in which cyclists are travelling (using the numbers on the map provided);
- The time at which cyclists pass through the intersection (to the nearest minute);
- Whether cyclists are school children or adults (determined by whether they are wearing a school uniform or clearly of school age);
- Whether cyclists are wearing a helmet;
- Gender of the cyclist (*collected for the first time in 2011*); and
- Whether cyclists are riding on the road, footpath or designated off- road cycleway¹⁴.

¹² This letter also contained contact details for Auckland Transport and Gravitas Research and Strategy for any member of the public or local business owners who had queries about the work being undertaken.

¹³ To ensure consistency across all surveyors, a “cycle” was defined as being non-motorised, with one or two wheels and requiring pedalling to make it move. Note that this definition did not include scooters.

¹⁴ Note: For the purpose of this project, an off-road cycleway is defined as designated off-road path for cycles. This includes exclusive cycle paths, separated paths (such as the footpath on Tamaki Drive) and shared-use paths (available to cyclists and pedestrians). It excludes on-road cycle lanes (that is, designated lanes marked on the road).



Since 2009, surveyors have been required to indicate those cyclists riding together in groups of three or more. To be consistent with previous years, each member of these 'pelotons' has been included in the site-level analysis as a separate cyclist movement. However, where pelotons were observed, the number of cyclists and the time they passed through the site has been given in the report, along with a percentage figure indicating what share of all cyclists at the site were riding as groups.

In addition, where cyclists were recognisable, surveyors were instructed to record each cyclist no more than three times during a single shift, irrespective of how many movements they actually made through the site. Surveyors noted where and when this occurred.

Data was collected on the weather and daylight conditions at the site. Surveyors were also encouraged to record any information that may have affected cycle numbers or cycle movements at the site – for example, construction or maintenance works being conducted on the cycle way or road works at the intersection.

A team of supervisors checked that surveyors were in the correct position and recording data accurately.

4. Data Analysis

Upon their return to Gravitas, all count sheets were checked for completeness. The raw data was then entered into Excel for logic checking, analysis and graphing.

5. Annual Average Daily Traffic (AADT) Analysis

It is acknowledged that the number of cyclists using a site varies by time of day, day of the week and week of the year, and therefore it is not valid to simply multiply manual count data collected over a certain (relatively brief) period out to represent a full day, week or year. However, according to Land Transport New Zealand¹⁵, Annual Average Daily Traffic (AADT) analysis can be used to estimate the average annual daily flow of cyclists from manual and automated cycle counts conducted at one point in time. The procedure involves deriving scale factors, which account for the time of day, day of the week, and week of the year (which varies with school holidays and season) as well as weather conditions on the count day. These scale factors are then applied to the count data collected to give an AADT estimate.

¹⁵ <http://www.ltsa.govt.nz/road-user-safety/walking-and-cycling/cycle-network/appendix2.html>



Using the manual count figures for each site, it has been possible to provide the average annual daily traffic flow of cyclists (cycling AADT) estimate for each site. AADT scale factors (morning and afternoon) were provided by ViaStrada¹⁶. By applying the scale factor to the manual count data for each morning and afternoon peak, and averaging the two figures, an average annual daily cyclist flow figure has been obtained for each site. *A more comprehensive overview of the methodology used for this analysis is provided in Appendix One.*

Note: ViaStrada acknowledge that, as cycling volumes fluctuate from day to day depending on the weather, this method should be used with caution. They note that ideally an estimate should be achieved based on the average of the results of several counts, rather than counts from a single day, as in this study¹⁷.

6. School Bike Shed Counts

As stated above, manual cycle counts were undertaken during the morning (6:30am to 9:00am) and evening (4:00pm to 7:00pm) peaks. However, it was noted in the design phase of the project that the timing of the evening peak monitoring would mean that the greatest share of students cycling home from school will be excluded from the counts. This was identified as a potential weakness of the monitoring proposed.

Therefore, it was suggested that information on numbers of students cycling to and from intermediate and secondary schools across the region could be collected by counting the number of bikes in school bike sheds on a pre-determined day. Rates of cycling among students could also be assessed by calculating the number of bikes counted as a share of the school's total roll (or share of the school's roll eligible to cycle).

Initially it was decided that school bike shed monitoring would focus only on intermediate and secondary schools (and composite schools which included children of intermediate and secondary school age), since children travelling to primary schools are considered by many parents (and schools) as too young to cycle to school. Note however that, to ensure all children of intermediate school age cycling to school were captured, full primary schools (those catering for Years 1 to 8) were included in the school bike shed count from 2011.

Based on feedback from some schools in 2013, in 2014 a count of the number of students who use (non-motorised) scooters to get to and from school was also included in the school bike shed count.

¹⁶ ViaStrada is a traffic engineering and transport planning consultancy based in Christchurch, New Zealand.

¹⁷ Appendix 2 of the Cycle Network and Route Planning Guide (CNRPG) (Land Transport New Zealand, 2004)



Methodology

The following process was used to collect the school bike shed count data.

1. Gravitas designed an information sheet that was distributed to most full primary, intermediate, secondary and composite (Years 1 to 13) schools in the Auckland region via email (note a small number of schools were omitted due to the special nature of the students e.g. boarding schools, special needs schools). This sheet was designed in consultation with Auckland Transport to ensure all necessary information was collected.
2. This email was then sent to all eligible schools in Auckland region (n=306) to notify them of the bike shed count and to let them know what they would be required to do. Included in this email was a link to an online count form.
3. To enhance the comparability of the school bike shed data with that of the regional cycle monitor, Tuesday 4th March was designated as the bike shed count day. (Most schools reported that they undertook the count on this day.)
4. Once the school bike shed count had been completed, schools completed the online count form and submitted it electronically to Gravitas. Gravitas contacted all participating schools who had not returned their sheets after five working days, first by email (two rounds) and then by telephone. All count forms were checked for completeness before being data-entered into Excel. In 2014, 264 responses were received, a response rate of 88 per cent. (This compares with 92 per cent in 2013.)

7. Reporting

The data from the manual counts has been presented at a site-by-site, TA and regional level.

Manual Counts - Site Level Reporting

The following results have been reported for each site:

- Total number of movements through the intersection during each peak;
- Total number of movements through the intersection during each ten-minute interval during each peak;
- Number of cyclists making each directional movement through the intersection during each peak; and
- Share of cyclists through the intersection during each peak who are:
 - adults/school children
 - wearing a helmet/not wearing a helmet
 - male/female
 - riding on the road/riding on the footpath/riding on an off-road path



Manual Counts - Aggregated Reporting

Results have also been reported at an aggregate level (that is, summing up all sites) – by ward and across the region – to show the total number of cycle movements recorded (both overall and by ten-minute intervals) and the characteristics of the cyclists.

Bike Shed Counts

Results have been provided by school (along with notes explaining why counts for some schools may not be representative), as well as at a ward and regional level. Raw cycle numbers and a “cyclists as a share of total school roll” figure have both been provided.



APPENDIX TWO: ANNUAL AVERAGE DAILY TRAFFIC (AADT) CALCULATION

Note: *This description of the calculation of the Annual Average Daily Traffic Flow of Cyclists has been provided by ViaStrada based on their May 2007 report for ARTA entitled “Development of a Cycle Traffic AADT Tool”.*

Purpose

The purpose of this appendix is to document the recommended procedure for estimating a cycling AADT¹⁸ in the Auckland region from any Gravitas manual count.

Method for Estimating AADT

The methodology is based on that published in Appendix 2 of the Cycle Network and Route Planning Guide (CNRPG)¹⁹, adjusted for Auckland conditions based on data collected during March 2007. The aim was to use the published methodology as much as possible, with any necessary departure from it documented below. The following equation yields the best estimate of a cycling AADT:

$$AADT_{Cyc} = Count \times \frac{1}{\sum H} \times \frac{1}{D} \times \frac{W}{7} \times \frac{1}{R}$$

where *Count* = result of count period

H = scale factor for time of day

D = scale factor for day of week

W = scale factor for week of year

R = scale factor for weather conditions on the count day

If more than one set of count data is available (for example, both a morning count and afternoon count), then **the calculation should be carried out for each set of data, and the estimates derived from each averaged.**

The values for the scale factors (*H*, *D*, *W* and *R*) have been deduced in the ViaStrada report and are included in this report in Figure 1. For the Gravitas counts, the following factors apply:

$\sum H_{AM} = 30\%$; $\sum H_{PM} = 33.3\%$; (AM and PM refer to morning and afternoon respectively)

D = 14%

W = 0.9

$R_{DRY} = 100\%$; $R_{WET} = 64\%$ (DRY and WET refer to fine and rainy conditions respectively)

¹⁸ Annual average daily traffic

¹⁹ LTSA, 2004



These can be combined as a single multiplier to convert the manual count to an AADT estimate as follows:

	Morning	Afternoon
Dry weather	3.06	2.78
Wet weather	4.78	4.35

Worked Example

If morning and afternoon manual traffic counts are available at a site, the AADT can be calculated using the count summaries for each period. For example, a morning survey of 102 and an afternoon survey of 130 are suggested. It is assumed for this example that the weather was fine in both surveys.

- Thus the AADT from the morning survey is estimated as $3.06 \times 102 = 312$.
- The AADT from the afternoon survey is estimated as $2.78 \times 130 = 359$.
- The average of these two estimates is 335; this is the estimate of AADT for this site, based on the two surveys.



Figure 1: Scale Factors for Auckland Region

Period Starting	Period Ending	Interval (hours)	H _{Weekday}		H _{Weekend}	
			Mon to Fri	Sat & Sun		
0:00	6:30	6.50	5.5%		1.8%	
6:30	6:45	0.25	2.3%		0.8%	
6:45	7:00	0.25	2.6%		1.5%	
7:00	7:15	0.25	3.2%		1.4%	
7:15	7:30	0.25	3.7%		2.1%	
7:30	7:45	0.25	3.8%		2.8%	
7:45	8:00	0.25	4.0%		3.3%	
8:00	8:15	0.25	3.9%		3.2%	
8:15	8:30	0.25	3.1%		3.8%	
8:30	8:45	0.25	2.3%		3.5%	
8:45	9:00	0.25	1.3%		3.5%	
9:00	10:00	1.00	4.2%		13.6%	
10:00	11:00	1.00	3.4%		11.6%	
11:00	12:00	1.00	2.6%		9.1%	
12:00	13:00	1.00	2.7%		6.6%	
13:00	14:00	1.00	2.7%		5.0%	
14:00	14:15	0.25	0.7%		1.9%	
14:15	14:30	0.25	0.7%		1.3%	
14:30	14:45	0.25	0.6%		1.3%	
14:45	15:00	0.25	0.6%		1.2%	
15:00	15:15	0.25	0.8%		1.1%	
15:15	15:30	0.25	1.0%		0.9%	
15:30	15:45	0.25	1.3%		1.4%	
15:45	16:00	0.25	1.2%		1.3%	
16:00	16:15	0.25	2.1%		1.0%	
16:15	16:30	0.25	2.3%		1.7%	
16:30	16:45	0.25	2.1%		1.0%	
16:45	17:00	0.25	2.5%		1.2%	
17:00	17:15	0.25	3.3%		1.2%	
17:15	17:30	0.25	3.7%		1.2%	
17:30	17:45	0.25	4.0%		1.1%	
17:45	18:00	0.25	3.2%		1.1%	
18:00	18:15	0.25	3.0%		0.9%	
18:15	18:30	0.25	2.7%		0.7%	
18:30	18:45	0.25	2.4%		0.8%	
18:45	19:00	0.25	2.1%		0.6%	
19:00	20:00	1.00	5.6%		2.0%	
20:00	0:00	4.00	3.0%		1.5%	
24.00			100.0%		100.0%	

Day	D
Monday	14%
Tuesday	14%
Wednesday	14%
Thursday	14%
Friday	14%
Saturday	14%
Sunday	16%

Period	W
Summer holidays	1.0
Term 1	0.9
April holidays	1.0
Term 2	1.0
July holidays	1.2
Term 3	1.1
Sep/Oct holidays	1.2
Term 4	1.0

Weather	R
Fine	100%
Rain	64%