

Why are we here today?

TO PROVIDE YOU WITH INFORMATION ON:

- 1** *About the AMETI transport projects*
- 2** *Current and upcoming construction*
- 3** *Panmure Station upgrades*
- 4** *Proposed new AMETI link road + proposed Fraser Road/Mountain Road link*
- 5** *Current proposal for Van Damm's Lagoon and the new wetland feature*
- 6** *Proposed intersection to replace Panmure roundabout*
- 7** *Lagoon Drive Busway proposal*
- 8** *Current proposed design for the Panmure Bridge*

TO SEEK FEEDBACK ON:

Involving the community for enhancement ideas for Van Damm's Lagoon and the new wetland area

**Have
Your Say...**

About the AMETI transport projects

1



OVERALL SCHEME / PROPOSAL



Current travel issues

- Unreliable, infrequent bus services
- Poor connection between rail station and town centre
- Poor walking and cycling environment
- Poor travel choice with over-reliance on car
- Congestion
- Rat running on residential streets

The AMETI improvements will:

- Increase travel options
- Increase connectivity between communities and businesses
- Improve travel times
- Provide road upgrades
- Provide safety improvements including more and safe pedestrian crossings
- Offer new cycle facilities and walkways
- Offer new or increased public transport services including a new busway
- Addition of real-time travel information e.g. MAXX

The Auckland Manukau Eastern Transport Initiative (AMETI) is a group of transport projects for the eastern suburbs. The aim is to give people living in the area transport choices by improving public transport, walking and cycling facilities and reducing traffic congestion.

Other major aims are to unlock the economic potential of the area and to promote good urban design.

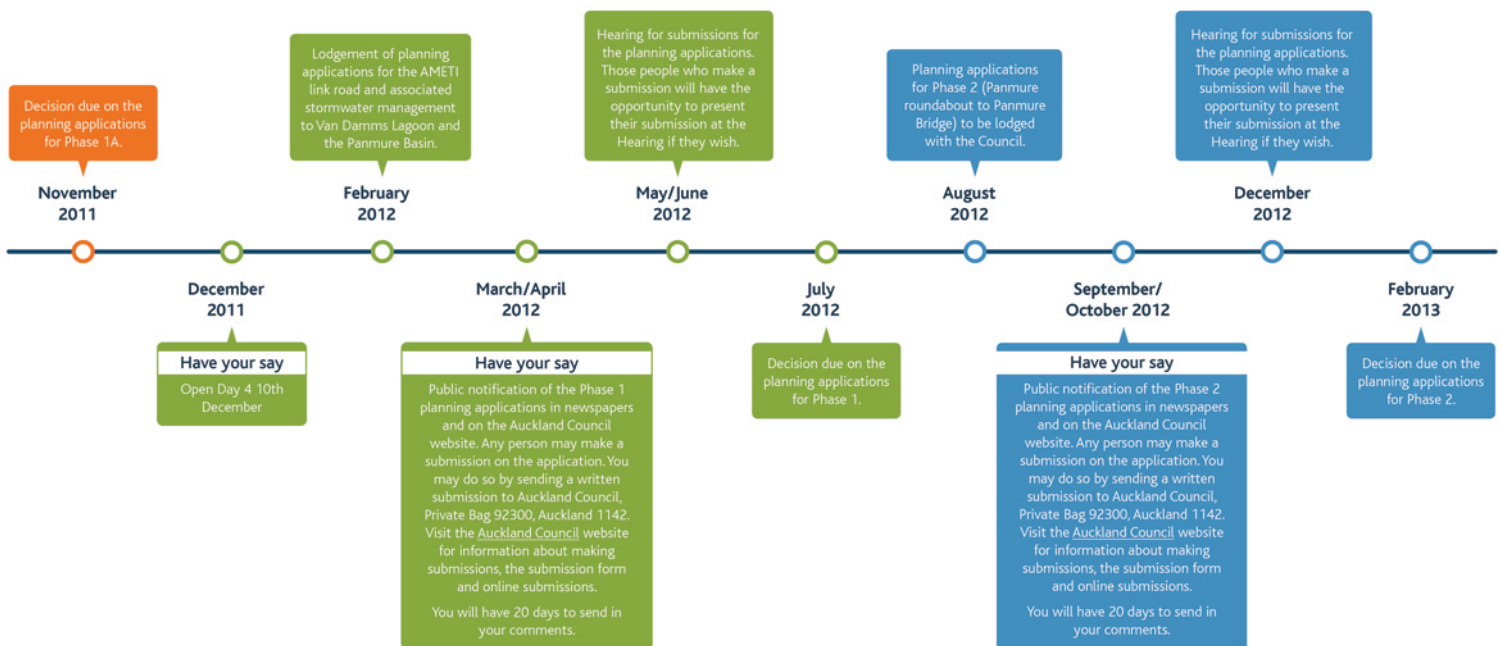
Severe congestion in the area is holding back the huge potential for economic growth in the area – there are a number of sites that could be key redevelopment sites if transport links are improved. This means there is the potential for a large number of new jobs in the area.

The population is expected to grow by 20,000 – 25,000 over the next 20 years, further increasing the pressure on the transport system.

Project timeline

1

TIMELINE SUBJECT TO CHANGE



KEY

- Phase 1A** - Mountain Road Realignment, Ellerslie Panmure Highway Widening, Rapid Transit Network Bridge, and new road for local buses connecting Ellerslie Panmure Highway and Mountain Road.
- Phase 1** - new AMETI link road from Triangle Road in the south to Morrin Road in the north, including improvements to Mt Wellington Highway and Ellerslie Panmure Highway. Stormwater Management including enhancements to Van Damm's Lagoon.
- Phase 2** - Panmure Roundabout to Panmure Bridge. This phase includes the replacement of the Panmure roundabout, construction of a Busway along Lagoon Drive and the widening of Panmure Bridge.

Walking and cycling improvements proposed for Panmure

1





Current AMETI Panmure construction

- Realigning Mountain Road east to meet Jellicoe Road
- Replacement of Mountain Road Bridge during Christmas rail network shutdown
- Construction of a temporary Park and Ride, to allow for construction on part of the current site. This will result in an increase in park and ride spaces at the station.
- Demolition of buildings along Eilerslie Panmure Highway
- Construction of new services trench under the railway line
- Work on the Panmure rail station platforms
- Relocation of services

EXPECTED COMPLETION DATE – JULY 2012 / CONTRACTOR – DOWNER NEW ZEALAND

What to expect

- Traffic reduced to one lane on Mountain Road during December
- Traffic diversions while Mountain Road bridge closed from Boxing Day until February
- Changes to access to Panmure Station

Managing impacts

- Daily monitoring of noise levels
- Regular communication with directly affected properties and wider community
- Community Liaison team dedicated to minimising impacts to the public during construction period phone 355 3553 or email: Greg.Home@aucklandtransport.govt.nz



Upcoming construction 2012

Auckland Transport expects to award a contract in the New Year for further AMETI work in the Panmure area.

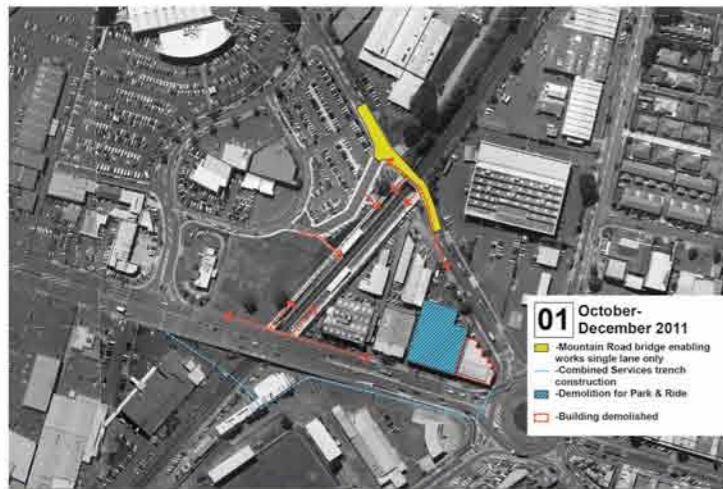
This will include:

- New bridge over the rail line for future busway
- Widening Eilerslie Panmure Highway and replacing bridges
- New road for local buses connecting Eilerslie Panmure Highway and Mountain Road.
- Station upgrade

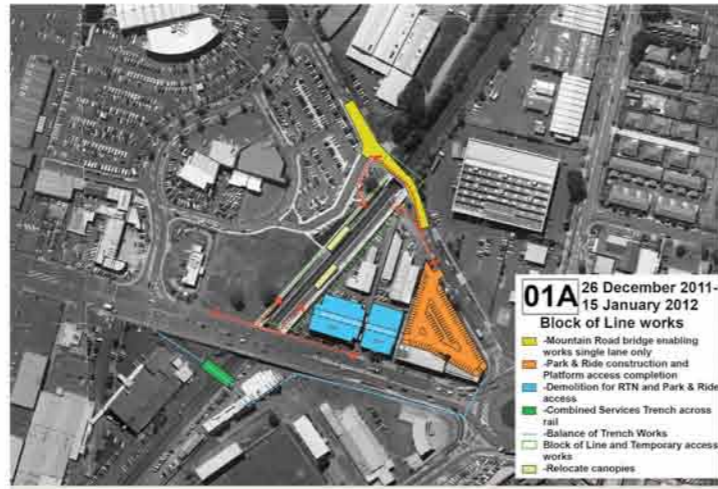
TAKE A FLYER – This has our contact details for the construction works around mountain road if you need to get hold of us.

Sign up below for regular construction updates.

Panmure Interchange and AMETI Road Construction Sequence



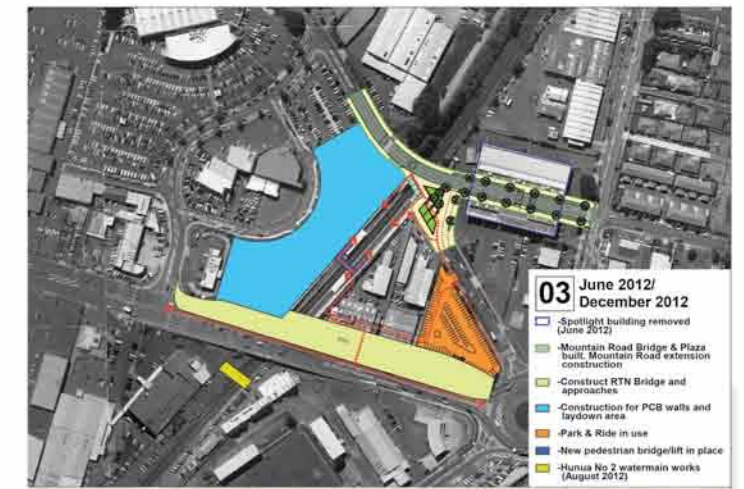
CURRENT



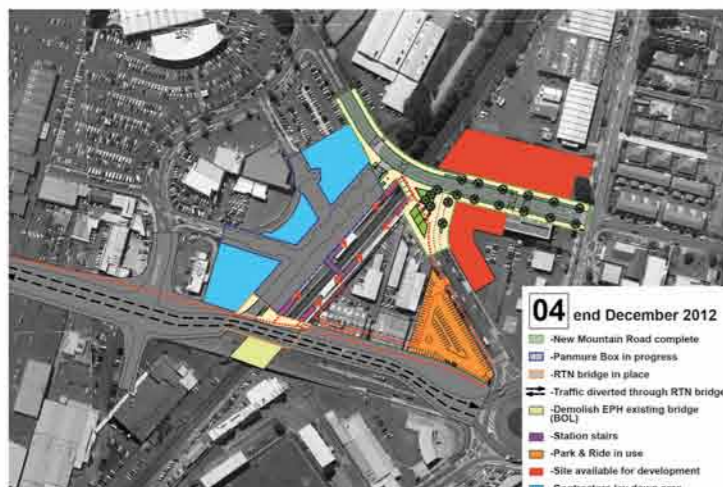
LATE DECEMBER 2011 / JANUARY 2012



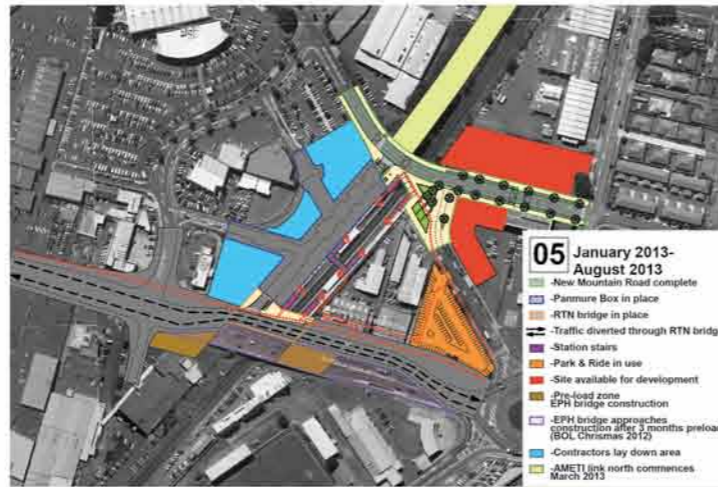
JANUARY TO MID 2012



MID TO DECEMBER 2012



LATE 2012 TO EARLY 2013



JANUARY TO AUGUST 2013



AUGUST TO END 2013



LATE 2013 TO APPROX MARCH 2014

Construction is underway and is expected to be complete by 2014

TIMELINE APPROXIMATE ONLY

Panmure Station will have major improvements, making it quick and easy to transfer between bus and rail. Currently buses from Pakuranga and Howick stop on Queens Road, where it is a nine minute walk to the rail station. With the new interchange this will be reduced to a one minute walk.

UPGRADED PANMURE STATION AND AREA



The new Panmure bus and rail interchange will include:

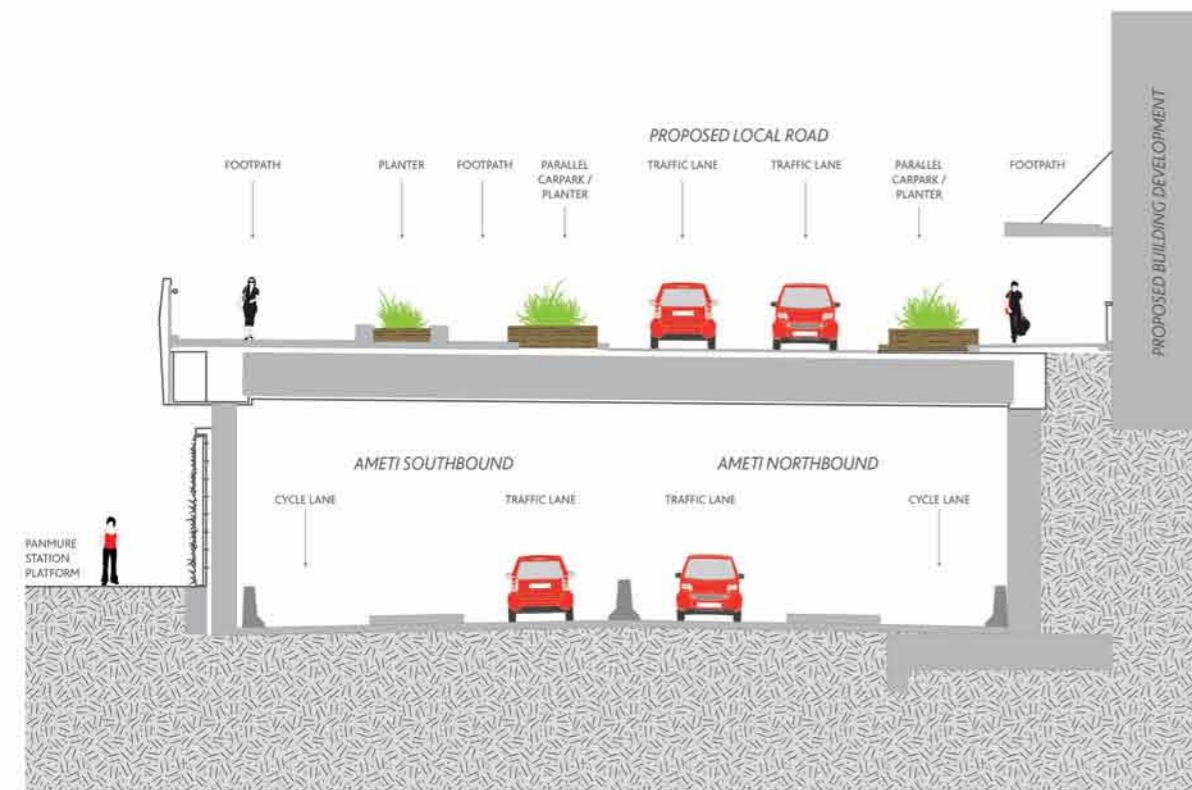
- Improvements to pedestrian connections around the station
- Improvements to pedestrian connections to the town centre
- An enhanced interchange between buses and rail
- Cycle facilities including cycle parking
- Park and Ride
- Enabling land use development

- A Forge Way
- B Mountwell Crescent Connection
- C Local Bus Road & Stops
- D Short Term Parking & Taxis
- E Mountain Road Realignment
- F Jellicoe Road
- G Roundabout Replacement Design to be confirmed in Phase 2
- H Rapid Transit Network Road and Station
- I General Traffic and Cycle Lanes
- J Replacement of Ellerstie - Panmure Highway Bridge
- K New AMETI Road

Panmure Station upgrade:

- Panmure Rail station has experienced very rapid growth:
 - In 2003 used by less than 100 passengers per day
 - In 2010 used by over 800 passengers per day
- Panmure is now 9th busiest rail station on Auckland network.
- Forecast to grow to 7,000 passengers per day by 2026
- Interchange design is an essential element of a public transport system
- AMETI will dramatically improve the quality of the Panmure interchange
- Designed to minimise walk times, maximise quality of connections and waiting space

AMETI link road through covered box

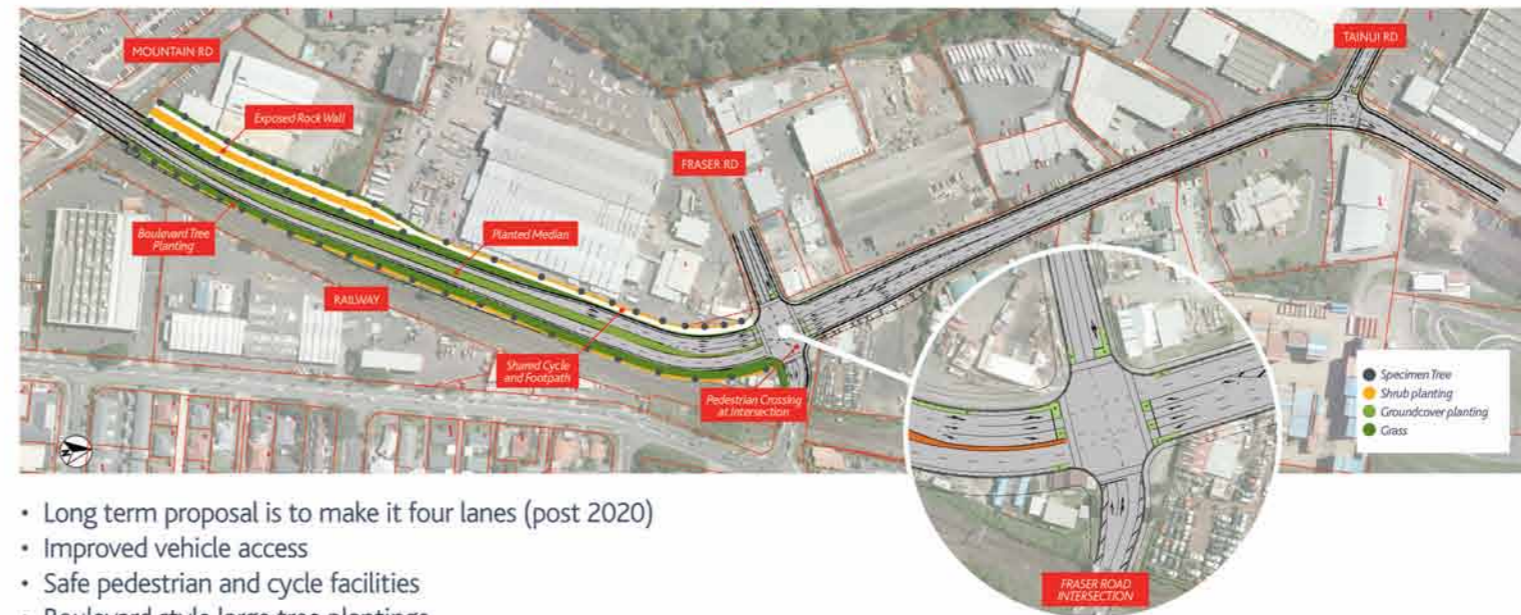


COVERED BOX CROSS SECTION INITIAL SCHEME

The proposal is for a new two lane road from Morrin Road in the north to Mt Wellington Highway in the south.

- Between Mountain Road and Ellerslie-Panmure Highway the new road will be covered
- Another road will be built on top, for local buses and providing access to the station for drop off and taxis

AMETI link road (North)



- Long term proposal is to make it four lanes (post 2020)
- Improved vehicle access
- Safe pedestrian and cycle facilities
- Boulevard style large tree plantings

AMETI link road (South)



- New road extended to meet Mt Wellington Highway near Triangle Road
- Initial two lane scheme has limited impact on Van Damm's Lagoon
- Footbridge between Ireland Road and William Harvey Place to be replaced with wider longer bridge with disabled access ramps
- Left turn from William Harvey Place onto the new road provided

AMETI link road

The new AMETI link road has been designed to:

- Relieve congestion on the existing road network in the area
- Create a link between Glen Innes and Mt Wellington to serve proposed developments to the north of Panmure

Concepts for the AMETI link road have been presented at open days since 2007. Your key feedback at that time was to avoid the significant feature of Mt Wellington/Maungarei.

The current preferred alignment:

- Enables the enhancement of the Panmure Station and will facilitate future development in this area by having the alignment of the AMETI link road in a tunnel beneath Ellerslie Panmure Highway and Mountain Road
- Avoids the need for an at grade intersection with Ellerslie Panmure Highway and Mountain Road which would otherwise be similar to motorway style on and off ramps. This would have major severance effects on walking and cycling as well as creating further congestion on the road network
- Avoids the significant geological feature of Mt Wellington / Maungarei
- Includes 1.8m cycle lanes in both directions, 2.5m wide through the tunnel
- Includes separate 3m off road shared pedestrian / cycle path on western side linking to Mountain Road, Ellerslie Panmure Highway interchange and the Panmure Town Centre

The planning applications will be lodged with the council in February/March 2012 with public notification likely to happen in March/April 2012. The public will have an opportunity to make submissions at this stage of the process.

It is anticipated that construction would then begin in February 2013.



PROPOSED LINK FROM FRASER ROAD TO MOUNTAIN ROAD

We are currently investigating a possible link between Fraser Road and Mountain Road to provide further local connections and address feedback that was received in April 2011.

Two options for the 300m link road are being considered, the image above shows our current preferred option.

We expect to have a better understanding of the feasibility of this link within the next few months.