

# Accessibility e-learning module

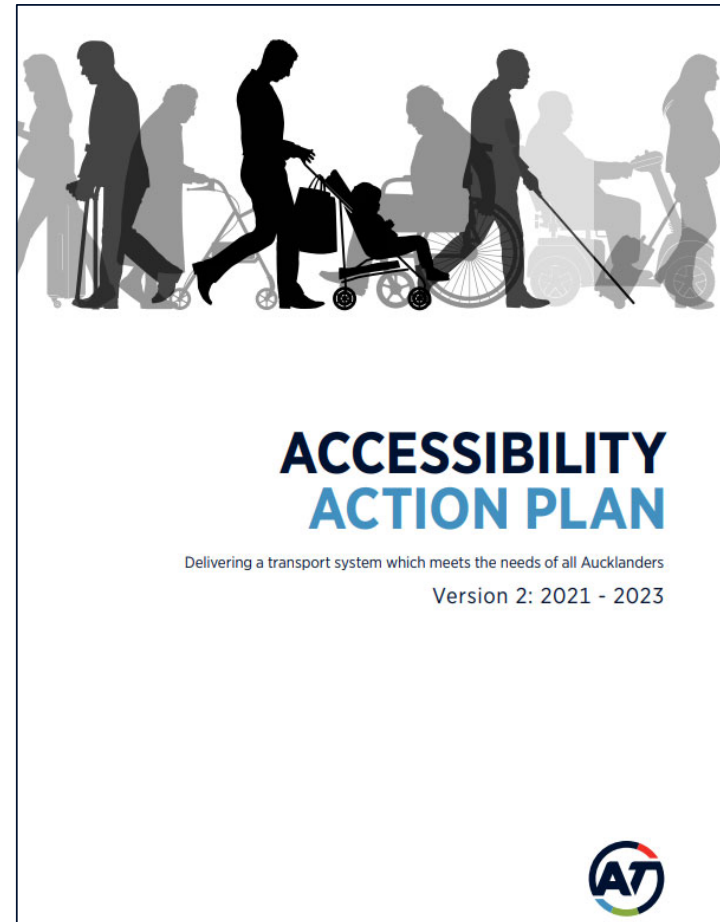
an initiative of the Accessibility Action Plan



*Let's go there* 

# Need for this module

- It is an action within the Accessibility Action Plan
- Suggested by our advocates – as an explainer
- To make AT staff more aware of, and responsive to, accessibility needs in their planning and projects because we all play a role



# Intention of this module

- Raise awareness across the business about accessible needs
- Show AT Staff that we all have a role in ensuring easy journeys for everyone – most of our staff make a difference to how easy the journeys are for people with accessibility needs, many just don't realise it



# Who helped make the module

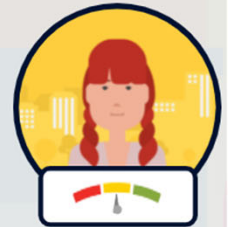
- The Public Transport Accessibility Group (PTAG)
- The Accessibility Champions Group
- The Learning and Development team
- Integrated Network Planning
- Optimism – our solution provider



# How is the intention conveyed

- The module follows along three different people's travels and explore the impact AT's decisions, big or small, has on their experience
- Learners get to make choices that will either make the person's trip easier or harder

**Karla has left her house to walk to the bus stop. It's difficult to see where the slippery parts are especially in the places where the slope of the pavement changes. Choose an option to improve her journey and explore what happens.**



Create a direct route for Karla to the bus stop.

Ensure that crossings are paved correctly to allow for grip.

Sit with Karla to work out a better route to her bus stop.

Covered areas at busy bus stops for all customers.



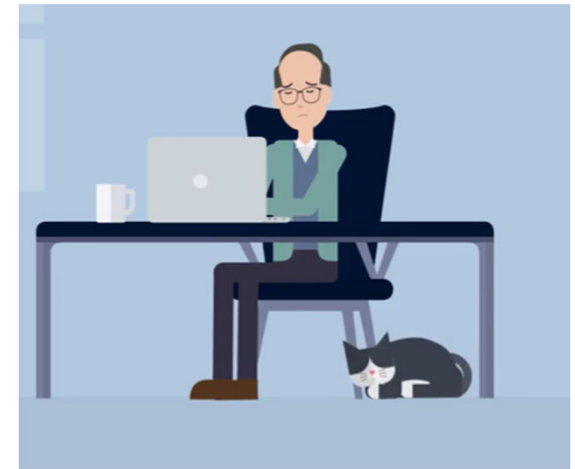
# The people in the module



**Mikaere uses a wheelchair** and is taking the train to go to a concert



**Karla is blind and has a guide dog** and is taking her usual bus from Puhinui to Manukau



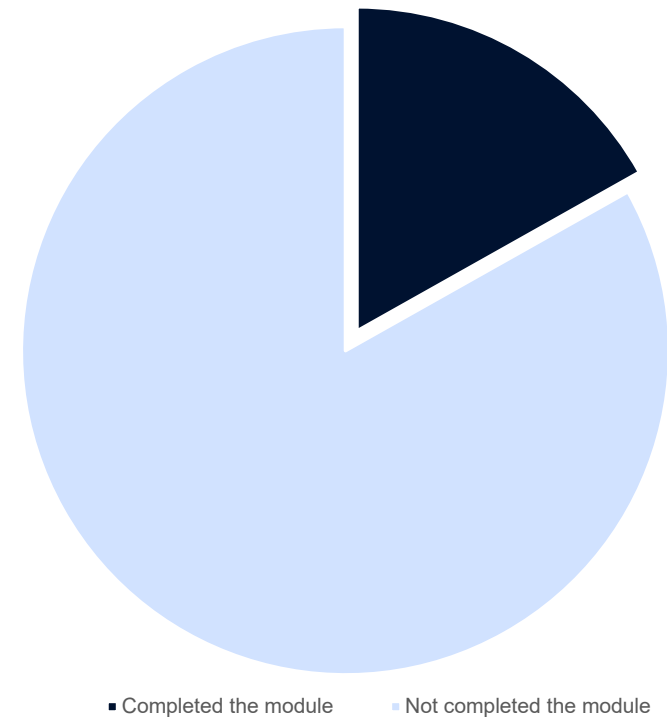
**Trevor has a brain injury and is not tech savvy.** He is meeting his friend at Sylvia Park and wants to take Public Transport there



# The uptake

- In the couple of months since the module's release at the end of February 2022, 17% (329) of AT staff have completed the module
- We are aiming to make this a compulsory module and this process is underway – we will keep pushing for everyone to do it
- It is assigned to everyone's To-Do list
- We will promote it where appropriate, for instance on Global Accessibility Awareness Day (19 May)

Percentage of AT Staff that have completed the module



**Thank you!**

*Let's go there* 