

# Connected Communities

## New North Road & Symonds Street upgrade

### Why we are transforming New North Road



# Connected Communities

## New North Road & Symonds Street upgrade

### The Three Approaches



**The transformation of the New North Road and Symonds Street corridor is a key focus for Auckland Transport.**

The corridor is approximately 11km long and lies within the Whau, Waitematā and Albert-Eden Local Board areas. It plays an important role in connecting the western and central isthmus suburbs to Auckland's City Centre.

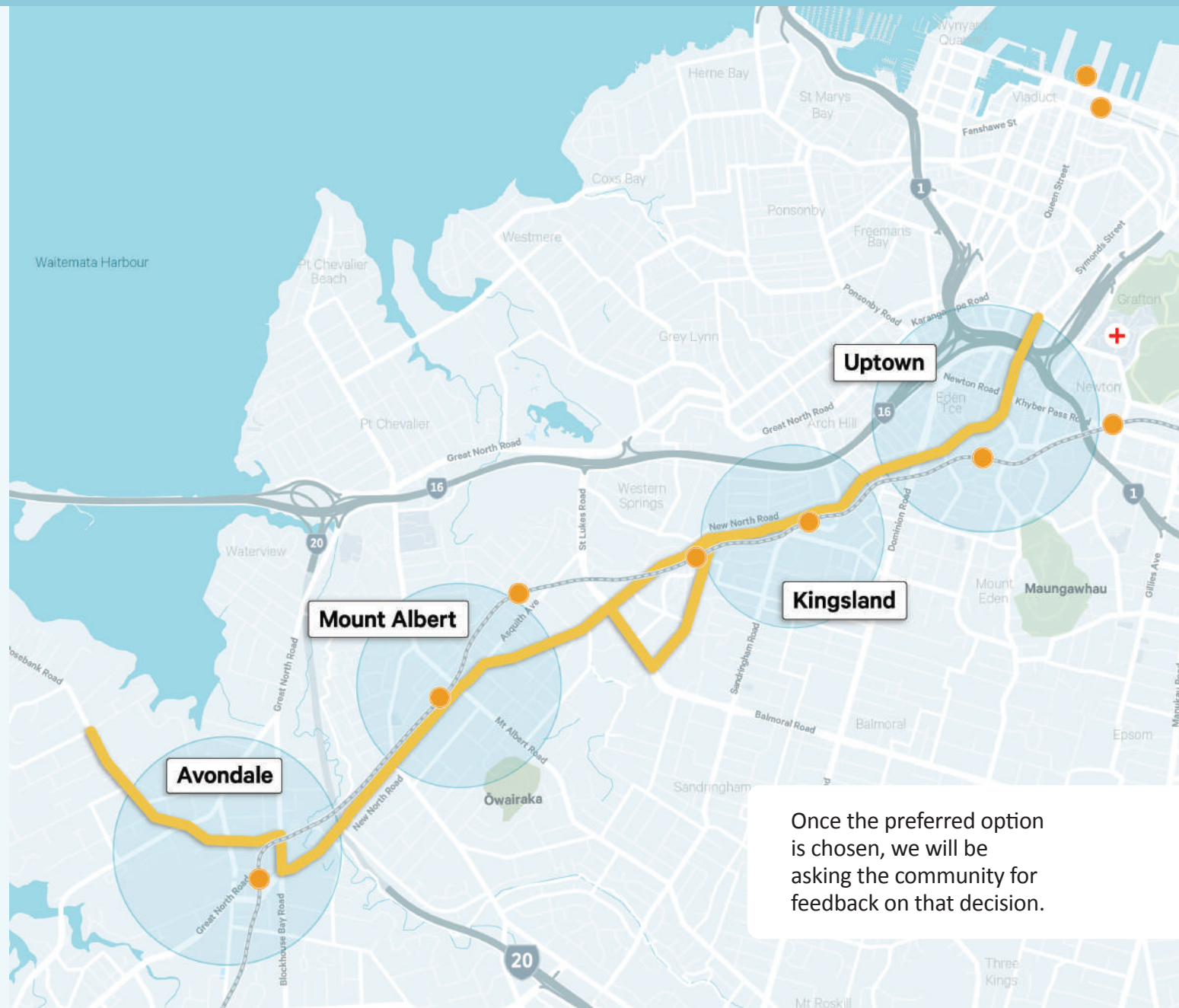
We are seeking your feedback on the Three Approaches that have been proposed for the corridor:

- **Approach A – Two routes**
- **Approach B – Minimal kerb changes**
- **Approach C – Road widened**
- **A mix of the above**

A combination of sections from Approaches A, B & C can be chosen as a preferred approach.

**Please provide your feedback on the survey by using the following link:**

[Complete the survey](#)



Once the preferred option is chosen, we will be asking the community for feedback on that decision.

# Connected Communities

## New North Road & Symonds Street upgrade

### Why is change needed?



To accommodate a growing Auckland, the New North Road and Symonds Street upgrade will improve:

- Safety – helping make Auckland’s transport system safe by eliminating harm to people.
- Provide more choices - providing and accelerating better travel choices.
- Make better connections - for people, places, goods, and services.
- Support growth - enabling and supporting Auckland’s growth, particularly in brownfield areas.
- Climate Change - improve the resilience and sustainability of the transport system, and significantly reducing the greenhouse gas it generates.



# Connected Communities

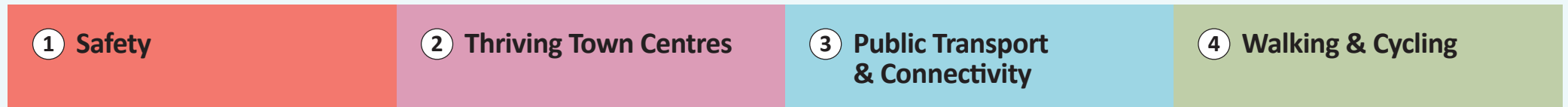
## New North Road & Symonds Street upgrade

### Pillars for Change



The four pillars - safety, thriving town centres, public transport and connectivity, and walking and cycling have been used throughout the development and design of the approaches. The pillars guide meeting the needs of local communities along the route.

Each Approach incorporates the pillars and associated benefits but each with a different weighting'. The core focus of the New North road upgrade is to promote change. The four key pillars and associated benefits have been used to shape the Approaches.



#### 1 Safety

37 deaths and serious injury crashes between 2015 – 2019.



70% of crashes involved pedestrians, cyclists and motorbike users.

14,000 tonnes of CO2 emitted from vehicles on the corridor each year.

Increasing population more houses.



#### 3 Public Transport & Connectivity

Currently, bus priority only provided for in the Central City along the corridor, contributing to increased congestion and travel times.



Due to population growth, it's predicted to take over 50 mins to get from Avondale to the City Centre by bus in 2028, unless changes are made.

#### 4 Walking & Cycling

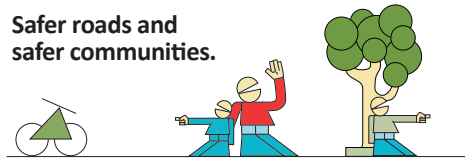
Only 250m of safe cycle infrastructure on 11km of road corridor.



#### The benefits of change

Working towards Vision Zero goals: zero deaths and serious injuries on our roads.

Safer roads and safer communities.



Town Centres attract growing numbers of people, to live, work and play.



Improved street environment and vibrant local shopping areas.

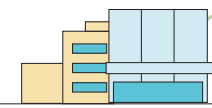
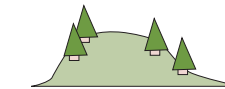


More choices and improved travel connections.



Reduced bus travel times.

Increased frequency and reliability of buses.



Cycle users feel safer. Improved cycle options.

People more likely to cycle with improved cycle options.



# Connected Communities

## New North Road & Symonds Street upgrade

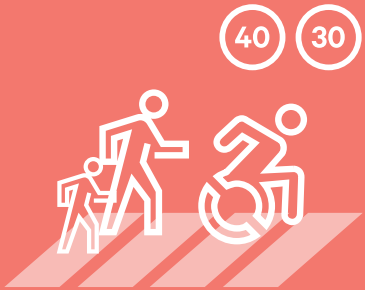
### The benefits of the changes



Although the benefits are similar across the all three Approaches, the key differences will be in cost, disruption and the narrowing of footpaths/connectivity of the cycle route.

The project aims to:

#### Safer corridor



Develop a safe corridor to reduce the number of Death and Serious Injury crashes.

#### Travel times



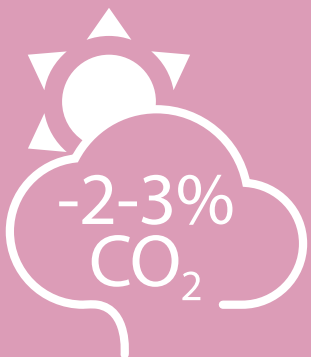
Improve bus journey times with travel time saving of approximately 10-15 minutes from Avondale to Symonds Street.

#### Cycle infrastructure



The development of safe and connected cycle infrastructure along the corridor could result in 1,500 - 2,500 new commuter cycle trips per day.

#### Reduce emissions



Reduce CO<sub>2</sub> emissions by 2-3% by providing more travel choices. Other considerations such as switching to electric vehicles will contribute to lower emissions.

#### Bus services



More convenient bus services may result in an additional 2,000 - 4,000 daily public transport trips.

#### Future growth



Improvements to the corridor will help accommodate future growth, supporting 40,000 additional people by 2041.