

Ngā painga o te huringa e marohitia ana



Kua iti iho ngā matenga me ngā wharanga kino



Kia haumarū ake mō ngā tamariki e hīkoi ana, e pahikara ana rānei ki te kura



Mā ngā painga pāpori me te pūtea ka penapena pea i te \$4.53m ora ka tiakina me te \$0.5m mō ia wharanga ka āraia



Ngā tepenga tere haumarū me te tika mō ngā āhuatanga o te rori



I ngā rori i huria ngā tepenga tere i te 30 o Hune 2020, kua heke ngā matenga mā te 67% e ai ki tētahi toharite o ngā tau e rima ki mua.

Whakangāwari



Ka roa ake te wā haere mō ētahi kaitaraiwa, ka iti iho i te 1-2 meneti i te nuinga o te wā

Neke atu i te 90% o ngā rori e marohitia ana e mātou ngā huringa, kua āta haere kē te nuinga o ngā kaitaraiwa ināianei i raro i te tepenga tere nā te āhua o rori me te taiao.

Matakitenga Kore

Kei te whai a Auckland Transport i te aronga Matakitenga Kore mō te haumarū rori. Arā, e whai ana mātou kia kua he matenga, he wharanga kore rānei ki tā tātou pūnaha ikiiki i mua o te tau 2050. E tautoko ana te whakarite kei te haumarū ngā tepenga tere, kei te tōtika puta noa i tā tātou whatunga rori e tautoko i ā mātou whāinga Matakitenga Kore.



36 ngā tāngata i mate i ngā rori o Tāmaki Makaurau i te tau 2020



489 ngā tāngata i whara kino i te tau 2020

Whakaputahia ō whakaaro, kei te whakarongo mātou

He mea nui te whakapai ake i te haumarū me te māia o tā tātou whatunga ikiiki. Kāore e taea te noho noa iho ina kitea e mātou kāore i te haumarū, i te tōtika rānei ngā tepenga tere. I te mea e noho ana koe, e taraiwa ana koe i ēnei rori, ā, e mōhio ana koe ki tēnei takiwā, ka taea e koe mātou te āwhina hei whakarite ka whāia e mātou te ara pai rawa.

Ka taea e ō whakaaro te whakaawe:

- Te tepenga tere hou ka whakatinanahia e mātou
- Te wāhanga o te rori ka whakarerekēhia e mātou
- Mēnā me whai ētahi atu whakaritenga i tua atu, kua rānei, te huri i te tepenga mō tētahi rori ake.

Hei whakaputa i ō whakaaro, me haere ki: [AT.govt.nz/haveyoursay](https://www.at.govt.nz/haveyoursay)

Mēnā he uua tō whakaoti i te puka tuihono, kei te hiahia rānei koe kia whakapuakina ō whakaaro kanohi ki te kanohi ki a AT, me waea mai ki 09 355 3553, īmēra mai rānei ki ATSpeedProgramme@AT.govt.nz

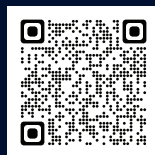
Me tuku mai ō whakaaro i mua o te 3 o Āperira 2022

Hono mai ki ā mātou hui tuihono

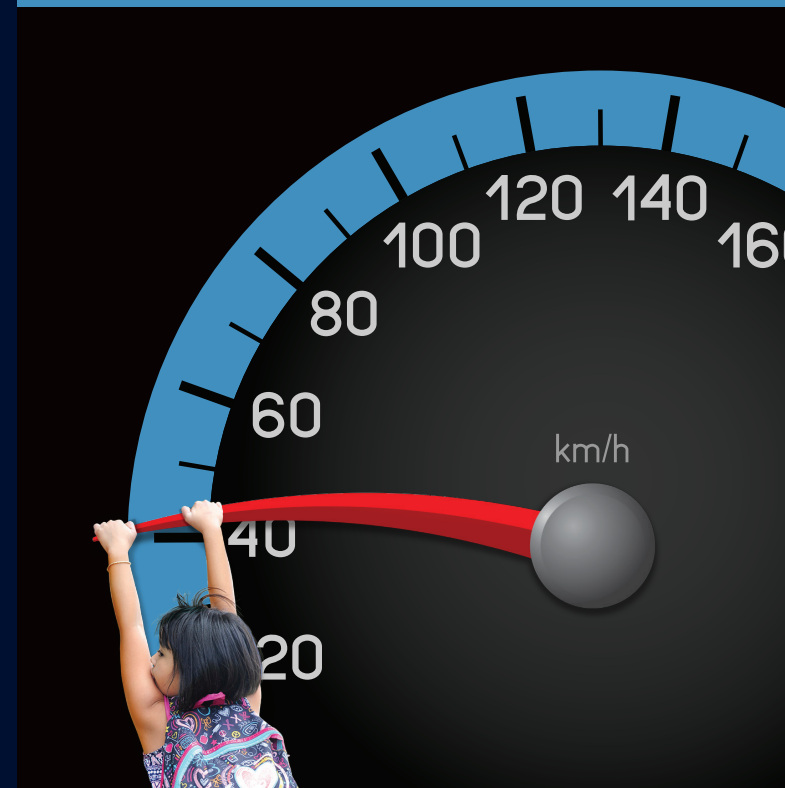
Kia noho haumarū te tangata i te wā Kowheori-19, kua nekehia e mātou ā mātou hui tūmatanui ki runga ipurangi.

Kua whakaritea e mātou ngā hui tuihono maha e whiwhi mōhio atu anō ai koe mō ngā kaupapa e marohitia ana me te tuku pātai ki te rōpū mahi.

Mō ētahi atu mōhiohio, me haere ki [AT.govt.nz/haveyoursay](https://www.at.govt.nz/haveyoursay), matawai rānei i te wāhere QR.



Whakaputahia ō whakaaro



Ngā huringa ki te tepenga tere e marohitia ana

Kaupapa Tere Haumarū - Wāhanga 3

Me tuku mai ō whakaaro i mua o te 3 o Āperira 2022



Kei roto te kaupapa Tere Haumarua a Auckland Transport i te rautaki haumarua rori nō te motu whānui (Rori ki te Kore). Ko te hua kia haumarua ake ngā rori o Aotearoa kia kore ai e mate, e whara kino rānei he tangata i ō tātou rori.

He aha ngā mahi?

E marohi ana a AT ki te whakataua i ngā tepenga tere pūmau i ngā rori neke atu i te 1,600 puta noa i Tāmaki Makaurau.

Ko te nuinga o ēnei huringa e pae ana i ngā kura, engari kei ngā marae i te taiwhenua, ngā rori taiwhenua nui te mōrea, ngā pokapū tāone me ētahi rori takiwā noho i Manurewa.

He maha ngā rori i Tāmaki Makaurau kāore i te tika ngā tepenga tere mō ngā āhuatanga, e whara ai, e mate ai rānei ngā tāngata o Tāmaki Makaurau i ō tātou rori.

Ko ēhea ngā rori?

Ko ngā huringa tepenga tere e marohitia ana ko te rori pea e noho ana koe, ngā rori rānei e haere ana koe. Ko ngā rori e marohitia ana ngā huringa ki ngā tepenga tere ko:



Ngā ērā e pae ana i ngā kura

Tata ki te 980 ngā rori e tata ana ki ngā kura 82 puta noa i Tāmaki Makaurau



Ngā rori o ngā pokapū tāone

Ngā pokapū tāone o Takapuna, Devoport me Glen Innes



Ngā rori taiwhenua

415 ngā rori taiwhenua. Kei roto i tēnei ko ngā wāhi pērā i Te Kūrae o Āwhitu, Waitākere, Okura, Stillwater, Waiwera me Whenuapai



Ngā rori takiwā kāinga

58 ngā rori i Manurewa



Ngā tono hapori

Tata ki te 41 ngā rori ko te nuinga kei Ponsonby me Rodney



Marae

18 ngā marae e tata ana ki ngā marae

Ngā wāhi e marohitia ana ngā tepenga tere

E kapi ana ngā huringa e marohitia ana i ngā tapatāone 113 puta noa i te rohe, i ngā poari ā-rohe e 20.

Kia mōhio ai ko ēhea ngā rori e marohitia ana e mātou ngā huringa ki ngā tepenga tere, me haere ki [AT.govt.nz/haveyoursay](https://at.govt.nz/haveyoursay)

Mēnā ka whakaaetia ngā huringa marohitia ana whai muri i ngā whakawhitiwhiti kōrero tūmatanui, ka mana hei te pito o te tau 2022.



E marohitia ana e AT tētahi tepenga tere o te 30km/h i te tāone o Oneroa i runga o Waiheke

He aha i tipakohia ai ēnei rori

Kāore ngā tepenga tere onāiane i ēnei rori i te haumarua, i te tika, me ki nā te āhua o ngā rori, pērā i ēnei:

- Ngā rori kore tahira
- Ngā rori whāiti, he whāiti ngā taha o te rori hoki/rānei
- Kāore he māka o ngā rori
- Te maha o ngā kōpikopiko me ngā huri
- Te maha o ngā tāngata i te takiwā kei te hīkoi, kei runga pahikara hoki.

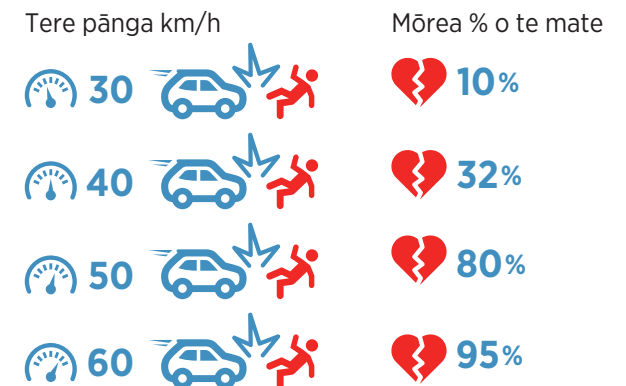
He maha ngā rori e marohitia ana e mātou kia huria ngā tepenga tere he tuinga i reira i mua. Ina kite mātou kāore ngā tepenga tere i te haumarua, i te tika, e herea ana mātou i raro i te ture kia marohitia he huringa.

Mō ētahi atu kōrero, me haere ki tā mātou paetukutuku.

Ka ora i ngā tere haumarua

Ahakoa te pūtaka o te tuinga, mā te tere e mōhio ai mēnā ka ora, ka mate rānei te tangata.

Ngā ōrau matenga me ngā wharanga



He tino rerekē ngā auau ora e ai ki ngā āhuatanga me ngā tirohanga maha. Ka whai a AT i tētahi aranga ārai e ai ki te putanga ki te ora o ā mātou kaiwhakamahi rori tino whakaraerae rawa. Ko ngā raraunga mai i te Pūrongo Rangahau AP-R560-18 i whakaputaina i te Maehe 2018 e Austroads - ko te Association of Australian and New Zealand Road Transport and Traffic Authorities.