

# On the Move

AMETI EASTERN BUSWAY | AN UPDATE OF WHAT'S AHEAD

**LATEST CONSTRUCTION MILESTONES**

## AN UPDATE FROM THE EASTERN BUSWAY TEAM

We hope you are all staying safe and well. As you may have seen, the AMETI Eastern Busway construction site was closed for several weeks after the Government moved to Alert Level 4. Auckland Transport has used the time in COVID-19 Alert Level 4 to plan the return to work on construction sites with a safety focused approach. Construction work restarted under Level 3 and we are following all Government health, safety and physical distancing measures to ensure the safety of our teams and the community. Before this happened, teams worked hard to make sure the site was safe and secure while work was paused. We will be progressively restarting work on different parts of the construction site over the coming weeks and months. We will keep you informed as work continues.

- 1 **New layout of Panmure intersection**
- 2 **Retaining wall on Lagoon Drive (Cnr Lagoon and Church Cres)**
- 3 **Installation of piers for new Busway bridge on Eastern side of Tamaki River**
- 4 **Work on the bridge approach on western side of Tamaki River**
- 5 **Concrete has been poured on multiple sections of the new busway**
- 6 **Retaining wall on Pakuranga Road**

如果您希望看到简报的中文版本，请访问 [AT.govt.nz/ameti](http://AT.govt.nz/ameti) 并转至翻译资源。

### WHAT'S IN THIS ISSUE?

# 1

**What's happening**

# 2

**Eastern Busway poised to offer thousands of jobs**

# 4

**Busway bridge**  
How we are progressing

**Let's get East Auckland moving**

# 1 What's happening



## What to expect to see happening over the next few months

**1 Continue work to reconfigure what was Panmure Roundabout into a four road, signalised intersection as well as;**

- a. Reconstruct road here
- b. Building the new busway pavement
- c. Streetscaping around the intersection.

**2 Continue work on Lagoon Drive sites including;**

- d. Work to reopen the Domain Road/Basin View Lane intersection
- e. Start building the Busway on Lagoon Drive from the intersection to Basin View Lane

- f. Complete and open the new Domain Road entrance to Lagoon Leisure Centre
- g. Complete the retaining wall
- h. Complete the retaining walls and streetscape around the intersection
- i. Install utility services
- j. Build the full bridge structure.

**3 Continue work on Pakuranga Road sites;**

- k. Open the Kerswill Place/Pakuranga Road intersection
- l. Build the Busway across intersection
- m. Close Tamaki Bay Drive permanently (will become cul de sac)
- n. Complete the connection of Latham Avenue and Dillimore Avenue, then turn Latham Avenue into a cul de sac.



# Community Noticeboard

Late last year, the team spent a few hours collecting rubbish around the area, talking with locals and answering questions about the project. This is part of the team's aim to give back to the community and become involved in the local area as a good neighbour. We look forward to the next clean up event in 2020.

We also had the pleasure of meeting loads of local people during a series of community BBQs late last year. We hope to be hosting some events over the coming 12 months and will announce details of these soon.



# Keep it to

# 30

# and keep us safe

We all want to get home safely each day and that includes our crew working onsite and locals who travel through the area. Please ensure you stay within the temporary speed limit of 30 km per hour through the construction site and we can all stay safe.



Let's get  
East Auckland  
moving

The Moala family live in the area and use this road  
**Find out more [AT.govt.nz/ameti](https://www.at.govt.nz/ameti)**

# 2 Eastern Busway poised to offer thousands of jobs

**Stage 1 of the AMETI Eastern Busway is progressing well and is due for completion in 2021. Our team have also been intensively planning stages 2,3 and 4 which is the busway and supporting infrastructure that runs between Pakuranga and Botany, including the Reeves Road Flyover. To find out more, check out our recent media release below!**

## **Game-changing \$450m Eastern Busway contract will generate thousands of jobs**

Thousands of new jobs and opportunities for businesses in the infrastructure sector are some of the positive outcomes that will result from Auckland Transport's announcement to proceed with a Registration of Interest (ROI) for an integrated design, engineering and construction partner consortium to

form an alliance with AT to deliver the remaining stages of the \$1.4b AMETI Eastern Busway project between Pakuranga and Botany.

The contract value for the construction phase alone will be \$450m with the total spend on stages 2,3 and 4 being \$700m. As the agency responsible for delivering the project, Auckland Transport will form the alliance partnership with the successful consortium.

***"The Eastern Busway is an important project which will help boost Auckland's post COVID-19 economy and create jobs. The Registration of Interest for stages 2-4 proceeding is another step closer to East Auckland finally getting the transport links it deserves and is part of our***

***Government's \$29 billion transport infrastructure plan with Auckland Council,"** said Minister of Transport Hon. Phil Twyford.*

***"It will help give East Aucklanders a congestion-free alternative to sitting in traffic and a less than 40 minute commute from Botany to the CBD"***

Auckland Mayor Phil Goff said the decision to proceed with the next three stages of the Eastern Busway makes the project one of the biggest in investment decisions across the whole of Auckland.

***"It represents a total spend of \$700 million, with huge benefits for expanding rapid public transit, cycling and walking as well as easing pressure on traffic congestion,"** he said.*



***“Coming as we recover from the COVID-19 induced international recession, it will create a much needed boost to jobs and incomes and assist Auckland’s economic recovery.”***

Howick Ward Councillors Sharon Stewart and Paul Young also welcomed the decision.

***“This project will be transformational for regional public transport,” Cr Stewart said. Cr Young added, “This investment provides certainty and will help tackle congestion on our transport network.***

Targeted for completion in 2025, stages 2, 3 and 4 of the project will extend the rapid transit network, high frequency busway currently under construction between Panmure and Pakuranga from Pakuranga Plaza through to Botany Town Centre. The project will include the congestion-free busway along Ti Rakau Drive, major stations at Pakuranga and Botany Town Centres, a flyover connecting Pakuranga Road with Waipuna Bridge, along with extensive cycling, walking, placemaking and environmental improvements.

AT will also include social procurement measures as part of the tendering process. This will require commitment from suppliers to deliver positive environmental, cultural, social and employment outcomes – such as local community employment and upskilling - during the design and construction phases.

***“In addition to the economic benefits of a large-scale contract being launched to the market, the concept of forming an alliance to fast-track overall design, consenting and construction of the whole project is also a major***

***factor in this procurement; with enhanced focus on improving community and transport outcomes while reducing impacts through greater industry collaboration and access to expertise and resources,” said Shane Ellison, Chief Executive of Auckland Transport. “This is the first time AT has adopted the alliance model and it is the best option for a project of this scale and complexity.”***

***“Forming an alliance is a tested tool for delivering complex large-scale projects across the world and some good local examples include the Waterview Connection, Northern Corridor Improvements and Wynyard Edge.”***

The Eastern Busway Alliance will be formed in late 2020, and will move quickly towards finalising design and working to lodgement of consent in 2021, followed by construction of the full works in 2022. The Alliance also provides the opportunity to target early enabling works in advance of the main construction works.

***“We have received uniquely intense interest from industry and look forward to progressing our conversations with these organisations very shortly,” said Mr Ellison. “We are committed to moving quickly.”***

Waka Kotahi NZ Transport Agency Director of Regional Relationships, Steve Mutton, says the AMETI Eastern Busway will create faster, more reliable and more connected public transport solutions for Auckland’s eastern communities.

***“The dedicated urban busway, with supporting cycling and walking paths, will provide transport options so people won’t have to use private vehicles to get to***

***work, school and to the shops. The busway will also connect with a future rapid transit network linking Botany to a rail and bus interchange at Puhinui and along SH20B to Auckland Airport.”***

Stage 1 of the project between Panmure and Pakuranga, including is currently under construction and targeted for completion in 2021.

**The Eastern Busway project is separated into four stages:**

- Panmure to Pakuranga (Stage 1)
- Pakuranga Town Centre and Reeves Flyover (Stage 2)
- Pakuranga to Botany Busway (Stage 3)
- Botany Town Centre Station (Stage 4)

**Key features to be implemented (Stages 1 to 4):**

- New signalised intersection in Panmure
- 7km busway between Panmure and Botany
- 7km of walking and cycling connections
- 2 new stations in Pakuranga and Botany
- 2 new bridges across Tamaki River and Pakuranga Creek
- New flyover connecting Pakuranga Road with Pakuranga Highway (aka South Eastern Highway)
- Safety improvements and key intersections
- Public art, improved landscaping and urban design features between Panmure and Botany.

# 3 What to expect for the busway bridge and how we are progressing

Quality urban design and landscaping, along with public art and improved connectivity for buses, people on bikes and pedestrians are all part of the Eastern Busway project. Over the coming months, we will show you in more detail how some of the public spaces and key features of the busway will look upon completion and how design, streetscape enhancements and spaces for people to enjoy the area are a focus of the project. Here are a few artist impressions on how the new bridge and surrounding area will look.

## Artist impression

Eastern landing and look out area



Significant progress has been made on the eastern side of the busway bridge



New bridge beams delivered

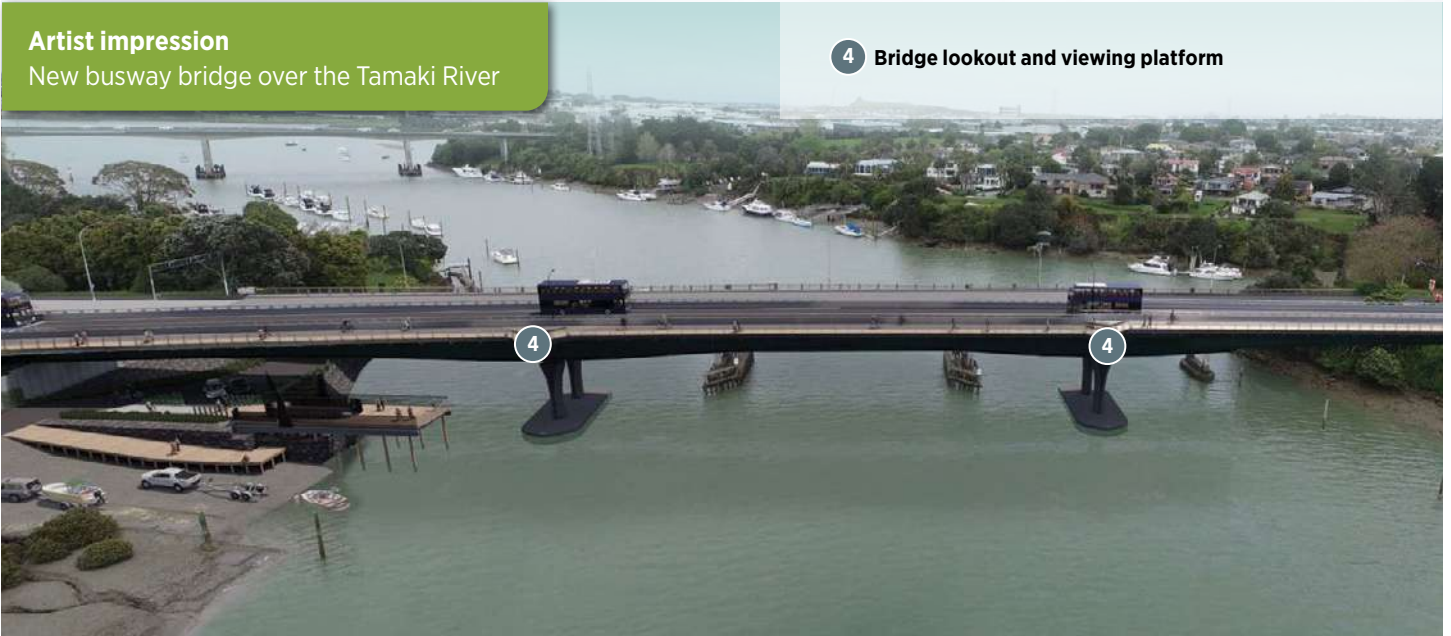


The steel bridge beams that will form the span of the new busway bridge were delivered to the construction in February. The beams, which span more than 200m in total, were delivered from Whangarei and will be slowly moved into position across the river over the coming months.

- Largest single steel beams ever to be fabricated in NZ.
- Three main beams; The river edge beams are 66.5m each and the middle beam is 73.5 m.
- Each beam weighs more than 100 tonne.

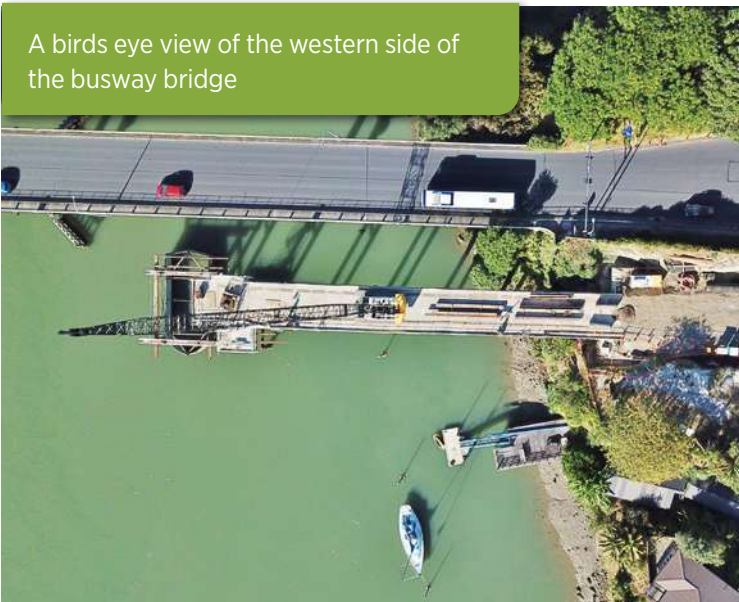
Artist impression

New busway bridge over the Tamaki River

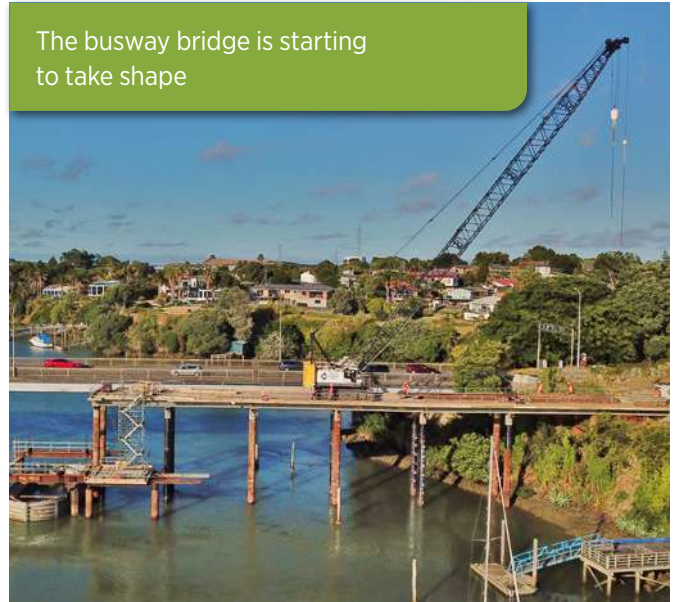


4 Bridge lookout and viewing platform

A birds eye view of the western side of the busway bridge



The busway bridge is starting to take shape



# 4 East Aucklanders changing travel behaviour during construction

We are doing everything we can to minimise the impact the AMETI Eastern Busway Stage 1 construction has on local traffic. Here are four of the most important ways we are helping.

## 1. Traffic monitoring

Auckland Transport has used GPS information and point-to-point camera technology to measure the flow of traffic caused by the roadworks.

We are doing this to help understand how we can make changes to traffic management plans and traffic light signals to maximise traffic flow during construction.

## 2. Improving travel options

In addition to monitoring traffic flow, in 2019, measures to minimise travel disruption caused by construction and provide more journey options were introduced. These included a temporary T2 lane on Pakuranga Road, new express bus services between Howick, Pakuranga and Panmure Station; as well as a Park and Ride at Lloyd Elsmore Park.



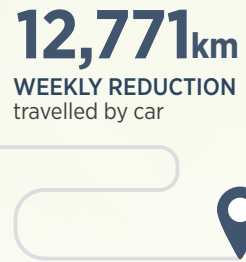




### 3. Personalised journey planning

Our personalised journey planning initiative has been underway since construction began last year and we are starting to see some exciting results. The initiative was started to assist East Aucklanders with advice and options that would help them travel around the area during construction.

Here are some of the results:



# East Aucklanders sign up to personalised journey plan service

Over 800 people have signed up for a personalised journey plan, a service provided by AT to help people create travel plans that work for their circumstances and routine. The adoption by local people to public transport alone has helped reduce over seven thousand kilometres worth of travel, from single occupancy vehicles every week. Follow the information below to sign up!

For travel advice and details about construction, visit [AT.govt.nz/ameti](https://www.at.govt.nz/ameti) or for a personalised journey plan and travel advice visit [AT.govt.nz/travelplaneast](https://www.at.govt.nz/travelplaneast)



**Emma Ng,**  
Local Business  
Owner

# 5 Kids corner

**Kia Ora!**  
 Have a go at these games  
 and learn heaps about the  
 Eastern Busway

## Find the words on the list.

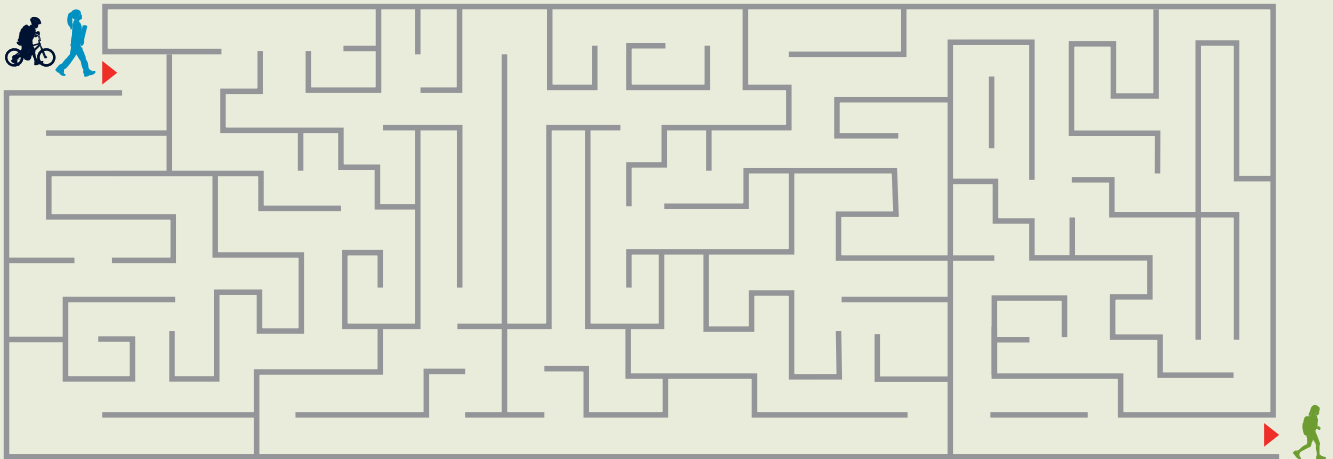
Words can go across or down and might even go backwards (SDRAWKCAB)!

E	A	F	E	T	R	A	I	N	I	C	B	T	J
S	A	A	N	G	I	S	X	R	C	E	R	A	H
O	P	S	O	R	T	A	P	T	A	K	I	M	N
V	S	S	T	E	E	T	T	L	R	I	D	A	O
F	O	L	L	E	A	T	H	E	G	B	G	K	I
N	Z	L	O	A	R	C	S	B	R	E	E	I	T
E	S	T	O	P	N	N	R	T	E	M	P	R	C
T	L	W	A	I	T	G	B	A	E	O	L	I	U
S	O	K	K	L	A	W	I	U	N	H	A	V	R
I	O	T	E	M	L	E	H	S	S	I	N	E	T
L	K	C	R	O	S	S	I	N	G	W	E	R	S
Y	S	T	A	Y	S	A	F	E	I	O	A	T	N
D	U	P	A	N	M	U	R	E	B	U	S	Y	O
S	E	A	T	B	E	L	T	D	N	U	O	R	C

- |                |          |            |             |             |
|----------------|----------|------------|-------------|-------------|
| EASTERN BUSWAY | BUS STOP | LISTEN CAR | GREEN TRAIN | PLAN BRIDGE |
| CONSTRUCTION   | BIKE     | WALK       | STAY SAFE   | SIGNALS     |
| PANMURE        | LOOK     | HELMET     | CROSSING    | SEATBELT    |
| TAMAKI RIVER   |          |            |             |             |



## Help these kids find their way



# EAST AUCKLAND'S FUTURE IN PROGRESS



Follow the progress at [AT.govt.nz/ameti](https://at.govt.nz/ameti)

**AUCKLAND'S FUTURE IN PROGRESS**

