

Auckland Transport Quarterly Indicators Report 2018/19

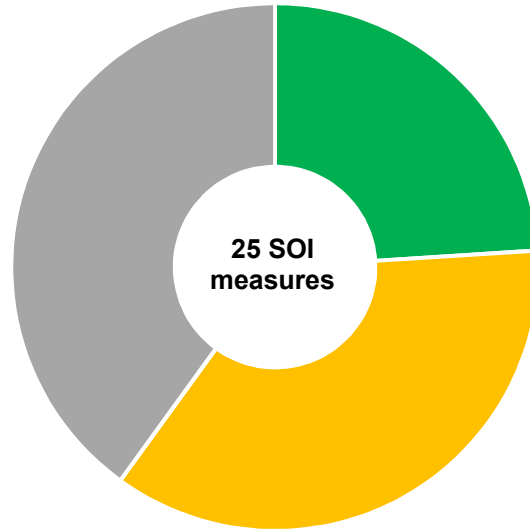
December 2019

1. Executive Summary**2. External Indicators****3. Performance by Key Priority**

- 3.1 Help people to travel safely
- 3.2 Improve access to frequent and attractive public transport
- 3.3 Encourage walking and cycling
- 3.4 Make the best use of existing transport networks
- 3.5 Manage the impacts of the transport system on the environment
- 3.6 Value for money
- 3.7 Local Board engagement

1 Executive summary

SOI performance summary



- On target to exceed performance measure (more than 2.5% above target)
- On target to meet performance measure (within +/- 2.5% of target)
- Not on target to meet performance measure (more than 2.5% below target)

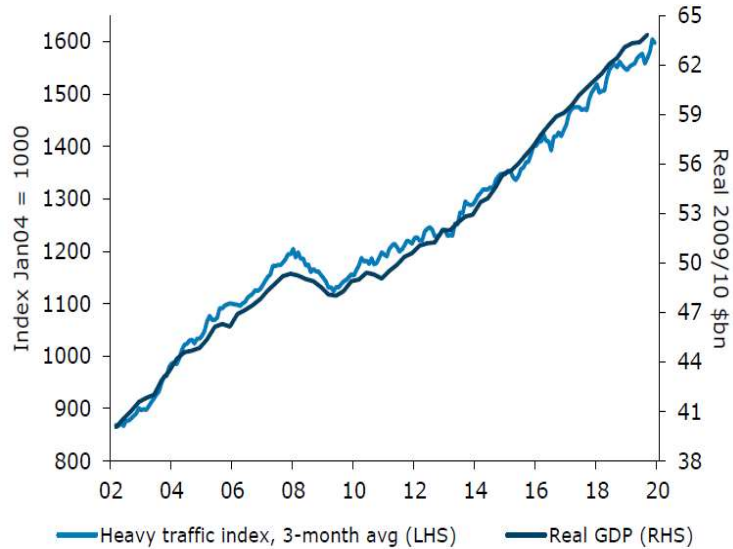
■ Data not available

1. Executive Summary**2. External Indicators****3. Performance by Key Priority**

- 3.1 Help people to travel safely
- 3.2 Improve access to frequent and attractive public transport
- 3.3 Encourage walking and cycling
- 3.4 Make the best use of existing transport networks
- 3.5 Manage the impacts of the transport system on the environment
- 3.6 Value for money
- 3.7 Local Board engagement

2. External indicators

2.1 ANZ Truckometer

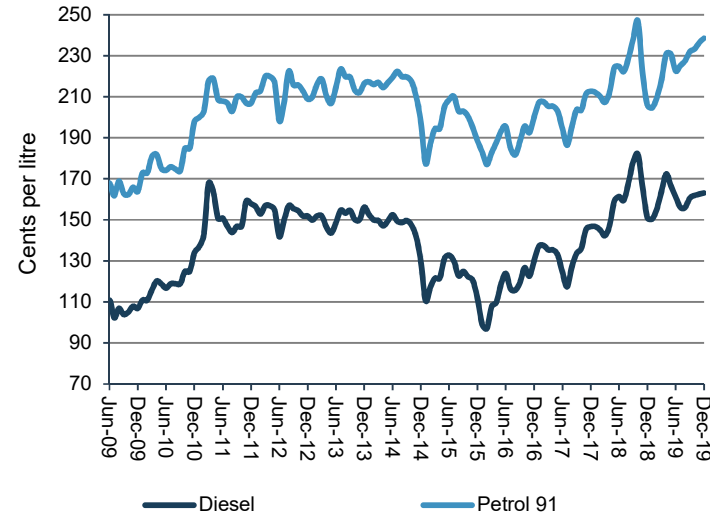


The ANZ Truckometer uses NZ Transport Agency traffic data as an indicator of national economic activity.

The Heavy Traffic Index fell 2.5% month on month, on top of a fall in November. Together with the Light Traffic Index (2.0% fall), this suggest annual GDP growth will bounce around the 2% mark into the middle of 2020.

Source: ANZ Truckometer

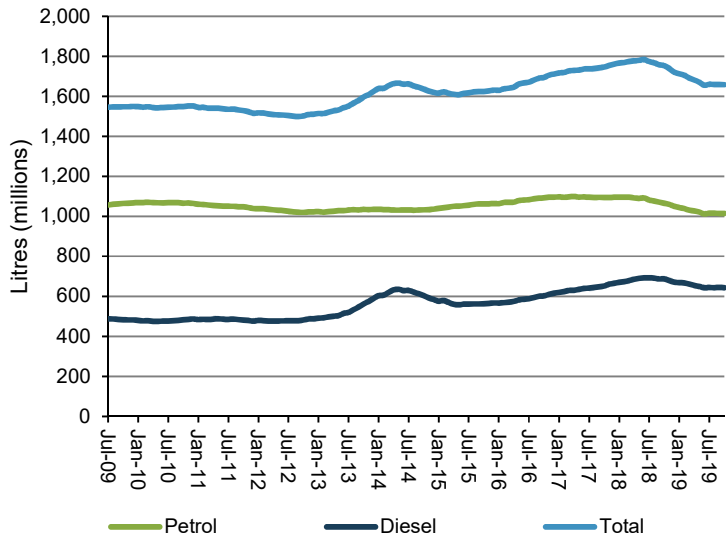
2.2 Monthly fuel prices



In December 2019 petrol prices were 15.8% higher and diesel prices were 7.9% higher compared with December 2018.

Source: Ministry of Business, Employment and Innovation

2.3 Auckland fuel sales (12 month rolling totals)

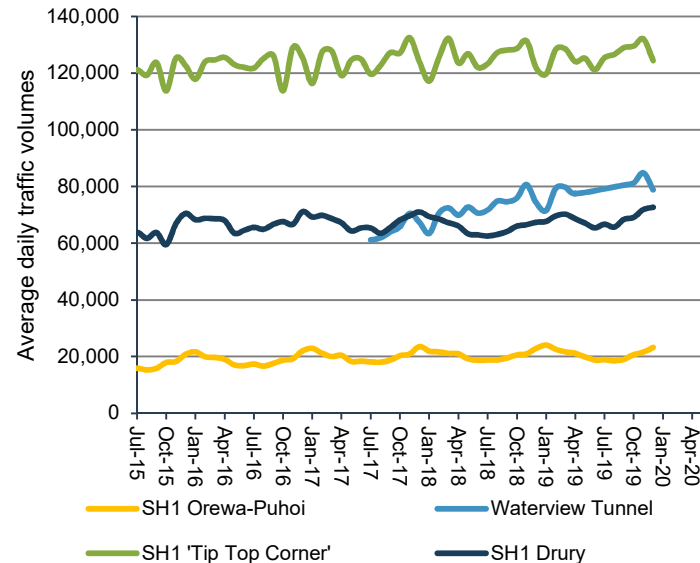


Total fuel sales for the 12 months to October 2019 were 5.4% lower than the 12 months to October 2018.

Petrol sales for the 12 months to October 2019 were 4.8% lower and diesel sales 6.4% lower than the 12 months to October 2018.

Source: Auckland Council fuel tax returns

2.4 State Highway average daily traffic volumes

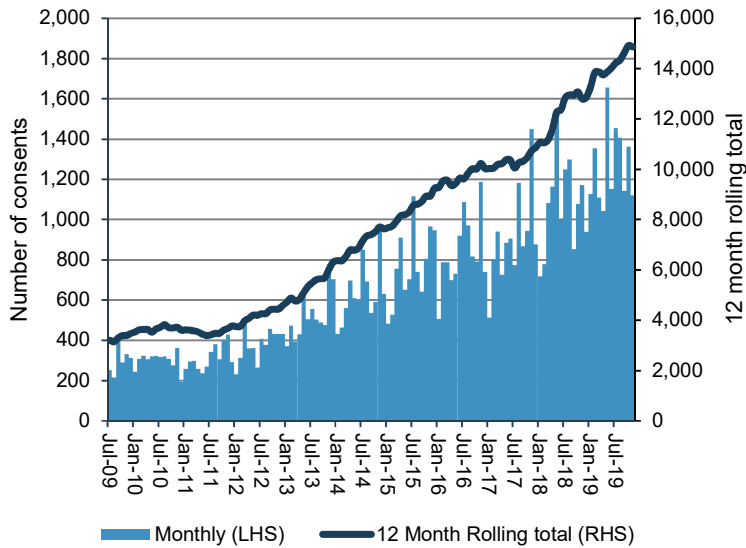


Compared to December 2018, average daily traffic volumes in December 2019 were up 6% on SH20 at Waterview, up 2% on SH1 at Tip Top Corner, up 8% on SH1 at Drury, and up 1% on SH1 between Orewa and Puhoi.

Source: NZ Transport Agency Data

2. External indicators

2.5 Auckland dwelling consents issued

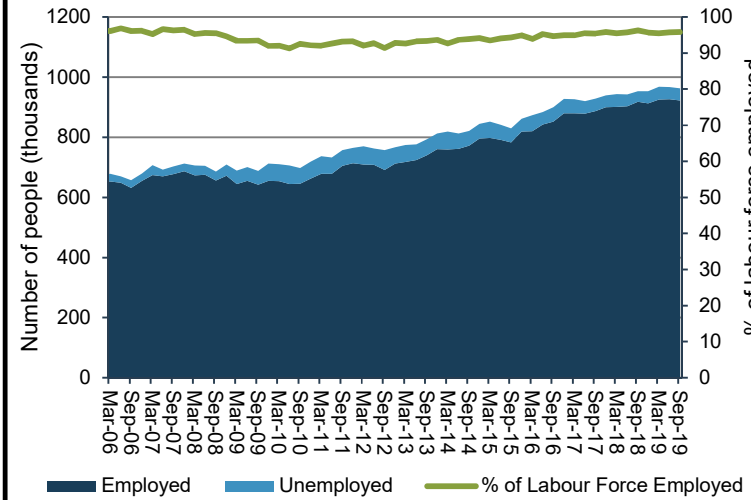


1,120 consents were issued in November 2019, a decrease of 4.4% on November 2018.

The 12 month rolling total to November 2019 was 14,866, 16.1% higher than the 12 months to November 2018.

Source: Statistics NZ

2.6 Auckland labour force



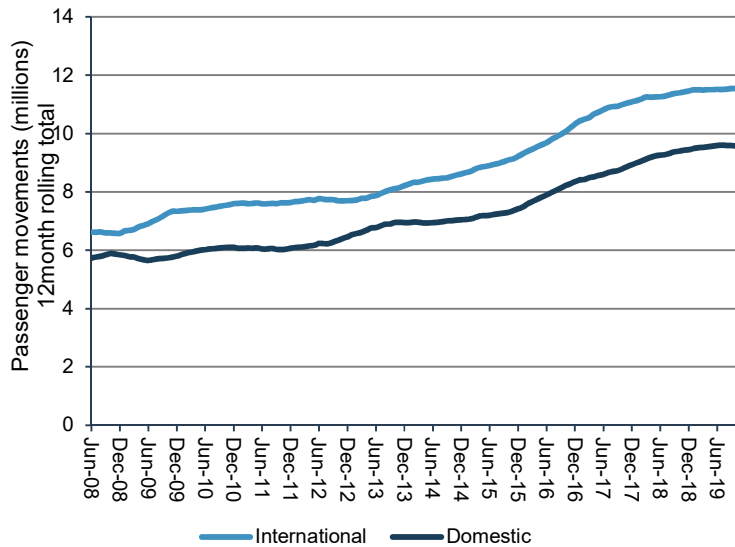
Auckland employment in the September 2019 quarter totalled 922,900, up 0.5% on September 2018.

This represents 95.9% of the labour force in employment.

These figures reflect a revision of data from the Household labour force survey to account for latest population estimates.

Source: Statistics NZ Quarterly Labour

2.7 Auckland Airport passenger movements

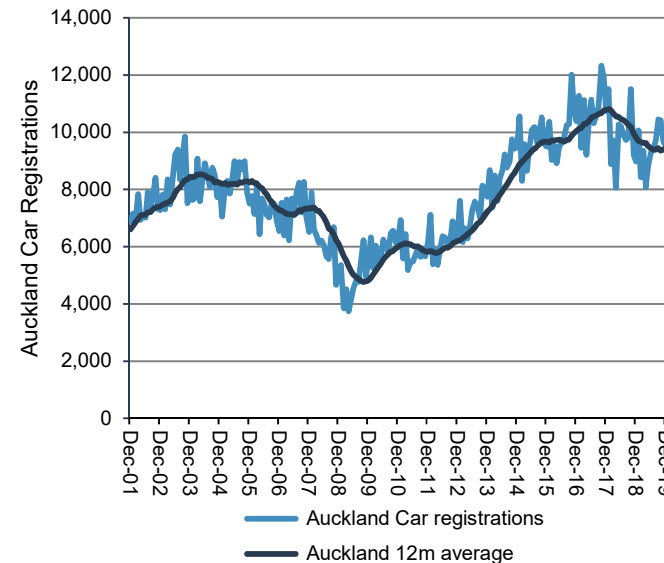


A total of 21.1 million passenger movements were recorded through Auckland Airport in the 12 months to October 2019, an increase of 1.5% on the year to October 2018.

In the month of October 2019, international passenger numbers were down 0.3% and domestic passengers were down 1.9% compared to October 2018.

Source: AIAL monthly traffic report

2.8 Auckland car registrations



This graph shows the number of cars first registered to an Auckland postal code.

There were 9,511 Auckland car registrations in December 2019, 5.9% more than December 2018.

The 12 month rolling average in December 2019 was 9,441, 3.8% lower than in December 2018. Car registrations outside of Auckland reduced by 4.7% in the same time period.

Source: NZ Transport Agency Vehicle registration Centre

1. Executive Summary

2. External Indicators

3. Performance by Key Priority

3.1 Help people to travel safely

3.2 Improve access to frequent and attractive public transport

3.3 Encourage walking and cycling

3.4 Make the best use of existing transport networks

3.5 Manage the impacts of the transport system on the environment

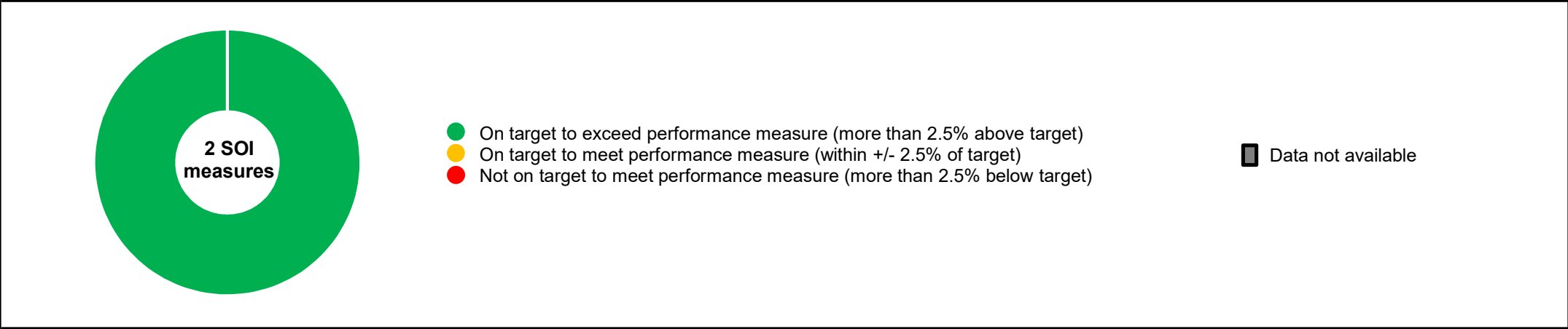
3.6 Value for money

3.7 Local Board engagement

3.1 Help people to travel safely

Key priority	Measure	SOI 2019/20 Year End Target	Quarter 1	Quarter 2	Quarter 3	Quarter 4	Measure Commentary
Help people to travel safely	Number of high risk intersections and sections of road addressed by Auckland Transport's safety programme	10		●			YTD total: 10.
	Change from the previous year in the number of fatalities and serious injury crashes on the local road network, expressed as a number	Reduce by at least 18 2019 year-end target: 663	●	●			The 12 month total to September 2019 is 538.

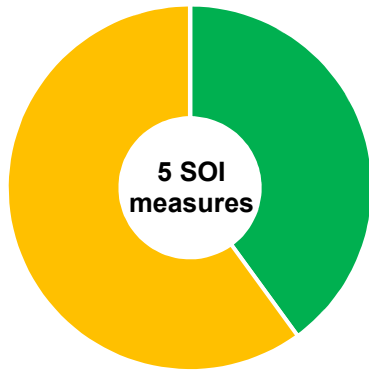
Summary



3.2 Improve access to frequent and attractive public transport

Key priority	Measure	SOI 2019/20 Year End Target	Quarter 1	Quarter 2	Quarter 3	Quarter 4	Measure Commentary
Improve access to frequent and attractive public transport	Total public transport boardings	103.6 million	●	●			12 month boardings totalled 103,167,519 (3.0% above target).
	Total rail boardings	22.30 million	●	●			12 month rail boardings totalled 21,884,179 (0.5% above target).
	Boardings on rapid or frequent network (rail, busway, FTN bus)	Increase at faster rate than total boardings	●	●			RTN + FTN boardings grew faster than total boardings, with 11.2% growth on 2018/19.
	Percentage of public transport passengers satisfied with their public transport service	85%	●	●			Overall satisfaction with public transport services (91%) is unchanged compared to the result from last quarter (91%).
	Public transport punctuality (weighted across all modes)	95.0%	●	●			YTD average: 97.5%.

Summary



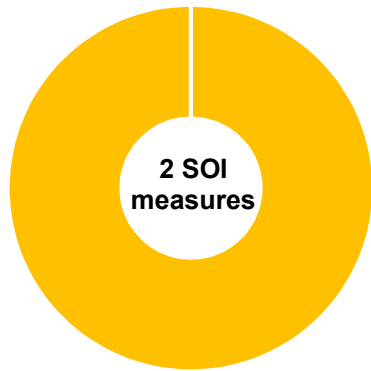
- On target to exceed performance measure (more than 2.5% above target)
- On target to meet performance measure (within +/- 2.5% of target)
- Not on target to meet performance measure (more than 2.5% below target)

■ Data not available

3.3 Encourage walking and cycling

Key priority	Measure	SOI 2019/20 Year End Target	Quarter 1	Quarter 2	Quarter 3	Quarter 4	Measure Commentary
Encourage walking and cycling	Kilometres of new cycleway added to the regional cycle network	10 km	●	●			YTD total: 2.2 km.
	Number of cycle movements past selected count sites	3.826 million	●	●			YTD total: 1,727,977.

Summary



- On target to exceed performance measure (more than 2.5% above target)
- On target to meet performance measure (within +/- 2.5% of target)
- Not on target to meet performance measure (more than 2.5% below target)

■ Data not available

3.4 Make the best use of existing transport networks

Key priority	Measure	SOI 2019/20 Year End Target	Quarter 1	Quarter 2	Quarter 3	Quarter 4	Measure Commentary
Make the best use of existing transport networks	Average AM peak arterial productivity	27,500	●	●			The 12 month rolling average to December 2019 is 32,941.
	Proportion of the freight network operating at Level of Service C or better during the inter-peak	85%	●	●			The 12 month rolling average to December 2019 is 93%.
	Active and sustainable transport mode share at schools where the Travelwise programme is implemented	40%					2019 survey result: 41%.
	Active and sustainable transport mode share for morning peak commuters where the Travelwise Choices programme is implemented	40%					2019 survey result: 35%.

Summary



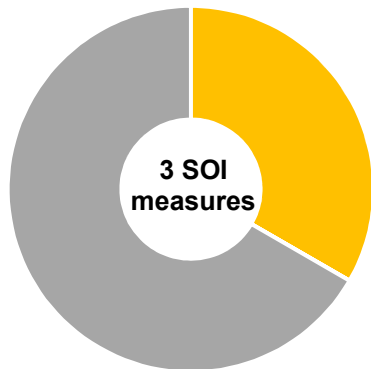
- On target to exceed performance measure (more than 2.5% above target)
- On target to meet performance measure (within +/- 2.5% of target)
- Not on target to meet performance measure (more than 2.5% below target)

■ Data not available

3.5 Manage the impacts of the transport network on the environment

Key priority	Measure	SOI 2019/20 Year End Target	Quarter 1	Quarter 2	Quarter 3	Quarter 4	Measure Commentary
Manage the impacts of the transport network on the environment	Number of buses in the Auckland bus fleet classified as low emission	5		●			There are currently three low emission buses on the network. This is expected to meet or exceed the target by the end of the year.
	Reduction in CO2e (emissions) generated annually by Auckland Transport corporate operations (from 2017/18 baseline)	7%					New measure.
	Percentage of Auckland Transport streetlights that are energy efficient LED	56%					New measure.

Summary



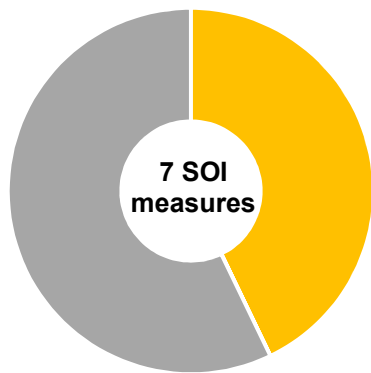
- On target to exceed performance measure (more than 2.5% above target)
- On target to meet performance measure (within +/- 2.5% of target)
- Not on target to meet performance measure (more than 2.5% below target)

■ Data not available

3.6 Value for money

Key Priority	Measure	SOI 2019/20 Year End Target	Quarter 1	Quarter 2	Quarter 3	Quarter 4	Measure Commentary
Value for money	Public transport farebox recovery	43% - 46%	●	●			Total public transport farebox recovery to December 2019 was 42.4%.
	Proportion of road assets in acceptable condition (as defined by Auckland Transport's AMP)	95%					The 2019/20 result was 94%.
	Proportion of footpaths in acceptable condition (as defined by Auckland Transport's AMP)	95%					The 2019/20 result was 96%.
	Road maintenance standards (ride quality) as measured by smooth travel exposure (STE) for all urban roads	81%					The 2019/20 result for urban roads was 87%.
	Road maintenance standards (ride quality) as measured by smooth travel exposure (STE) for all rural roads	92%					The 2019/20 result for rural roads was 94%.
	Percentage of the sealed local road network that is resurfaced	5.8%	●	●			YTD total: 140.9 km (2.1%). Although currently below forecast, this is expected to meet target by the end of the year.
	Percentage of customer service requests relating to roads and footpaths which receive a response within specified time frames	85%	●	●			YTD average: 85.0%.

Summary



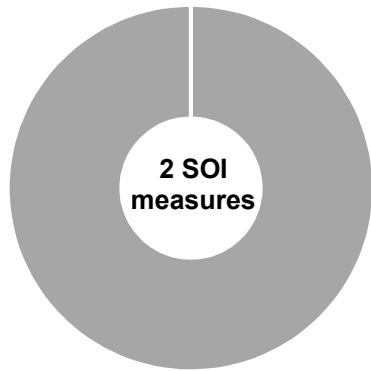
- On target to exceed performance measure (more than 2.5% above target)
- On target to meet performance measure (within +/- 2.5% of target)
- Not on target to meet performance measure (more than 2.5% below target)

■ Data not available

3.7 Local Board engagement

Key priority	Measure	SOI 2019/20 Year End Target	Quarter 1	Quarter 2	Quarter 3	Quarter 4	Measure Commentary
Local Board engagement	Percentage of Local Board members satisfied with AT engagement	Reporting to Local Board: 70%					2019 result: 41%. The next survey results are expected to be available in late 2020.
		Consultation with Local Board: 70%					2019 result: 35%. The next survey results are expected to be available in late 2020.

Summary



- On target to exceed performance measure (more than 2.5% above target)
- On target to meet performance measure (within +/- 2.5% of target)
- Not on target to meet performance measure (more than 2.5% below target)

Data not available