

Auckland Transport Quarterly Indicators Report 2018/19

June 2019



1. Executive summary**2. External indicators****3. Performance by Key Priority**

3.1 Deliver an efficient and effective transport system

3.2 Focus on the customer

3.3 Improve the safety of the transport system

3.4 Ensure value for money across AT's activities

1 Executive summary

SOI performance summary



- On target to exceed performance measure (more than 2.5% above target)
- On target to meet performance measure (within +/- 2.5% of target)
- Not on target to meet performance measure (more than 2.5% below target)

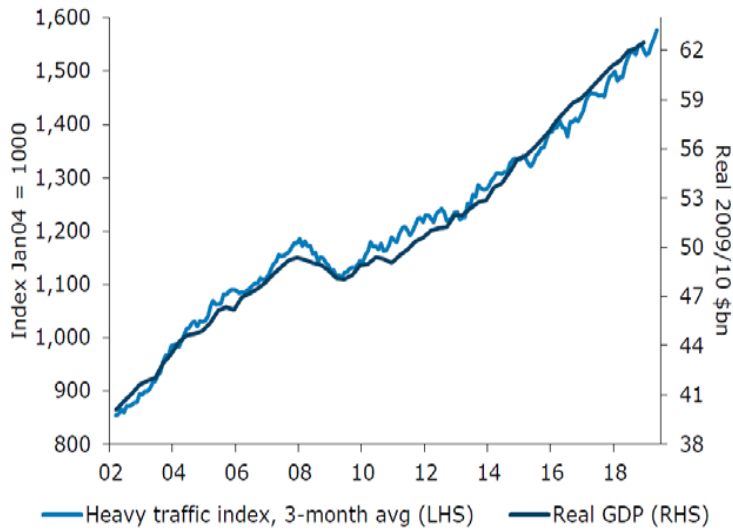
■ Data not available

1. Executive summary**2. External indicators****3. Performance by Key Priority**

- 3.1 Deliver an efficient and effective transport system
- 3.2 Focus on the customer
- 3.3 Improve the safety of the transport system
- 3.4 Ensure value for money across AT's activities

2. External indicators

2.1 ANZ Truckometer

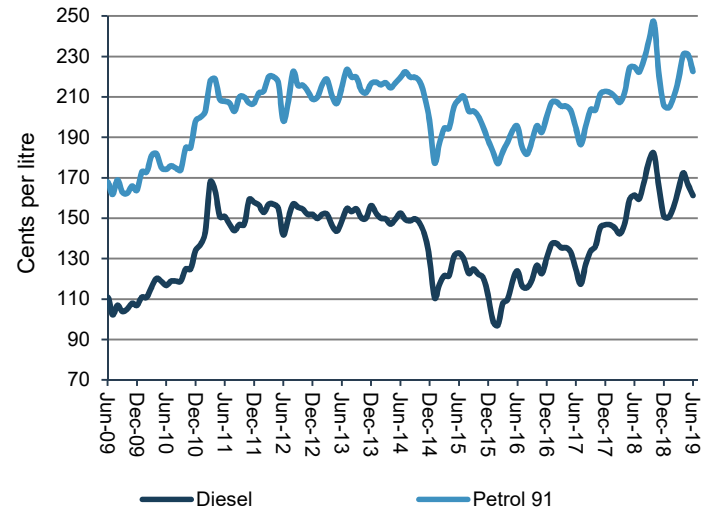


The ANZ Truckometer uses NZ Transport Agency traffic data as an indicator of national economic activity.

The Heavy Traffic Index rose 0.8% m/m and the Light Traffic 0.9% m/m. Growth in traffic may be finding a floor, consistent with expectations that economic growth will bottom out around the middle of the year.

Source: ANZ Truckometer

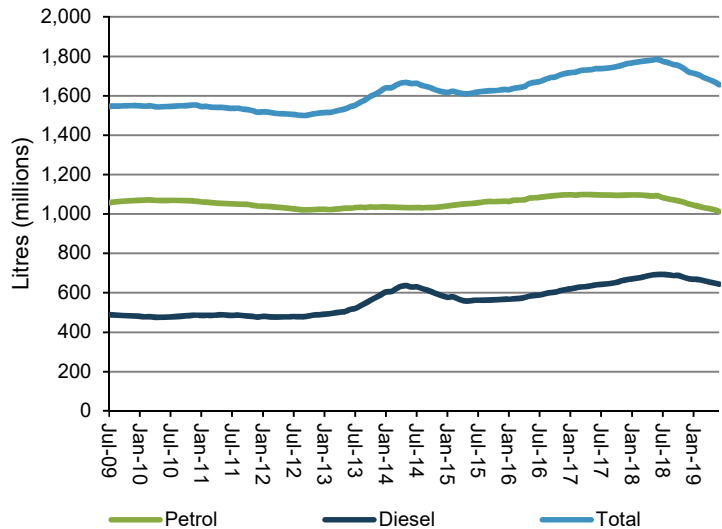
2.2 Monthly fuel prices



In June 2019 petrol prices were 1.0% lower and diesel prices were 0.1% lower compared to June 2018.

Source: Ministry of Business, Employment and Innovation

2.3 Auckland fuel sales (12 month rolling totals)

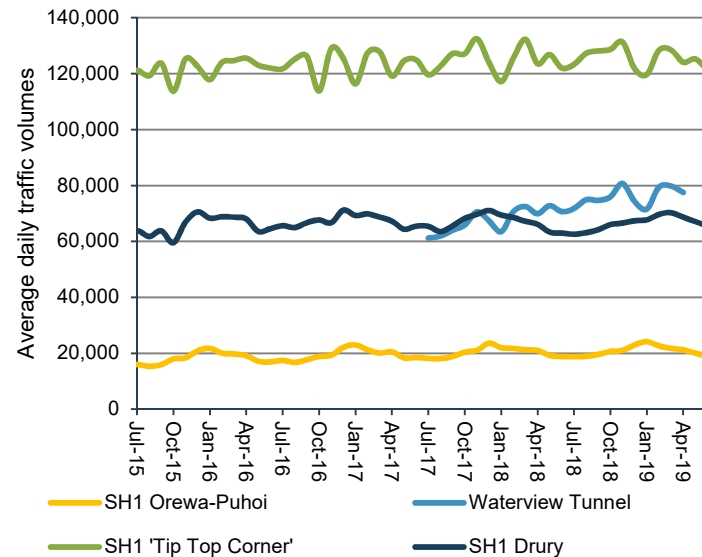


Total fuel sales for the 12 months to June 2019 were 7.2% lower than the 12 months to July 2018.

Petrol sales for the 12 months to July 2019 were 7.3% lower and diesel sales 7.1% lower than the 12 months to July 2018.

Source: Auckland Council fuel tax returns

2.4 State Highway average daily traffic volumes



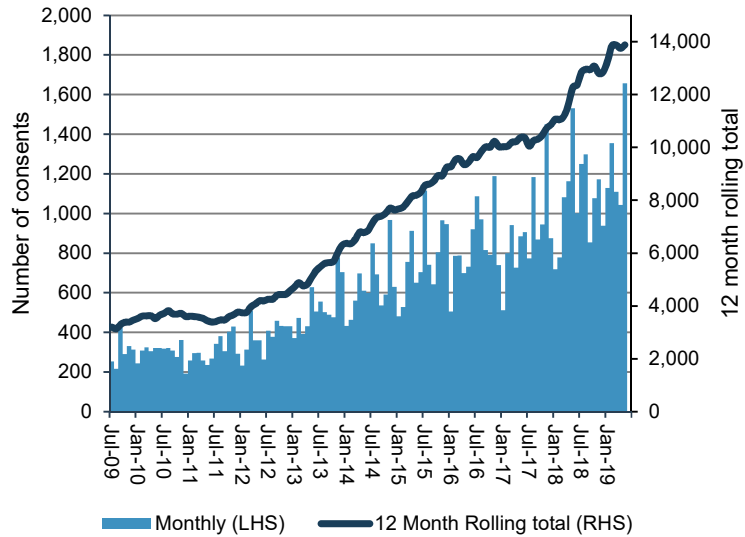
Compared to June 2018, average daily traffic volumes in June 2019 were down 1% on SH1 at Tip Top Corner, up 4% on SH1 at Drury, and unchanged on SH1 between Orewa and Puhoi.

Traffic volumes at Waterview Tunnel will be updated when more data is available.

Source: NZ Transport Agency Data

2. External indicators

2.5 Auckland dwelling consents issued

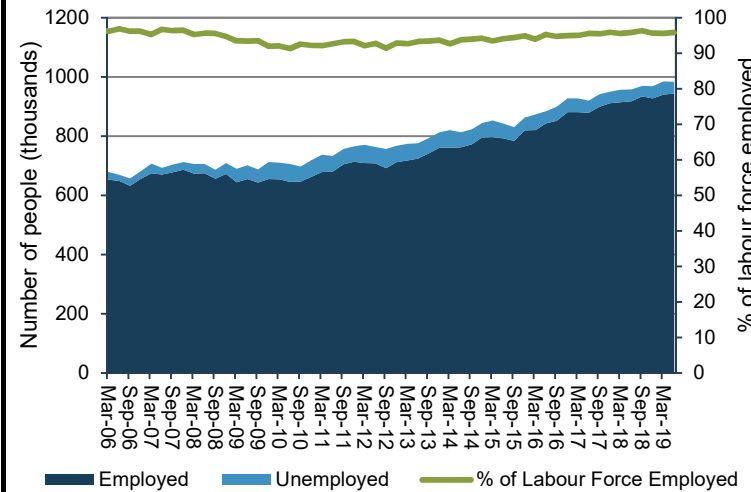


1,657 consents were issued in May 2019, an increase of 8.3% on May 2018. This was the most dwelling consents issued in a single month in Auckland since October 2002.

The 12 month rolling total to May 2019 was 13,881, 13.1% higher than the 12 months to May 2018.

Source: Statistics NZ

2.6 Auckland labour force

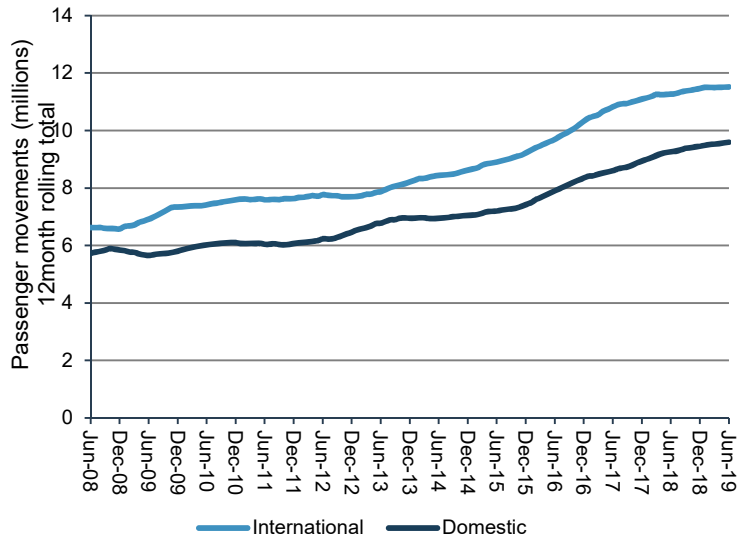


Auckland employment in the June 2019 quarter totalled 943,300, up 2.9% on June 2018.

This represents 95.9% of the labour force in employment.

Source: Statistics NZ Quarterly Labour Force Survey

2.7 Auckland Airport passenger movements

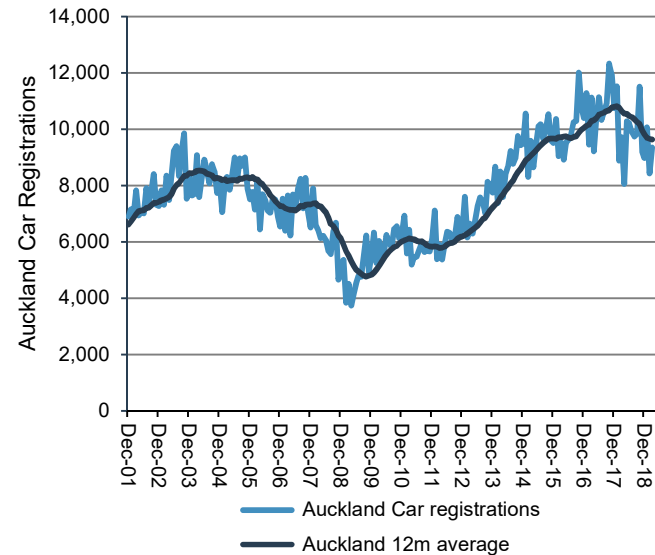


A total of 21.1 million passenger movements were recorded through Auckland Airport in the 12 months to June 2019, an increase of 2.8% on the year to June 2018.

In the month of June 2019, international passenger numbers were up 1.2% and domestic passengers up 3.4% compared to June 2018.

Source: AIAL monthly traffic report

2.8 Auckland car registrations



This graph shows the number of cars first registered to an Auckland postal code.

There were 9,294 Auckland car registrations in June 2019, 8.9% less than June 2018.

The 12 month rolling average in June 2019 was 9,434, 9.8% lower than in June 2018. Car registrations outside of Auckland decreased by 8.0% over this same period.

Source: NZ Transport Agency Vehicle registration Centre

1. Executive Summary**2. External Indicators****3. Performance by Key Priority**

3.1 Deliver an efficient and effective transport system

3.2 Focus on the customer

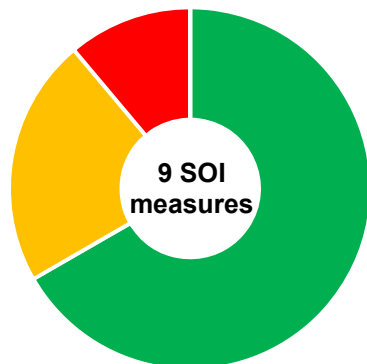
3.3 Improve the safety of the transport system

3.4 Ensure value for money across AT's activities

3.1 Deliver an efficient and effective transport system

Key priority	Measure	SOI 2018/19 Year End Target	Quarter 1	Quarter 2	Quarter 3	Quarter 4	Measure Commentary
Deliver an efficient and effective transport system	Total public transport boardings	96.30 million	●	●	●	●	12 month boardings totalled 100,751,945 (4.6% above target).
	Total rail boardings	21.11 million	●	●	●	●	12 month rail boardings totalled 21,392,902 (1.3% above target).
	Boardings on rapid or frequent network (rail, busway, FTN bus)	Increase at faster rate than total boardings	●	●	●	●	RTN + FTN boardings grew faster than total boardings, with 21.5% growth on 2017/18.
	Kilometres of new cycleway added to the regional cycle network	10 km	●	●	●	●	2018/19 completed: 9.65 km.
	Number of cycle movements past selected count sites	3.644 million	●	●	●	●	2018/19 total: 3,771,332.
	Active and sustainable mode share at schools where Travelwise programme is implemented	40%				●	The 2018/19 result was 47%.
	Active and sustainable mode share for morning peak commuters where a Travelwise Choices programme is implemented	40%				●	The 2018/19 result was 72%.
	Average AM peak period lane productivity across 30 monitored arterial routes	21,000	●	●	●	●	2018/19 average: 32,863.
	Proportion of the freight network operating at Level of Service C or better during the inter-peak	85%	●	●	●	●	2018/19 average: 93%.

Summary



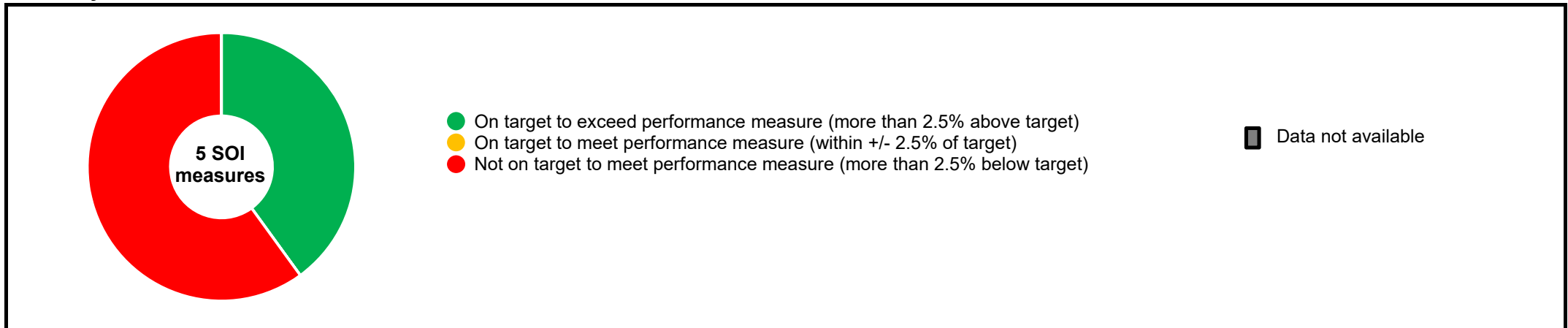
- On target to exceed performance measure (more than 2.5% above target)
- On target to meet performance measure (within +/- 2.5% of target)
- Not on target to meet performance measure (more than 2.5% below target)

■ Data not available

3.2 Focus on the customer

Key priority	Measure	SOI 2018/19 Year End Target	Quarter 1	Quarter 2	Quarter 3	Quarter 4	Measure Commentary	
Focus on the customer	Percentage of public transport passengers satisfied with their public transport service	85%	●	●	●	●	Overall satisfaction with public transport services (91%) is unchanged compared to the result from last quarter (91%).	
	Public transport punctuality (weighted across all modes)	94.5%	●	●	●	●	YTD average: 97.0%.	
	Percentage of Local Board members satisfied with AT engagement	Reporting to Local Board: 70%					●	2019 survey result: 41%.
		Consultation with Local Board: 70%					●	2019 survey result: 35%.
	Percentage of customer service requests relating to roads and footpaths which receive a response within specified time frames	85%	●	●	●	●	Target not met (12 month rolling average = 82.3%).	

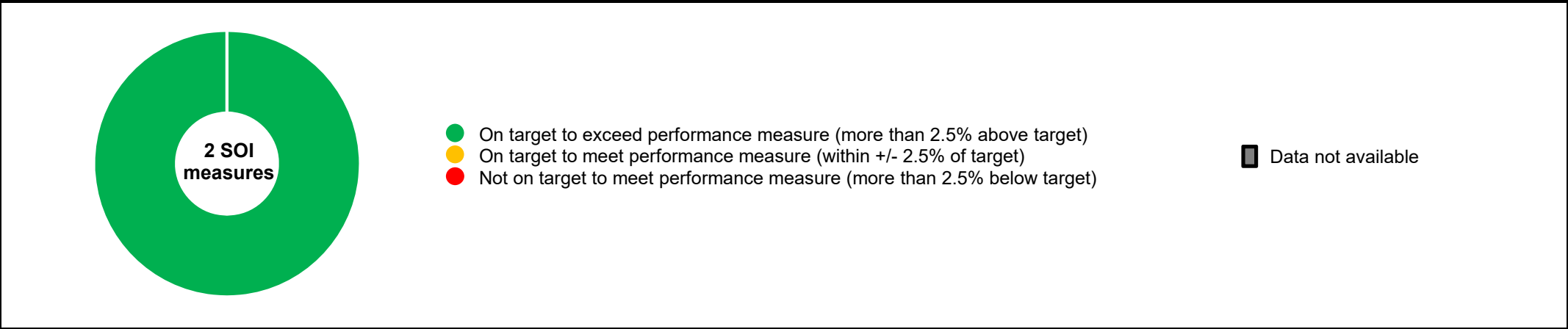
Summary



3.3 Improve the safety of the transport system

Key priority	Measure	SOI 2018/19 Year End Target	Quarter 1	Quarter 2	Quarter 3	Quarter 4	Measure Commentary
Improve the safety of the transport system	Number of high risk intersections and sections of road addressed by Auckland Transport's safety programme	10			●	●	2018/19 total: 11.
	Change from the previous year in the number of fatalities and serious injury crashes on the local road network, expressed as a number	Reduce by at least 9	●	●	●	●	The 12 month total to December 2018 is 553, which is 19% lower than the 2018 target of 681.

Summary



3.4 Ensure value for money across AT's activities

Key Priority	Measure	SOI 2018/19 Year End Target	Quarter 1	Quarter 2	Quarter 3	Quarter 4	Measure Commentary
Ensure value for money across AT's activities	Public transport farebox recovery	47-50%	●	●	●	●	Total public transport farebox recovery for 2018/19 was 43.4%.
	Proportion of road assets in acceptable condition (as defined by Auckland Transport's AMP)	95%			●		The 2018/19 result was 94%.
	Proportion of footpaths in acceptable condition (as defined by Auckland Transport's AMP)	95%			●		The 2018/19 result was 96%.
	Road maintenance standards (ride quality) as measured by smooth travel exposure (STE) for all urban roads	81%			●		The 2018/19 result for urban roads was 87%.
	Road maintenance standards (ride quality) as measured by smooth travel exposure (STE) for all rural roads	92%			●		The 2018/19 result for rural roads was 94%.
	Percentage of the sealed local road network that is resurfaced	6.0%	●	●	●	●	2018/19 result: 5.5%.

Summary



- On target to exceed performance measure (more than 2.5% above target)
- On target to meet performance measure (within +/- 2.5% of target)
- Not on target to meet performance measure (more than 2.5% below target)

■ Data not available