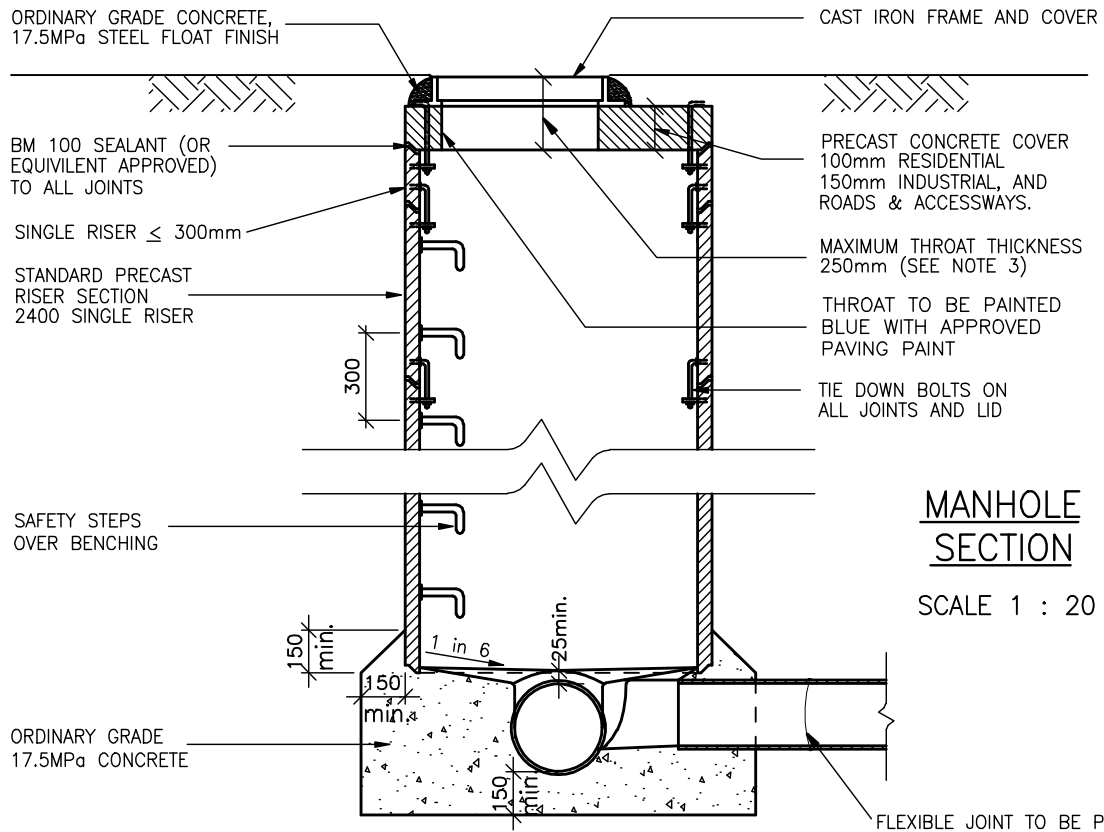


**CAST IRON FRAME & COVER**  
SCALE 1 : 20



**MANHOLE SECTION**  
SCALE 1 : 20

**NOTES:**

1. For pipes greater than 600mm $\phi$ , manholes are to be specifically designed, refer to SD 4.6.
2. For pipes 1200 $\phi$  & greater, manholes to be factory fabricated bends with riser off-taker.
3. May increase to 350mm with heavy duty lids where fixed surface levels are to be matched.
4. For Manholes larger than 1800mm diameter, four holding down bolts are required.
5. For special requirements for connecting PVC pipes refer to clause 4.3.12.10

ENGINEERING  
STANDARDS MANUAL

ISSUE 4.6  
NOVEMBER 2008

**STORMWATER  
MANHOLE**

STANDARD DETAIL

**SD 4.03**