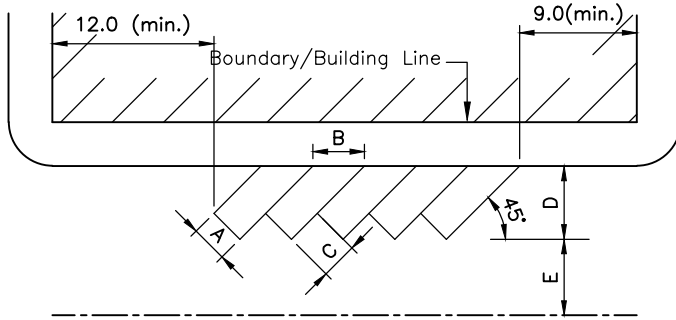


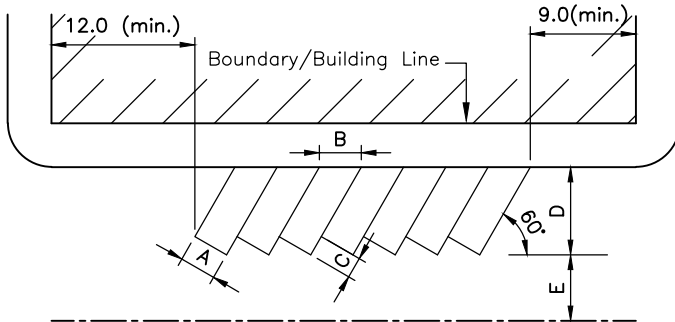
E = 3.5 one way aisle  
E = 5.5 two way aisle

NOTES

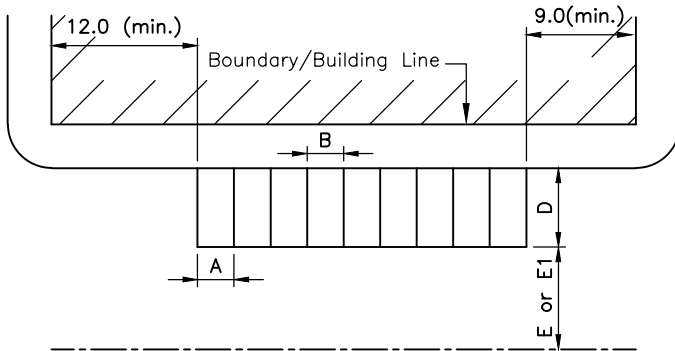
1. When vehicles overhang the end of the bay (eg past the kerb) D may be reduced to Dx.
2. Tail-in parking bays slope in opposite direction, but are not preferred and are not acceptable for public spaces.
3. E = min. aisle width for regular users.
4. E1 = min. aisle width for casual users.
5. NZ Building Code D1/AS1 also provides Acceptable solution.
6. Parallel Parking shown applicable to parking spaces on major roads within town centres.



A	B	C	D	Dx	E
2.4	3.4	2.4	5.5	5.0	4.0
2.5	3.5	2.5	5.6	5.1	3.8
2.6	3.7	2.6	5.65	5.15	3.5
2.7	3.8	2.7	5.75	5.25	3.5



A	B	C	D	Dx	E
2.4	2.75	1.4	5.9	5.25	4.8
2.5	2.9	1.45	5.95	5.3	4.5
2.6	3.0	1.5	5.95	5.35	4.3
2.7	3.1	1.55	6.0	5.4	4.0



\*Where more than one disability carpark is provided, this dimension can be reduced in accordance with the NZ Building Code & AS/NZS 4121

Disability park\*

A	B	C	D	Dx	E	E1
2.4	2.4	-	5.4	5.0	7.5	
2.5	2.5	-	5.4	5.0	7.0	8.0
2.6	3.7	-	5.4	5.0	6.6	7.0
2.7	3.8	-	5.4	5.0	6.2	6.0
3.6	3.6	-	5.4	5.0	8.0	8.0