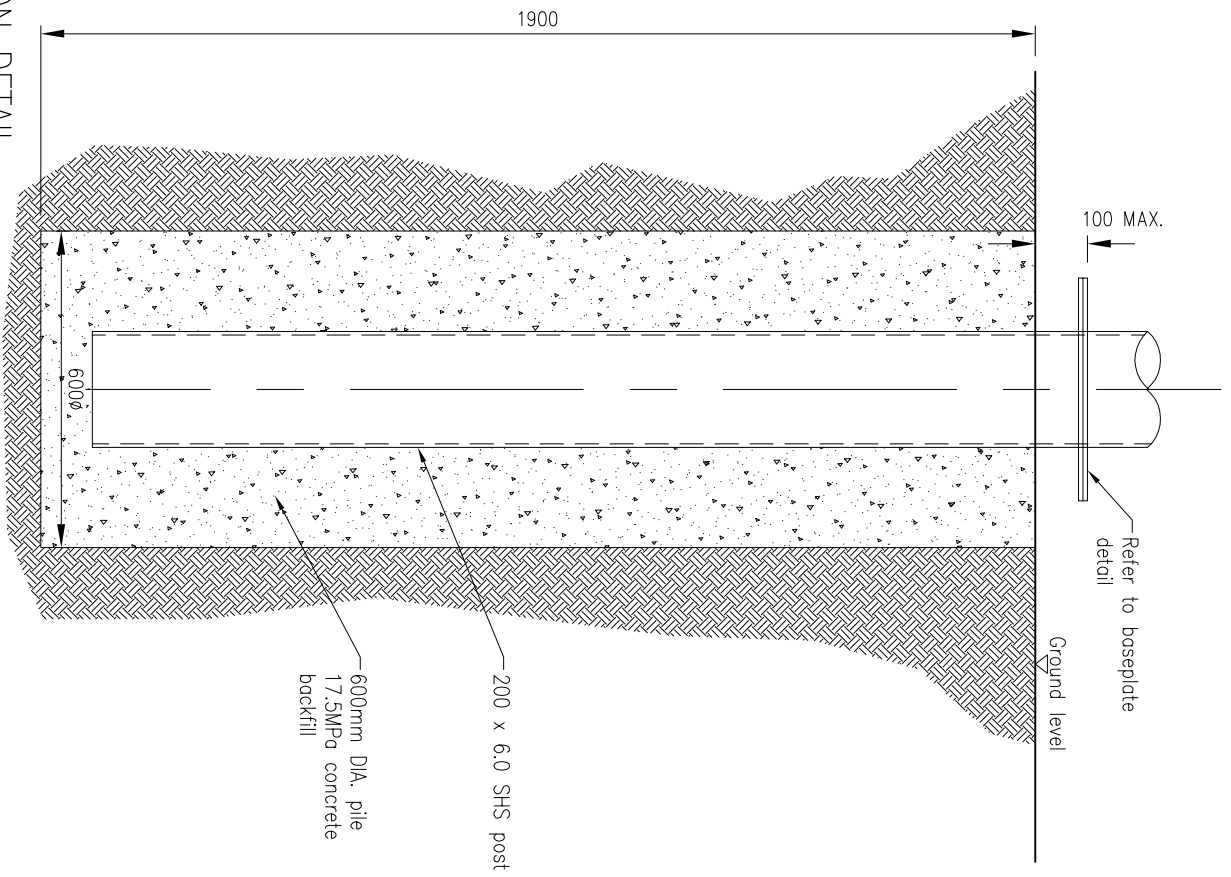


- DESIGN PARAMETERS**
- a) Wind pressure = $.96 \times 1.5 = 1.44\text{KPa}$
 - b) Base shear = 12KN
 - c) Base overturning moment ie. OTM = 48.6
 - d) Base righting moment KNm RM = 1.5 OTM

- SPECIFICATION**
- 1. All hollow sections Grade 350
 - 2. All concrete ($f_{c'} = 17.5\text{MPa}$ in pile)
 - 3. All bolts 8.8/s (snug tight)
 - 4. All welding fvar (fillet weld all round)
 - 5. TC (top cover) CHS (Circular Hollow Section)
 - BC (bottom cover) fms (Flat Mild Steel)
 - BF (both faces) SHS (Square Hollow Section)
 - 6. All reinforcement Grade 500MPa

NOTE: Dimensions of the signs are typically smaller than that shown. Pole widths are expected to range between 150mm \varnothing – 200mm \varnothing

POLE FOUNDATION DETAIL



PREPARED BY:

**ADVANCE DIRECTION SIGNS
TYPE 2**

SCALE:	NTS
DRAWN:	GMW
ISSUE DATE:	11/2008
APPROVED:	
PLAN No.	2008/1018
	Issue A