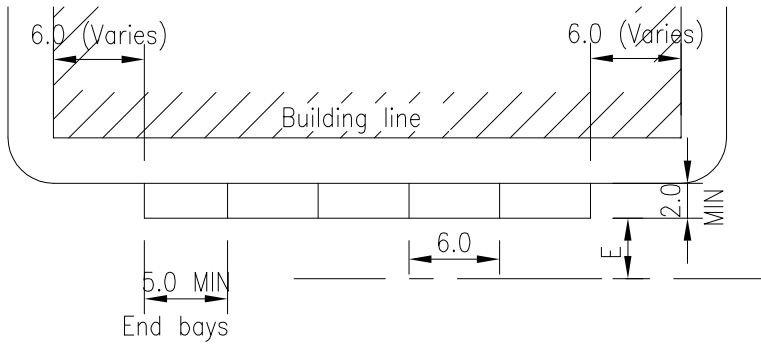
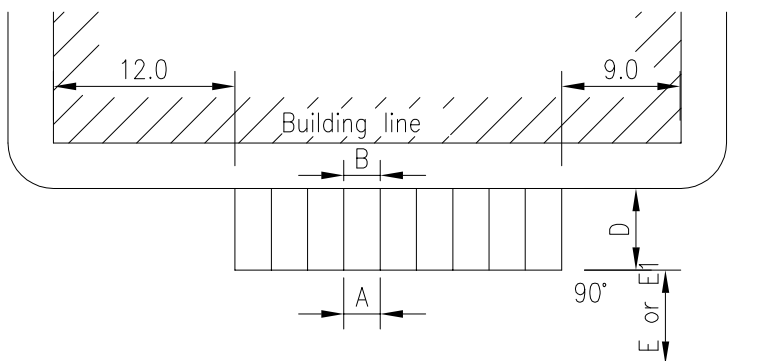
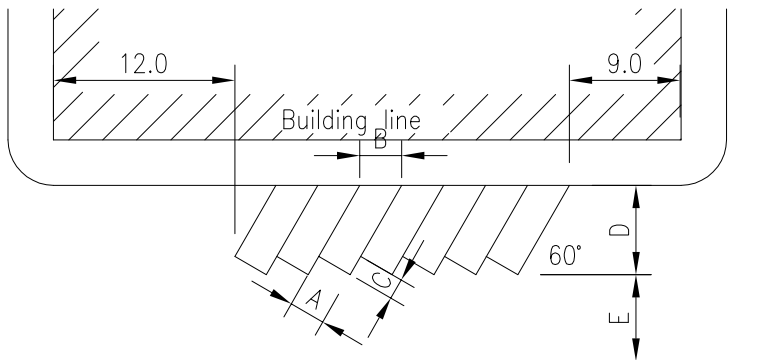
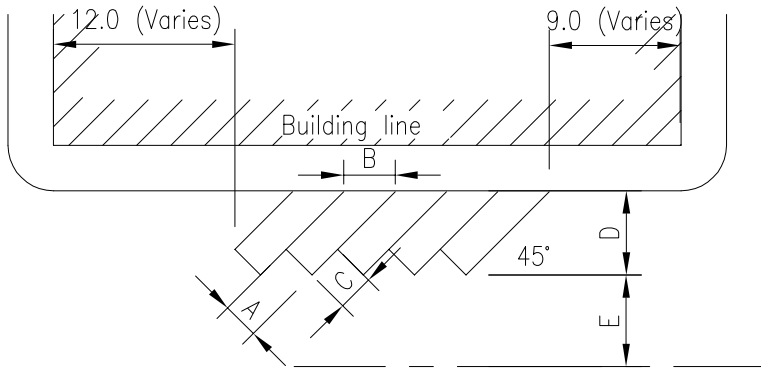


NOTES

- When vehicles overhang the end of the bay (eg over the footpath) D may be reduced to Dx.
- Tail-in parking bays slope in opposite direction, but are not preferred and are not acceptable for public spaces.
- E = min aisle width for regular users.
- E1 = min width for casual users.
- NZ Building Code DI/AS1 also provides Acceptable Solution.
- Minimum clear footpath width of 1.2m must be provided in addition to 0.8m vehicle overhangs. Desirable footpath width is 1.8m (min).



E = 3.5 one way aisle
= 5.5 two way aisle



A	B	C	D	Dx	E	E1
2.4	3.4	2.4	5.5	5.0	4.0	
2.5	3.5	2.5	5.6	5.1	3.8	
2.6	3.7	2.6	5.65	5.15	3.5	
2.7	3.8	2.7	5.75	5.25	3.5	

A	B	C	D	Dx	E	E1
2.4	2.75	1.4	5.9	5.25	4.8	
2.5	2.9	1.45	5.95	5.3	4.5	
2.6	3.0	1.5	5.95	5.35	4.3	
2.7	3.1	1.55	6.0	5.4	4.0	

A	B	C	D	Dx	E	E1
2.4	2.4	-	5.4	5.0	7.5	
2.5	2.5	-	5.4	5.0	7.0	8.0
2.6	2.6	-	5.4	5.0	6.6	7.0
2.7	2.7	-	5.4	5.0	6.2	6.0
3.6	3.6	-	5.4	5.0	8.0	8.0

Disability park*

*Where more than one disability carpark is provided, this dimension can be reduced in accordance with the NZ Building Code & AS/NZS 4121.

PREPARED BY:



AUCKLAND CITY
Transport

**ON STREET
CAR PARKING AREAS**

SCALE : NTS

DRAWN : JZW

ISSUE DATE : 11/2008

APPROVED :

PLAN No. ISSUE A

2008/0709